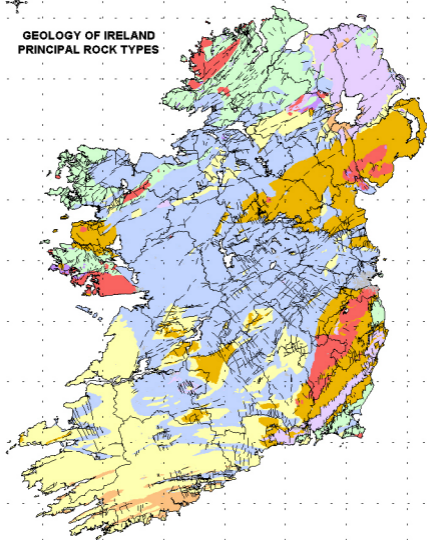


GEOLOGY OF IRELAND PRINCIPAL ROCK TYPES



Geology of Ireland

Main Rock Types

- Limestones
- Mixed Sediments
- Greywackes, Slates etc.
- Sandstones
- Metamorphics
- Granites
- Basal Intrusives
- Volcanics, Basalts etc



CSA Group Ltd.
7 Dundrum Business Park,
Windy Arbour,
DUBLIN 14, IRELAND.
Tel: (01) 296 4867 Fax: (01) 296 4876
www.csa.ie

PROJECT GEOTHERMAL ENERGY REVIEW OF IRELAND - Final Report	
MAP Geology of Ireland Principal Rock Types	
Scale 1:1,000,000	Scale No. 2004
Date 08-04-2004	Dwg. No.
Author ROSS/SLU/DOX	MAP 1A
Drawn by JOK	