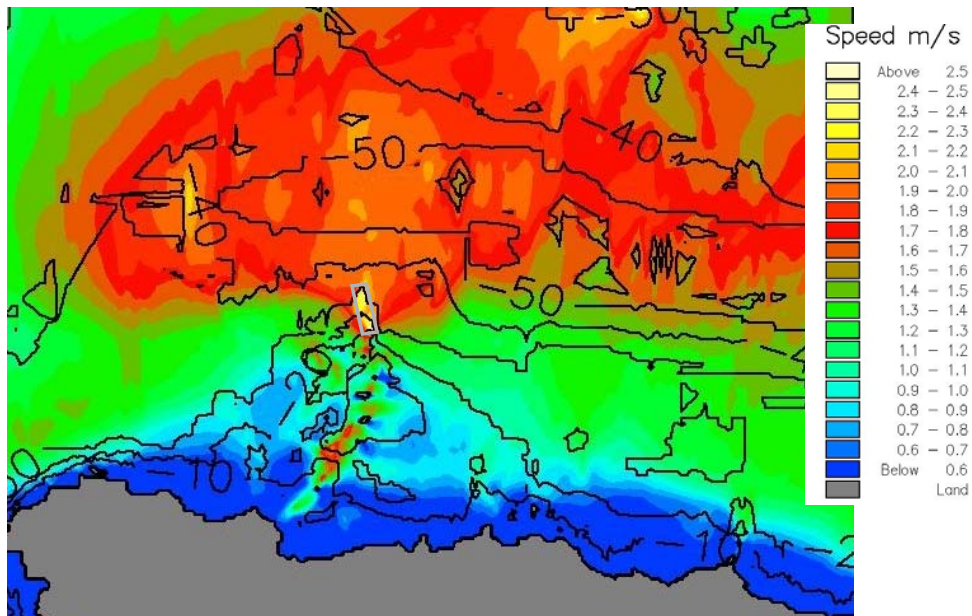
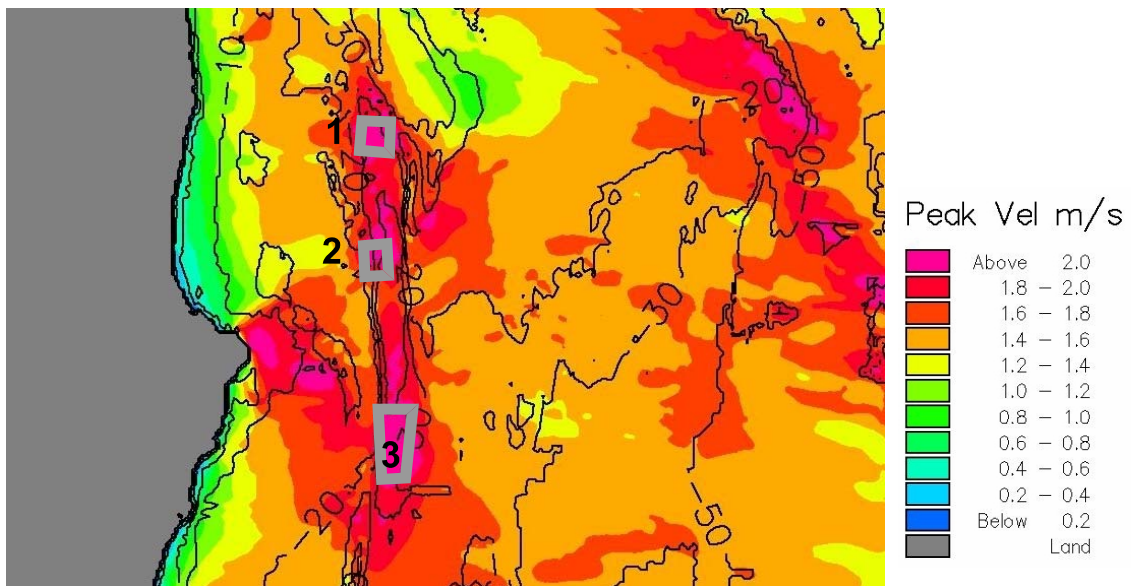


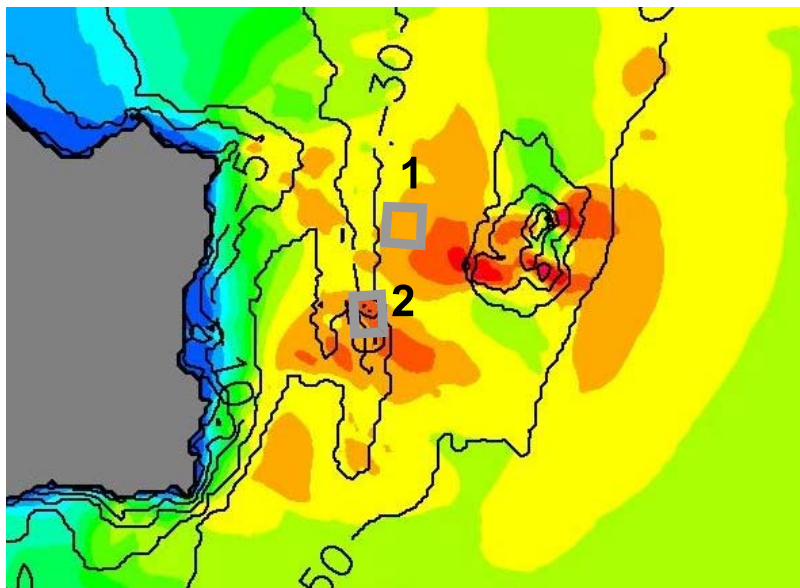
Turbine array locations and turbine layouts are given below for each of the sites where detailed modelling was carried out in order to determine the practicable, accessible and viable resource.



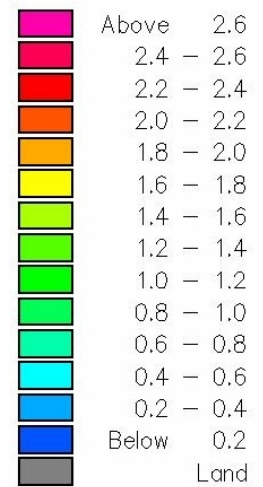
Site 1 Inishtrahull Sound



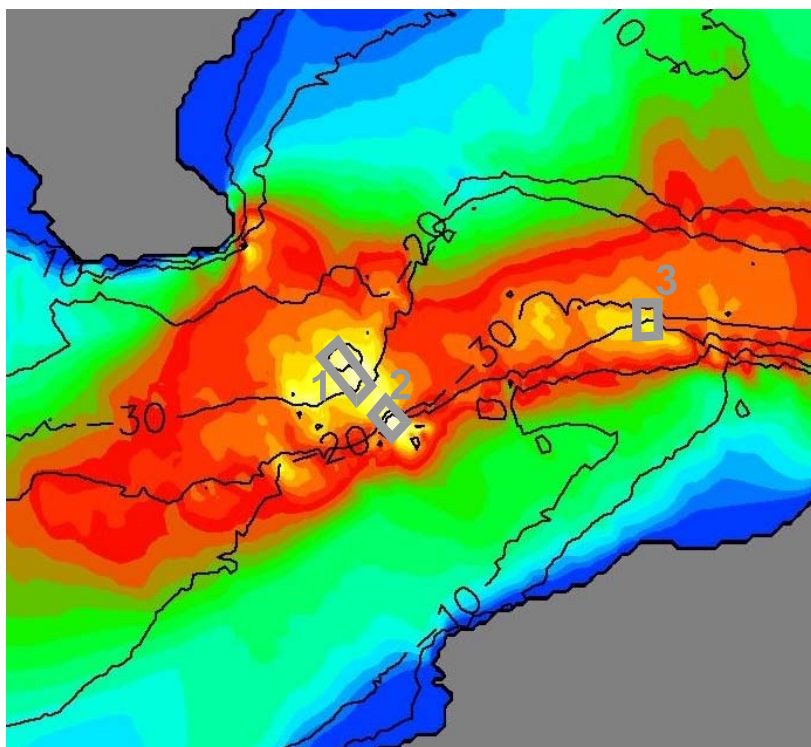
Site 6 Codling and Arklow Banks



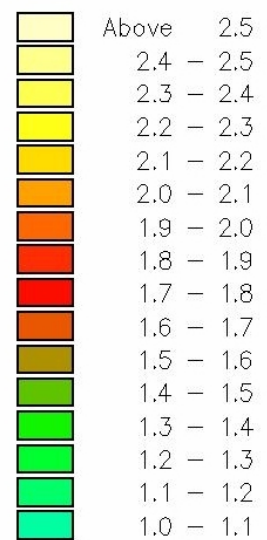
Peak Vel m/s



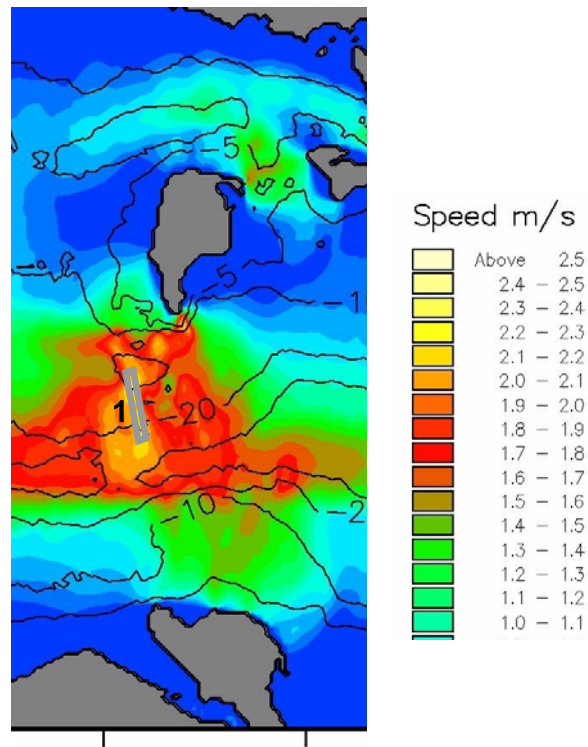
Site 7 Tuskar Rock and Carnsore Point



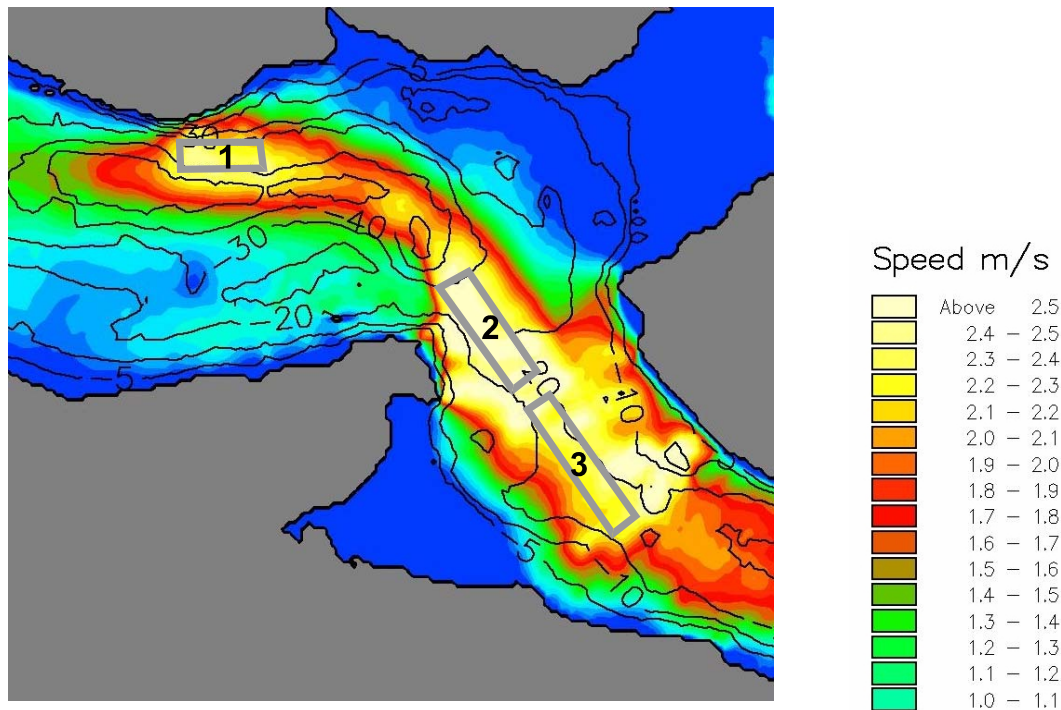
Speed m/s



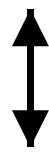
Site 10 Shannon Estuary-1



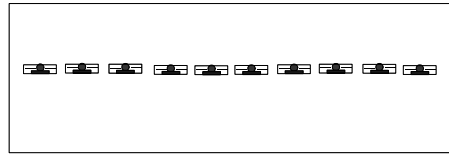
Site 10 Shannon Estuary-2



Site 10 Shannon Estuary-3



Flow directions



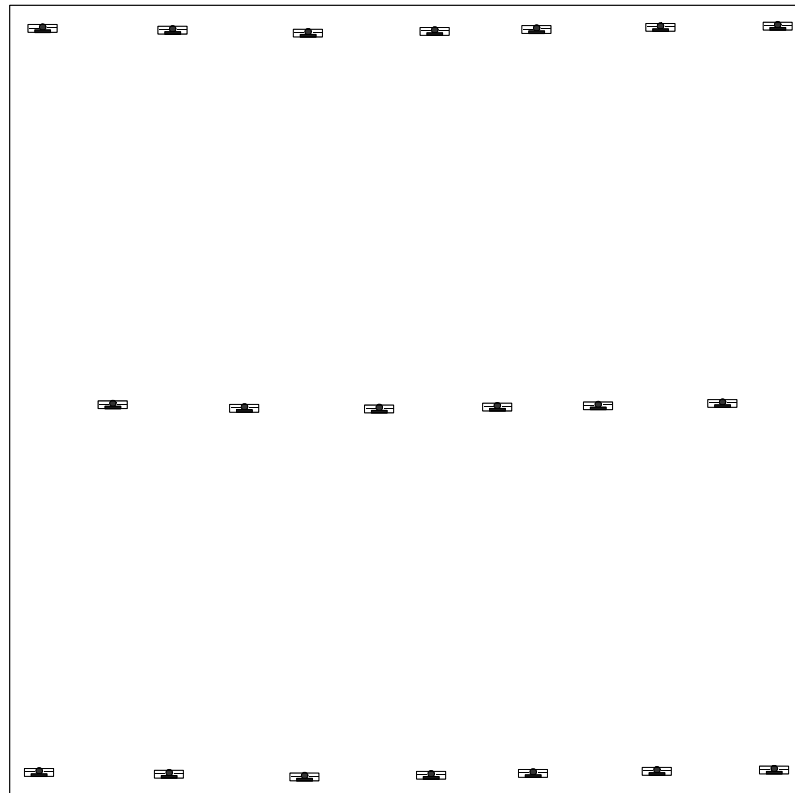
Inishtrahull
(0.75 x 0.25km)

Site 1 Inishtrahull Sound

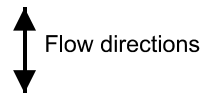


Flow directions

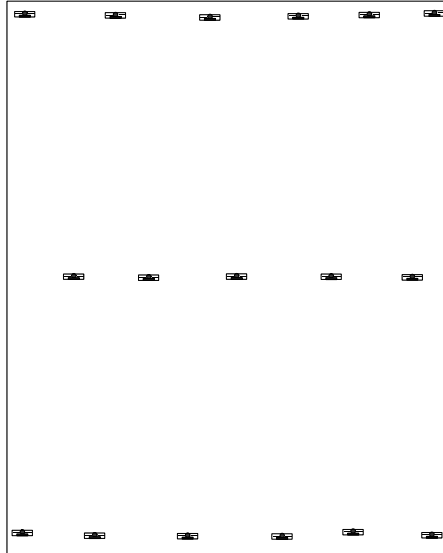
Wicklow - 1
(1.5 x 1.5km)



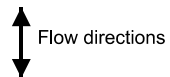
Site 6A Codling and Arklow Banks



Wicklow - 2
(1.2 x 1.5km)

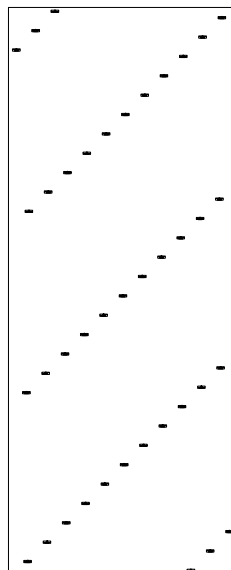


Site 6B Codling and Arklow Banks



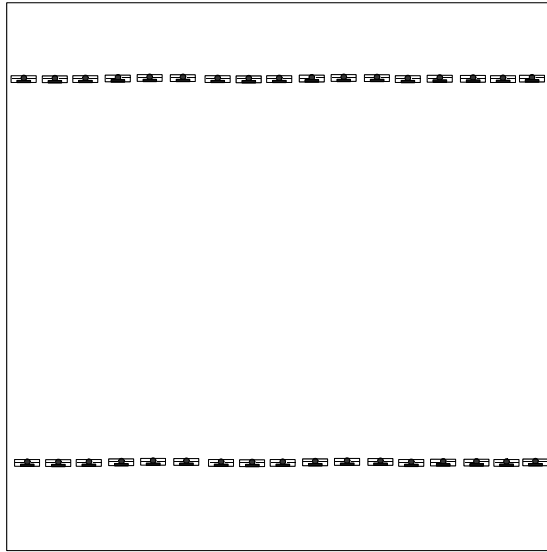
Wicklow - 3
(1.5 x 3.5km)

Note shown at 1/2 scale of other layouts



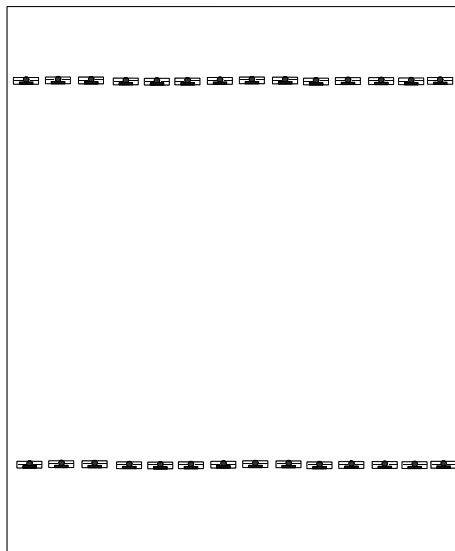
Site 6C Codling and Arklow Banks

Wexford - 1
(1.2 x 1.2km)

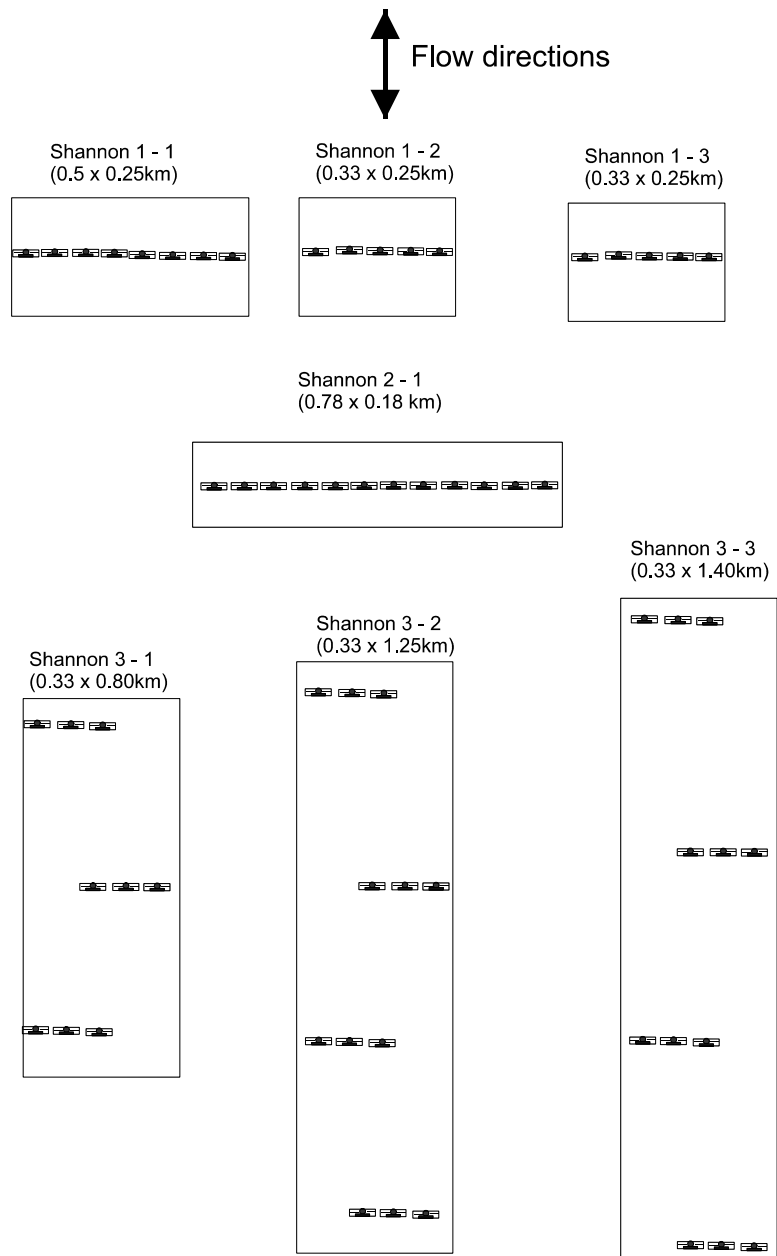


↑
↓
Flow directions

Wexford - 2
(1.2 x 1.0km)



Site 7 Tuskar Rock and Carnsore Point



Site 10 Shannon Estuary
