

Dublin – 24 January 2007

EPBD BUILDINGS PLATFORM

**The EPBD Buildings Platform :
Your information source on EPBD
and related European Activities**

P. Wouters
On behalf of Daily Management Team of EPBD Buildings Platform
(P. Wouters – D. van Dijk – D. Langendries – M. Spiekman)

**European Legislation :
Requirements at different levels**

EPBD BUILDINGS PLATFORM

- **1989 - Construction Products Directive (CPD)**
 - MS obliged to harmonise procedures for product characterisation
- **2003 - Energy Performance of Buildings Directive (EPBD)**
 - MS obliged to implement methods and requirements for energy performance of buildings + certification + inspection
 - No minimum obligations for MS in terms of energy efficiency
- **2005 - Directive on Energy Services & End Use Efficiency (ESD)**
 - Indicative energy saving targets (of 1%) for MS
- **2006 – Action Plan on Energy Efficiency**


EPBD BUILDINGS PLATFORM

European Directives?

- A directive is issued by the European Commission and approved by European Parliament and Council of Ministers
- It contain instructions to the Governments of **all Member States** which must comply with them.
- National laws must be adapted or produced in line with the requirements of the Directive and this before the specified deadline.



**Energy Performance of Buildings Directive
EPBD** → **Implementation :
Responsibility of MS**



25 Member States

EPBD BUILDINGS PLATFORM

Article 1 : Objective

...

This Directive lays down requirements as regards:

1. the general framework for a **methodology of calculation** of the integrated energy performance of buildings;
2. the application of **minimum requirements** on the energy performance of **new buildings**;
3. the application of **minimum requirements** on the energy performance of large existing buildings that are subject to major **renovation**;
4. **energy certification** of buildings; and
5. regular **inspection of boilers and of air-conditioning** systems in buildings and in addition an assessment of the heating installation in which the boilers are more than 15 years old.

EPBD BUILDINGS PLATFORM

**Related activities – support
measures**

- **Technical support :**
 - Mandate to CEN
 - EPBD Concerted Action
 - SAVE projects
- **Dissemination support**
 - **EPBD Buildings Platform**

What is the EPBD Buildings Platform?

EPBD BUILDINGS PLATFORM

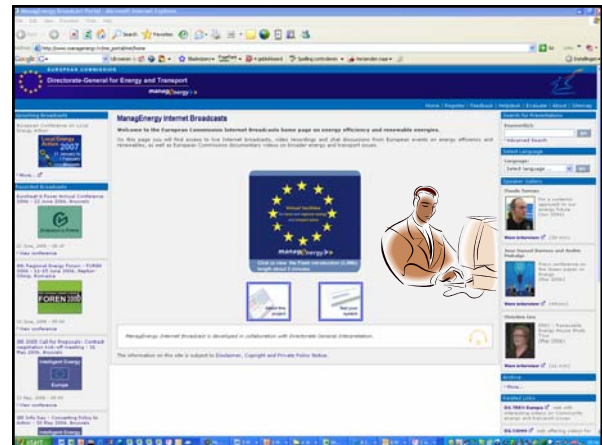
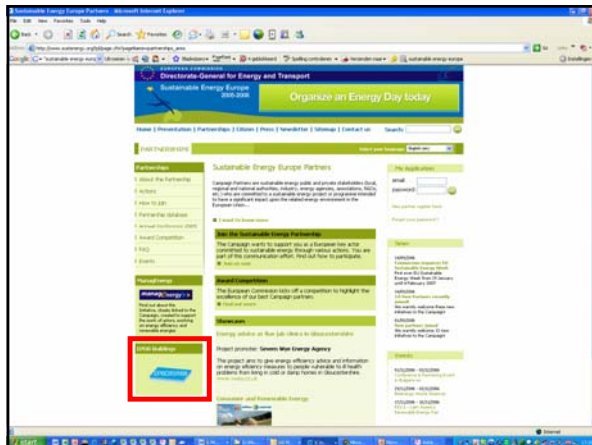
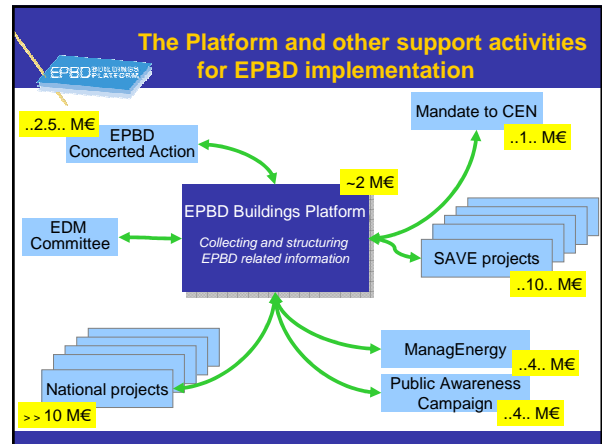
The EPBD Buildings Platform is an information service for helping the implementation of the Buildings' Directive

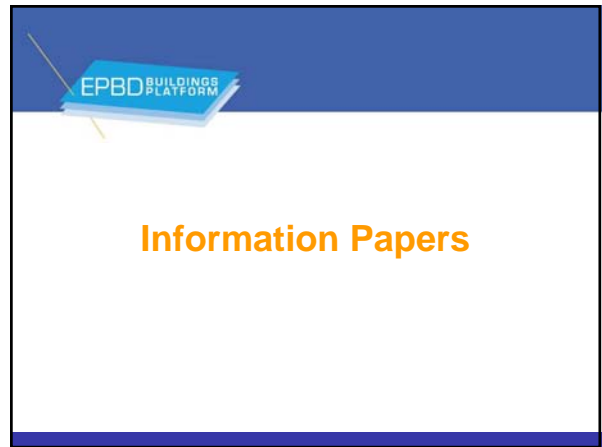
The Platform has been launched by the European Commission in the frame of Intelligent Energy – Europe Programme

Start: Jan. 2006
 Duration: 2.5 years
 Contractor: INIVE EEIG



The Buildings Platform acts as the official EC information channel for EPBD related issues



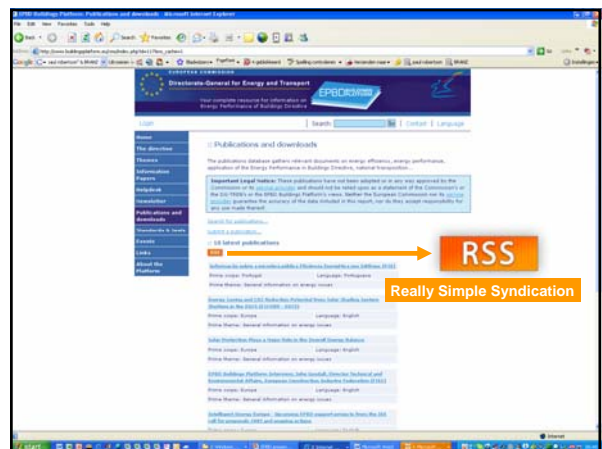
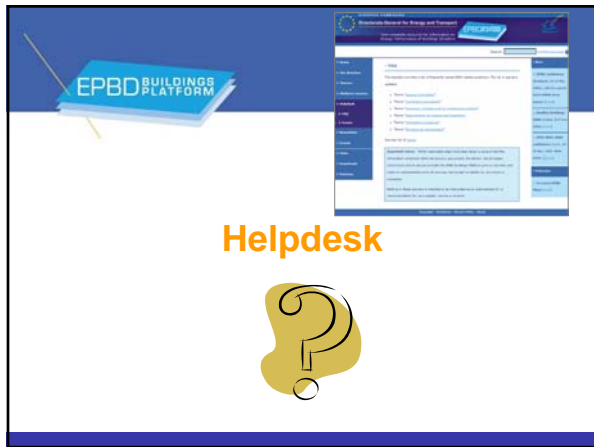
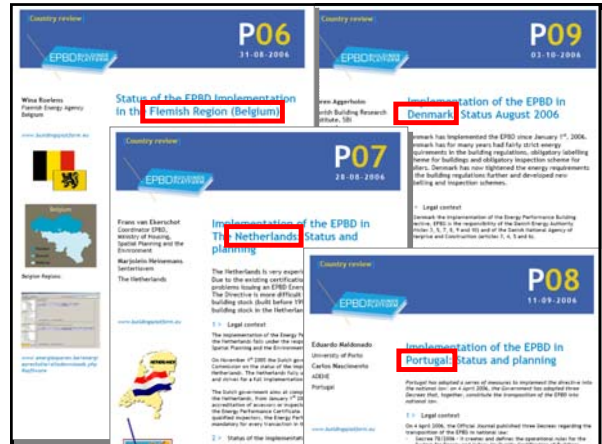


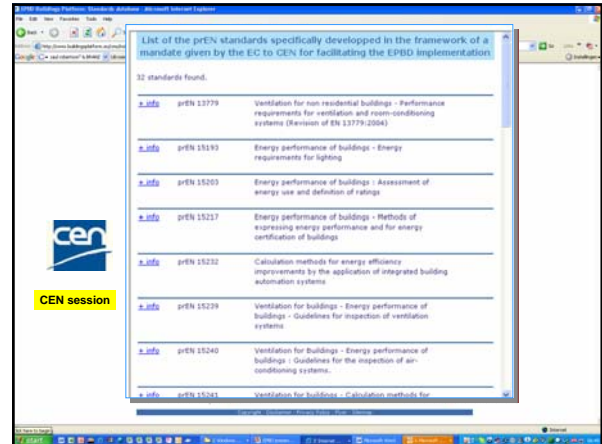
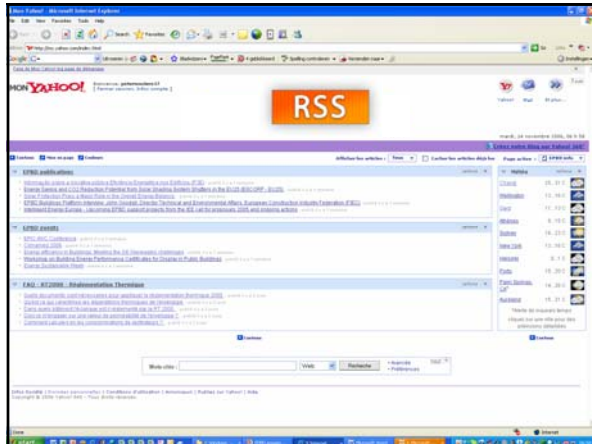
Objectives of the information papers

Regular information on status of work, e.g. on :

- Country reports on national implementation
- CEN standardisation
- SAVE projects and other EU projects
- Information on "horizontal themes"
 - Procedures
 - Inspection of boilers and air conditioning
 - Training
 - Certification
 - Requirements
- Outcome of major EPBD related conferences

About 60...70 papers to be published





Conclusions

- Impact of EPBD is very substantial
 - Regarding activity level by Member States
 - Regarding (future) impact on building performances
- Many countries don't meet the agreed timing, but very substantial progress in most countries
- Important standardisation activities
- During this conference 8 EPBD related sessions