

Would you like more Information about the Monitor?

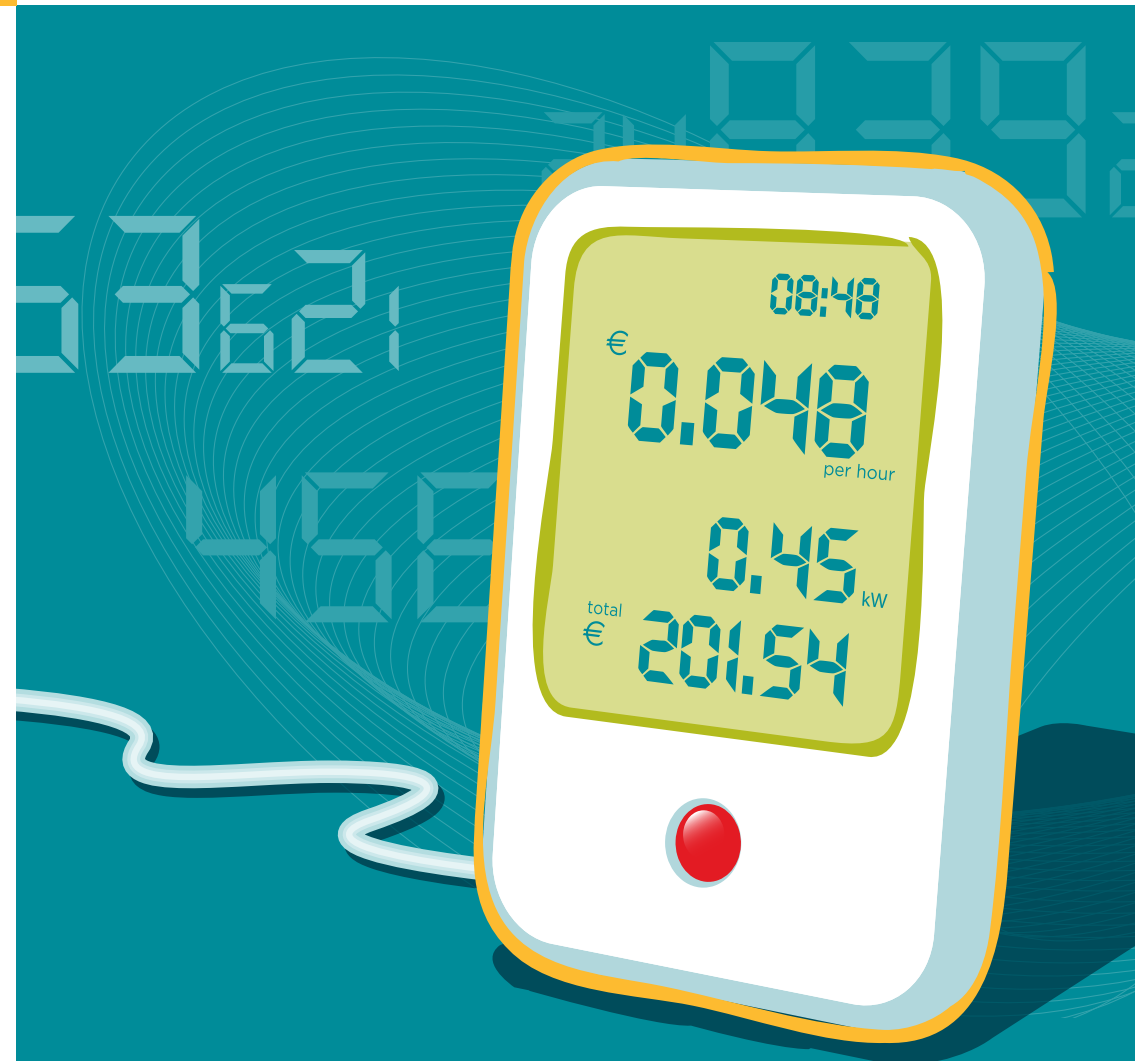
If you would like more information try one of the following:

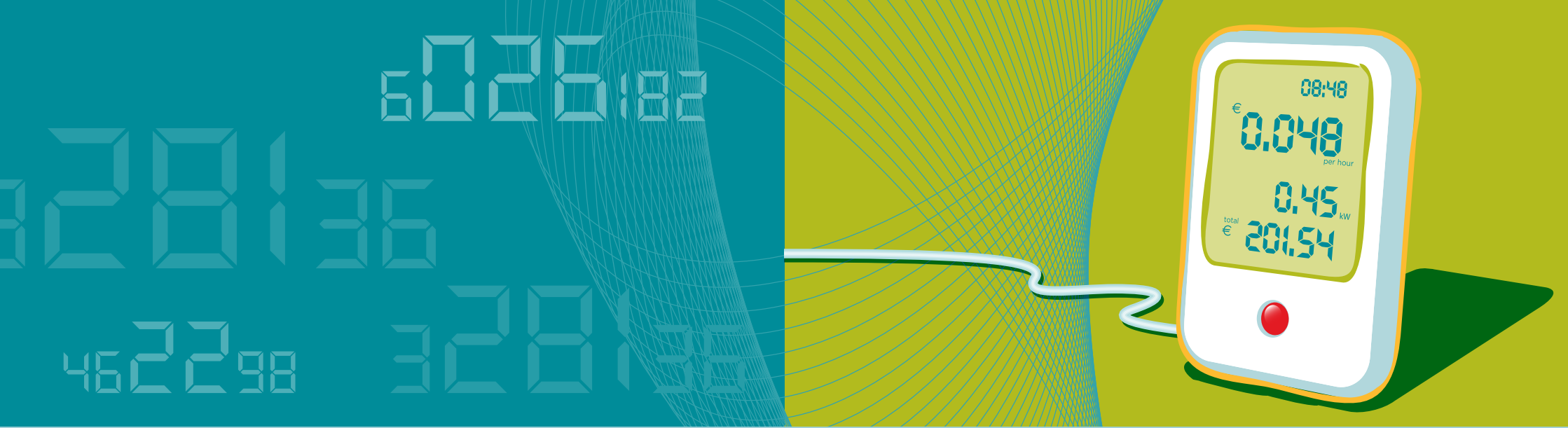
- Read the instruction booklet provided with your monitor.
- Call SEI on 042 9391518
- Go to website for your particular home display monitor

088 7193

Your Guide to Electricity Display Monitors

Electricity Monitors Explained





What is an Electricity Display Monitor?

It is a display monitor that gives you a reading of how much electricity you are using.

By tracking the electricity used by various appliances you can identify how to save money simply by using these appliances less or turning them off.

How does it Work?

Display monitors tell you how much electricity you are using, how much this is costing you and the greenhouse gas (CO₂) emissions associated with your electricity use.

You can use your display monitor to understand which appliances use most electricity. Compare different appliances' energy use as they are switched on or off. For example, if you switch lights, the kettle or electronic equipment ON or OFF, you can see the change this has made to your electricity use. Note how some appliances use much more energy than others.

Can I Track Improvements?

You can use the display monitor to check through the previous days, weeks and months of electricity use. This can help you compare your daily habits and to track the savings that you are making.

How Can I Save Money?

The display monitor cannot save you money on its own but it can help you change your habits. You can use it to make sure lights or appliances aren't left on unnecessarily. Over time you will get an understanding of your normal usage and will be alerted when electricity is being wasted. For more advice on how to save electricity visit www.sei.ie

Will the Display Monitor calculate my electricity bill?

No, the display monitor is not a replacement for your electricity meter. The purpose of the display monitor is to make you more aware of how much electricity you are using and to provide you with information to allow you reduce this use by switching appliances off or using them more efficiently.