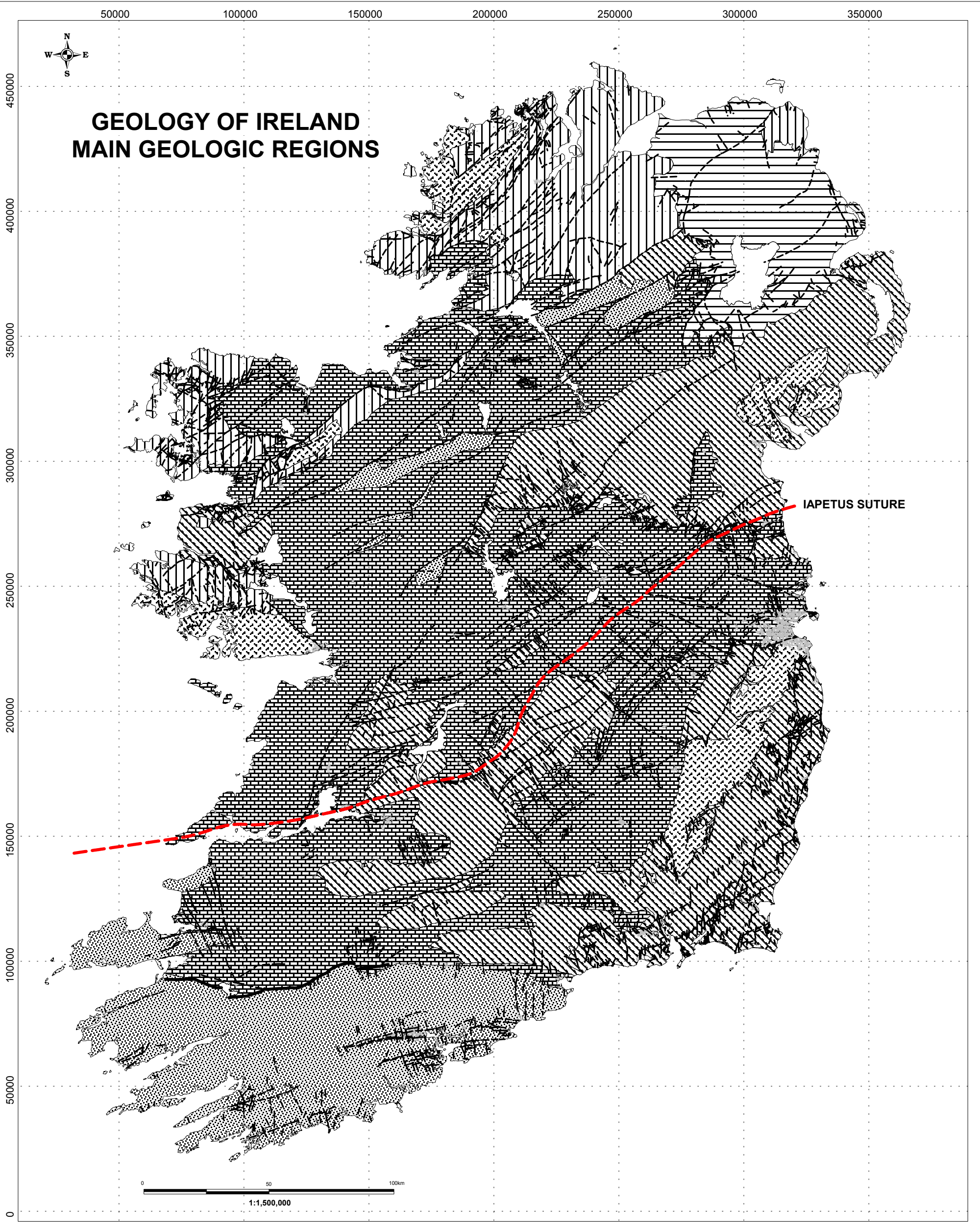



# GEOLOGY OF IRELAND MAIN GEOLOGIC REGIONS



### GEOLOGICAL PROVINCES

- Granitic Plutons
- Permo-Tertiary
- Carboniferous Basins
- Devonian
- Lower Palaeozoics
- Dalradian

|   |                |          |      |
|---|----------------|----------|------|
| CLIENT:  |                |          |      |
| PROJECT: <b>GEOHERMAL ENERGY REVIEW OF IRELAND - Final Report</b>                             |                |          |      |
| TITLE: <b>Geology of Ireland Main Geologic Regions</b>  |                |          |      |
| Scale   | 1:1,500,000    | Job No.  | 3085 |
| Date  | 09-06-2004     | Dwg. No. |      |
| Author  | RG/ES/GLIJ/JGK | MAP      | 1B   |
| Drawn by  | JGK            |          |      |



CSA Group Ltd.  
7 Dundrum Business Park,  
Windy Arbour,  
DUBLIN 14, IRELAND.  
Tel: (01) 2964667 Fax: (01) 2964676  
www.csa.ie