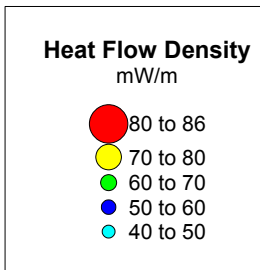



Heat Flow Density Data Modelled Using Natural Neighbour Interpolation.  
Data from Brock and Barton (1984, 1989)  
24 Datapoints  
Region Contour Interval 2mW/m (milliwatt/metre)

**CSA** CSA Group Ltd.  
7 Dundrum Business Park,  
Windy Arbour,  
DUBLIN 14, IRELAND.  
Tel: (01) 2964667 Fax: (01) 2964676  
www.csa.ie



CLIENT: 			
PROJECT: <b>GEOHERMAL ENERGY REVIEW OF IRELAND - Final Report</b>			
TITLE: <b>Heat Flow Density in Rocks from 0 to 100m</b>			
Scale	1:1,500,000	Job No.	3085
Date	09-06-2004	Dwg. No.	
Author	RG/ES/GLIJ/JGK	MAP	<b>21B</b>
Drawn by	JGK		