

An SEAI Report prepared for the Department of Communications, Climate Action & Environment





Contents

1. Executive Summary	2
2. Background and Context	4
2.1 Policy and Legislative Requirements	4
2.2 The Monitoring and Reporting (M&R) Process	5
2.3 Water Services	5
2.4 Analysis of Reporting by Public Bodies	6
3. Analysis of Primary Energy Consumption and Energy Spend	7
3.1 Total Energy Consumption	7
3.2 Total Energy Spend	7
3.3 Total Energy Consumption by Fuel Type	8
3.4 Electricity Consumption	9
3.5 Natural Gas Consumption	10
3.6 Main Energy Consumers	10
4. Analysis of Energy Savings Achieved and Performance	11
4.1 Total Public Sector Primary Energy Savings (GWh) and Performance	11
4.2 Analysis of Total and Cumulative Public Sector Energy Savings (€)	13
4.3 Sub-sector Primary Energy Savings (GWh)	13
Making Progress	14
5. Towards 2020	16
5.1 Sub-sectoral Performance	16
5.2 Departmental Groups	18
5.3 Performance of Public Bodies	19
Appendix 1 – Reporting Methodology	42
Appendix 2 – Glossary	44

1. Executive Summary

This is the fourth annual report on the energy efficiency performance of public bodies in Ireland. It is set in the context of Ireland's EU and national commitments and wider climate change goals, whereby a target of 33% energy efficiency improvement is to be achieved by all Irish public bodies by 2020.

Energy efficiency continues to be a national imperative with a crucial role to play in Ireland meeting its national and international objectives, and achieving its climate change reduction goals. National energy efficiency efforts are also driven by the need for improved security of energy supply and to deal with fluctuating energy costs. The 2015 energy white paper, *Ireland's Transition to a Low Carbon Energy Future*, sets out the overall national policy context and emphasises how energy efficiency will be at the centre of a transition to a clean, low carbon energy system by 2050. The strategic importance of public sector energy efficiency is underlined in Ireland's fourth *National Energy Efficiency Action Plan* (April 2017) and in the first *National Mitigation Plan* (July 2017). It is also central to the Government's first *Public Sector Energy Efficiency Strategy* – published in January 2017. This report provides the evidence base which underpins that strategy.

Public bodies are required to report annual energy efficiency data to the Sustainable Energy Authority of Ireland (SEAI) which manages the reporting process on behalf of the Department of Communications, Climate Action and Environment (DCCAE)¹. The definition of 'public bodies' in Ireland is broad and includes the civil service, local authorities, non-commercial state bodies/agencies, commercial state bodies and organisations in the health, justice, defence and education sectors.

Approximately 97% of all public bodies are now using the online national energy monitoring and reporting (M&R) system established by SEAI and DCCAE, in addition to 58% of all schools. The monitoring and reporting system provides an important record of how the public sector performed in 2016.

For 2016 there has been a further improvement in the numbers of organisations reporting. However, the data for 2016 suggests that a **progress plateau appears to have been reached** in the period 2015-2016, at around 20% improvement in efficiency. The detailed data in this report for 2016 cannot, however, be compared on a like for like basis to the data for 2015 as the overall number of public bodies and schools reporting changes from year to year.

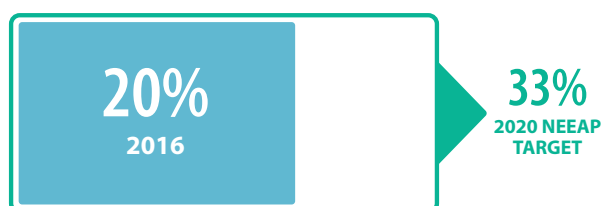
- For 2016, 346 public bodies were requested to report data to SEAI, of which 336² submitted complete reports by the reporting deadline.
- In addition, 3,735 standalone schools were requested to report data, of which 2,171³ submitted complete reports.

This report comprises an analysis of the data submitted by these organisations on annual energy consumption, energy savings achieved and energy efficiency performance in 2016 against 2020 targets.

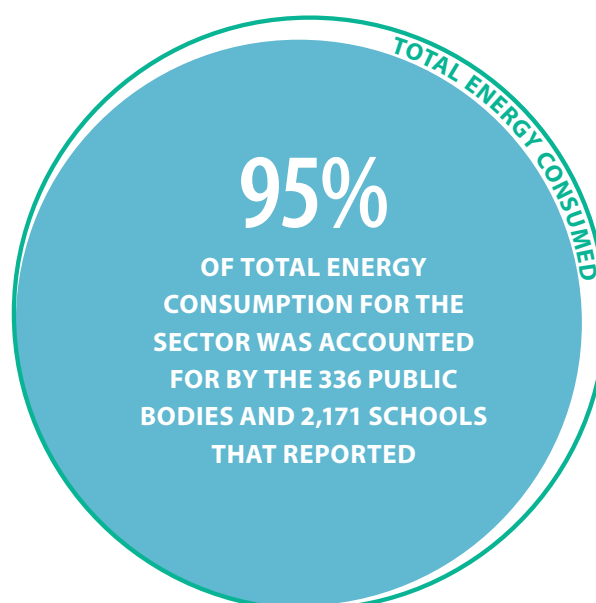
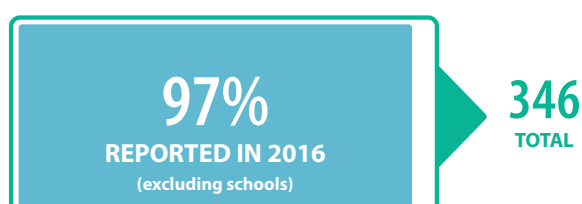
Efficiency gains have been achieved through implementation of thousands of diverse projects, ranging from structured energy management, building and facility upgrades, retrofits, changes in transportation, better energy procurement and through behavioural change in organisations.

Current Position

ENERGY EFFICIENCY IMPROVEMENT



PUBLIC BODY REPORTING RATE



¹ Reporting by public bodies in Ireland is required under Regulation 5(4) of SI 426 2014. The number of public bodies that are required to report may change each year due to organisational changes in line with government policy and legislation.

² 338 public bodies attempted to submit reports but data for two of these was incomplete and is not included in this report.

³ An additional 208 schools attempted to submit reports but their data was incomplete and is not included in this report.

Key findings from the analysis of the data reported by 336 public bodies and 2,171 schools for 2016:

- Their combined total primary energy consumption was 9,375 GWh and their total energy spend was €536 million.
- This is estimated to represent 95% of the energy consumption of the sector.
- Annual primary energy savings of 2,336 GWh were achieved, which is equivalent to 520,000 tonnes of CO₂ savings.
- These savings amount to a 20% improvement on business as usual, representing €133 million in cost savings for the sector in 2016.
- The cumulative avoided CO₂ emissions since their baselines amount to 2,683,000 tonnes, while the value of the cumulative energy savings over the same period is €737 million.

While the level of reporting by public sector organisations is very strong in terms of compliance, the aim is that all public bodies' consumption, including that of all schools, will be reported in future years. The compliance rate in 2016 for public bodies was 97%, excluding schools. The compliance rate for schools of 58% is significantly higher than that of last year (48%). It is considered a good response given the technical complexity of the data requirements.

Overall, based on the data reported, the energy efficiency performance achieved for 2016 is good, at 20% improvement. But the plateau now observed underlines the need for intensification of effort – which the new *Public Sector Energy Efficiency Strategy* is designed to provide, from 2017. The annual M&R process is an enabling tool, providing public bodies, their energy performance officers and key stakeholders with the performance information that enables strategic decision-making to facilitate the achievement of the 33% efficiency target.

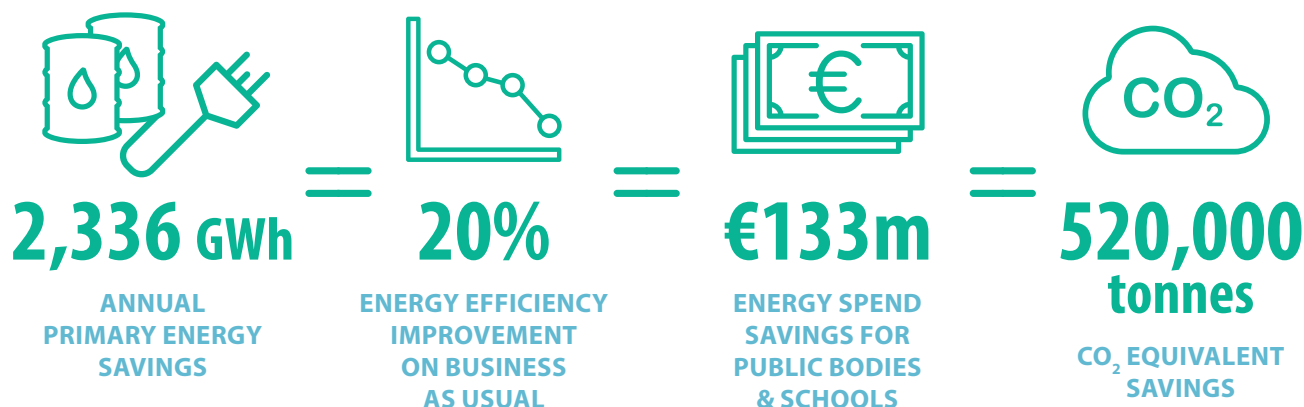
In 2016, while there were improvements made in the level of reporting, the total energy efficiencies achieved had plateaued at around 20%

In 2016, public bodies avoided €133 million worth of energy consumption

Key Findings



FOR 2016, THE SAVINGS ACHIEVED WERE:



2. Background and Context

2.1 Policy and Legislative Requirements

The *Energy Efficiency Directive (EED) (2012/27/EU)*⁴ sets out the policy roadmap for the period to 2020 and brings forward legally binding measures to intensify Member States' efforts to use energy more efficiently at all stages of the energy supply chain. The EU 2030 Climate and Energy Framework sets out headline targets for the EU for 2030 of at least a 40% reduction in greenhouse gas emissions (from 1990 levels) and increases in energy efficiency and renewable energy to 27%.

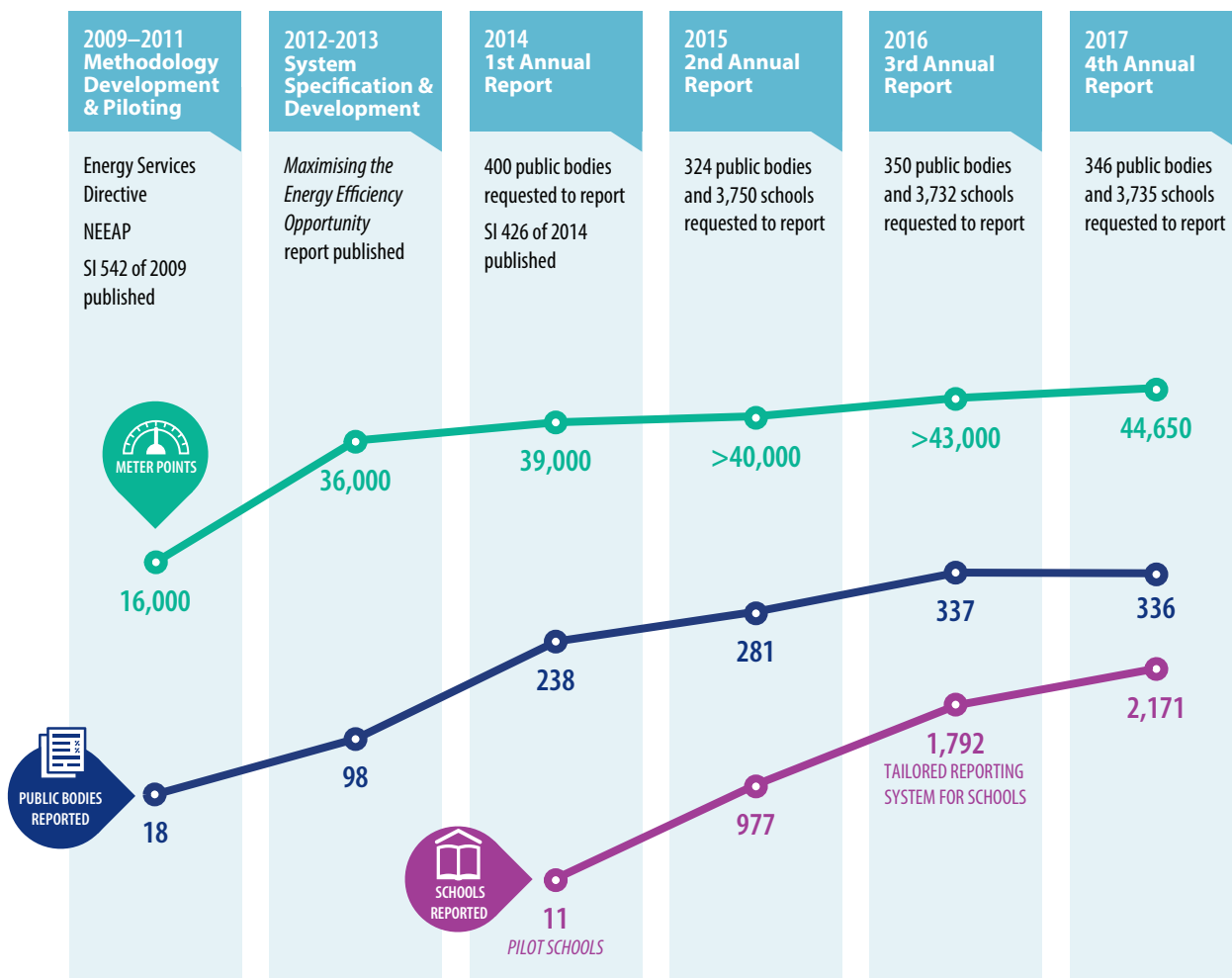
In Ireland, the National Energy Efficiency Action Plan (NEEAP) sets out several obligations on public bodies to lead the way in relation to energy efficiency, stating *'The public sector will improve its energy efficiency by 33% and will be seen to lead by example — showing all sectors what is possible through strong, committed action.'* The *Public Sector Energy Efficiency Strategy* –

approved by Government in December 2016 and published in January 2017 – puts in place a new governance structure, provides further guidance on energy management and enhanced support to help public bodies achieve this target. The strategy also highlights the important leadership role the public sector has on energy efficiency.

SEAI, on behalf of DCCAE, established the M&R system to enable public bodies and schools to track their energy efficiency performance towards the 2020 targets.

This M&R system is based on the groundwork put in place since 2009 by SEAI to enable the public sector to meet its energy efficiency reporting requirements. This is illustrated in Figure 1.

FIG. 1: ENABLING M&R BY PUBLIC BODIES



⁴ This has been transposed into Irish legislation under SI 426 of 2014 *European Union (Energy Efficiency) Regulations*.

2.2 The Monitoring and Reporting (M&R) Process

Since 2010, public bodies have been required by Irish statute to report on their energy usage and actions taken to reduce consumption. There are two key obligations for public bodies:

- Requirement - under the provisions of SI 426 of 2014 - to report energy management and performance data directly to SEAI each year in order to track progress towards the 2020 target.
- Requirement to publish an annual statement on energy performance. This statement must describe *'the actions it is taking, or has taken, to improve its energy efficiency and an assessment of the energy savings arising from those actions.'*

The reporting methodology is illustrated below in Figure 2. A more detailed description is in Appendix 1.

There are two key concepts applied:

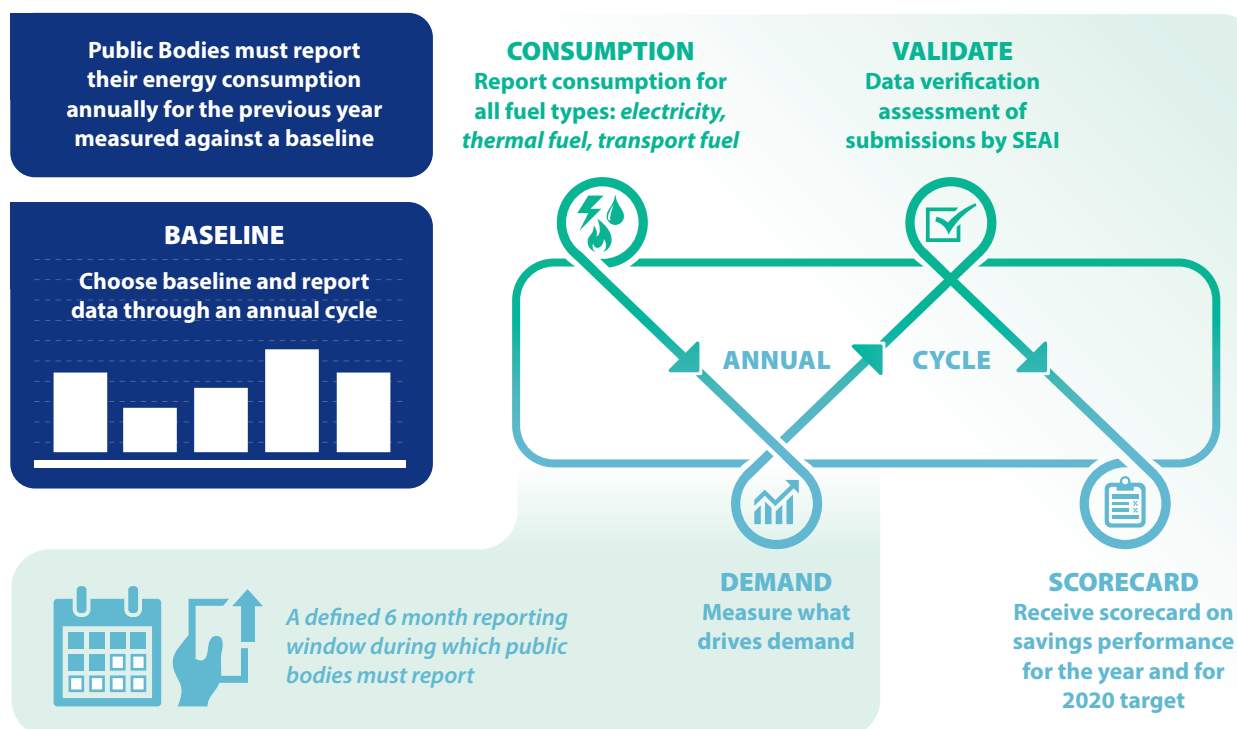
- Application of activity metrics so that fluctuations in an organisation's level of activity that have an impact on energy **consumption** are taken into account in determining performance, and
- Tracking energy performance and energy efficiency against a **baseline** so annual improvements can be assessed.

Energy efficiency improvements therefore can be assessed against a 'business as usual' scenario, and take into account organisational or infrastructural changes that impact on the energy requirements of the public body.

2.3 Water Services

Up to the end of 2013, local authorities were responsible for the provision of public water services, which accounted for approximately 40% of their combined energy consumption. The water services sector had made savings of 6% up to and including 2013. In January 2014, the water services assets transferred to Irish Water. In consultation with local authorities and Irish Water, SEAI developed an approach to track the energy performance of the sector before, during and after this transition. Data for local authorities and Irish Water is included within the same sub-sector in this report.

FIG. 2: HOW PUBLIC BODIES REPORT



2.4 Analysis of Reporting by Public Bodies

In Ireland the definition of 'public bodies' is broad and encompasses a wide range of organisations, including the civil service, local authorities, non-commercial state bodies/agencies, commercial state bodies and organisations in the health, justice, defence and education sectors.

In 2016 **346⁵ public bodies and 3,735 standalone schools** were requested to report data to SEAI through the 2016 reporting cycle⁶.

The public bodies and schools that were requested to report during the 2016 reporting cycle are broken down as follows:

- 346 public bodies, including 16 Education & Training Boards (ETBs), were requested to report data directly to SEAI using the reporting system. The facilities under the aegis of the ETBs, including 252 schools, were requested to report via their ETBs.
- Another 3,735 schools were requested to report directly as standalone entities.

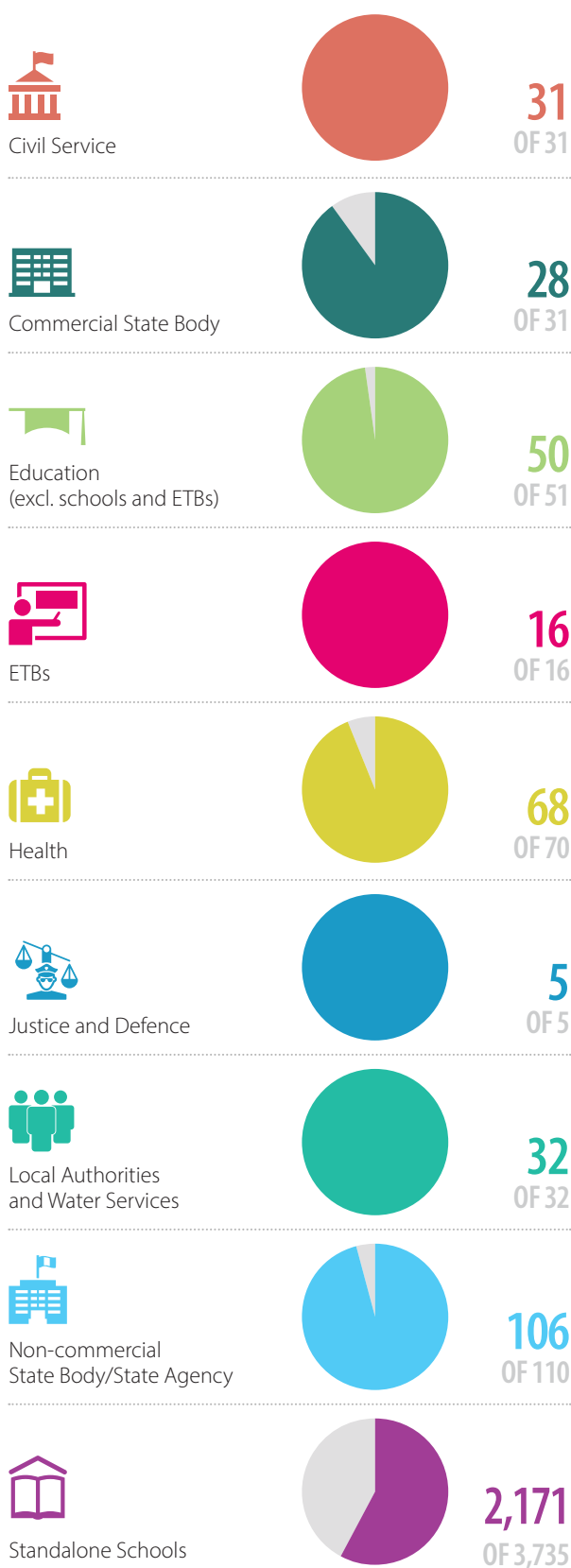
By the reporting deadline, 338⁷ public bodies and 2,379 standalone schools had made submissions to SEAI. Some of these submissions were not fully complete and are not taken into account in the analysis of the data presented in this report. The data presented in this report is an analysis of 336 complete submissions from public bodies and 2,171 from standalone schools.

The 336 complete submissions made by public bodies represents a compliance rate of 97%. SEAI estimates that the consumption of all of the organisations that reported represents over 95% of total public sector energy consumption.

Figure 3 shows the number of complete reports submitted from each sub-sector as a proportion of the total number of organisations in each sub-sector.

The consumption of the organisations that reported represents 95% of total public sector energy consumption

FIG. 3: BREAKDOWN OF SUBMISSIONS BY SUB-SECTOR



⁵ The number of public bodies that are required to report in Ireland may change each year due to organisational changes in line with government policy and legislation e.g. in 2015 the National Roads Authority and the Railway Procurement Agency merged to become Transport Infrastructure Ireland.

⁶ In addition, a further 3 public bodies and 14 schools were requested to report but were subsequently excused from reporting as standalone entities.

⁷ This figure includes 3rd level institutions and ETBs, but excludes standalone schools.

3. Analysis of Primary Energy Consumption and Energy Spend

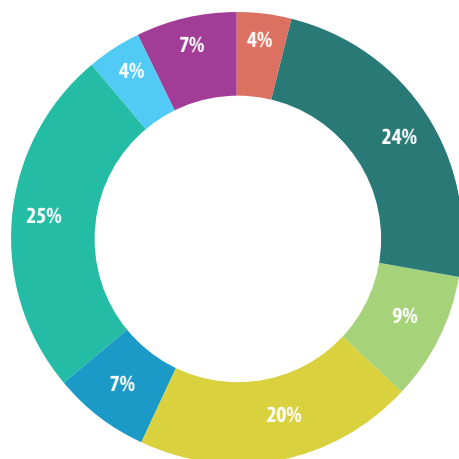
The data presented in section 3 is based on the complete reports submitted by 336 public bodies and 2,171 schools⁸.

3.1 Total Energy Consumption

The total primary energy consumption reported for 2016 was 9,375 GWh.

The sectoral breakdown of this total is shown in Figure 4.

FIG. 4: BREAKDOWN OF TOTAL ENERGY CONSUMPTION BY SUB-SECTOR (GWh)



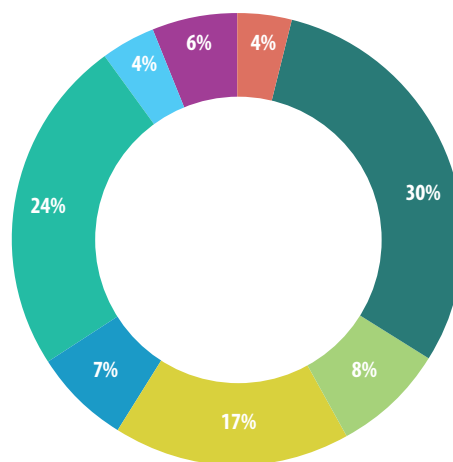
	GWh
Civil Service	414
Commercial State Body	2,255
Education (excl. Schools & ETBs)	863
Health	1,848
Justice & Defence	606
Local Authorities & Water Services	2,318
Non-commercial State Body / State Agency	411
Schools & ETBs	660
Total	9,375

3.2 Total Energy Spend

In 2016 the total public sector energy spend was €536 million.

The sectoral breakdown of this total spend is shown in Figure 5.

FIG. 5: SECTORAL BREAKDOWN OF TOTAL ENERGY SPEND



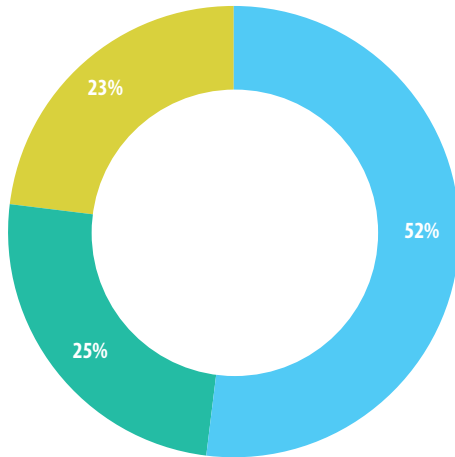
	€M
Civil Service	22
Commercial State Body	162
Education (excl. Schools & ETBs)	40
Health	90
Justice & Defence	38
Local Authorities & Water Services	129
Non-commercial State Body / State Agency	23
Schools & ETBs	33
Total	536

⁸ All of the values presented in this report for energy (GWh), expenditure (€ millions) and CO₂ emissions (tonnes CO₂) have been rounded. There are minor rounding differences in some of the tabular data.

3.3 Total Energy Consumption by Fuel Type

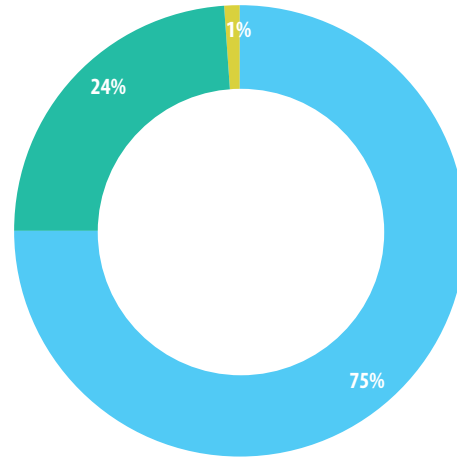
The breakdown of the 9,375 GWh of energy consumption reported for 2016 between electrical, heating (thermal) and transport is illustrated in Figure 6. The thermal and transport subtotals are broken down by fuel type in Figures 6A and 6B.

FIG. 6: CONSUMPTION SPLIT



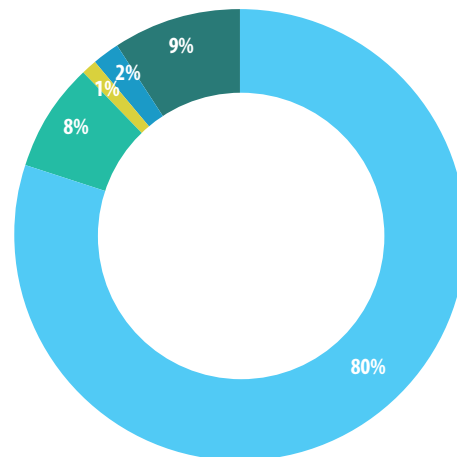
	GWh
Electricity	4,909
Thermal	2,349
Transport	2,117
Total	9,375

FIG. 6A: THERMAL ENERGY BREAKDOWN



	GWh	%
Natural Gas, LPG & Biogas	1,747	75%
Heating Oils	569	24%
Wood Fuels	33	1%
Total	2,349	100%

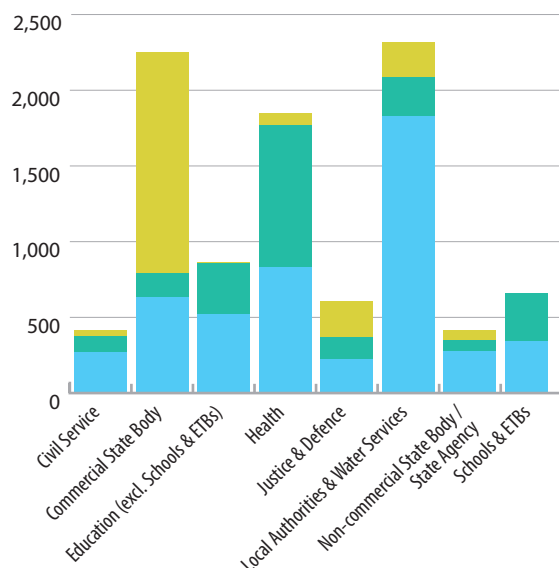
FIG. 6B: TRANSPORT ENERGY BREAKDOWN



	GWh	%
Road Diesel	1,699	80%
Marked Diesel (Non-thermal)	158	8%
Petrol	19	1%
Biofuels	52	2%
Other Transport Fuels	189	9%
Total	2,117	100%

The consumption patterns in the sub-sectors are illustrated in Figure 7.

FIG. 7: BREAKDOWN OF PRIMARY ENERGY CONSUMPTION BY SUB-SECTOR (GWH)

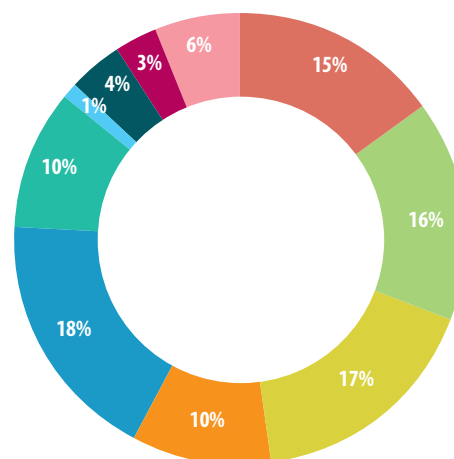


	Electricity GWh	Thermal GWh	Transport GWh
Civil Service	266	110	39
Commercial State Body	631	160	1,463
Education (excl. Schools & ETBs)	517	340	6
Health	831	938	79
Justice & Defence	221	150	235
Local Authorities & Water Services	1,827	259	233
Non-commercial State Body / State Agency	272	78	61
Schools & ETBs	344	315	2
Total	4,909	2,349	2,117

3.4 Electricity Consumption

The total electricity consumption is 4,909 GWh and is broken down in Figure 8.

FIG. 8: BREAKDOWN OF ELECTRICITY CONSUMPTION

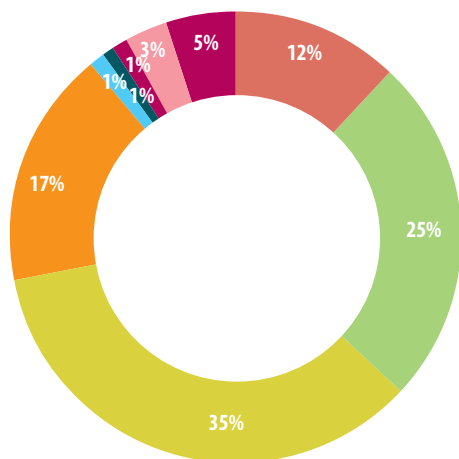


	GWh
Office Buildings	714
Education Buildings	799
Healthcare Buildings	818
Other Buildings	498
Water Services	891
Public Lighting	472
Waste & Other Processing	73
Transport	185
Other	154
Unknown	304
Total	4,909

3.5 Natural Gas Consumption

The total natural gas consumption is 1,656 GWh and is broken down in Figure 9.

FIG. 9: BREAKDOWN OF GAS CONSUMPTION



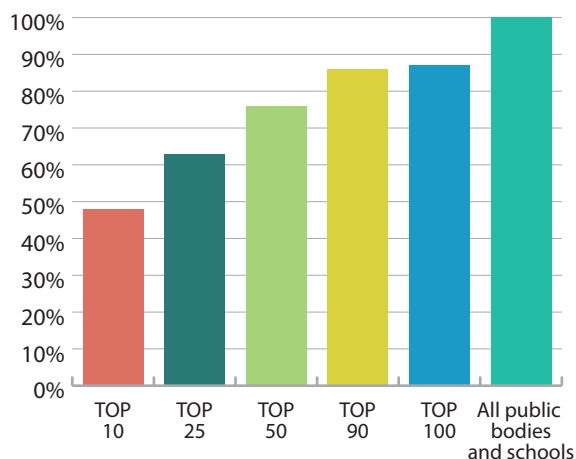
	GWh
Office Buildings	195
Education Buildings	411
Healthcare Buildings	579
Other Buildings	290
Water Services	10
Waste & Other Processing	17
Electricity Generation	21
Other	42
Unknown	91
Total	1,656

10 public bodies account for 48% of total consumption

3.6 Main Energy Consumers

Altogether, the total primary energy consumption in 2016 of the ten largest energy consumers was 4,460 GWh, which accounts for 48% of total reported consumption. The 100 largest energy consumers that reported account for 87% of the total reported primary energy consumption.

FIG. 10: BREAKDOWN OF MAIN ENERGY CONSUMERS



	GWh
Top 10	4,460
Top 25	5,915
Top 50	7,089
Top 90	8,047
Top 100	8,190
All public bodies and schools	9,375

It is likely that improvements by the top 50 energy consumers (which account for 76% of energy consumption) will largely determine if the 33% target will be met by the sector by 2020.

The 10 largest energy consumers that reported for 2016 are set out in alphabetical order below.

- An Garda Síochána
- An Post
- Bus Éireann
- daa plc
- Defence Forces
- Dublin Bus
- Dublin City Council
- HSE
- Iarnród Éireann / Irish Rail
- Irish Water

4. Analysis of Energy Savings Achieved and Performance

4.1 Total Public Sector Primary Energy Savings (GWh) and Performance

The combined savings in 2016 of the public bodies and schools that submitted complete reports is 2,336 GWh⁹ of primary energy, as illustrated in Figure 11. This amount is equivalent to a 20% improvement compared to what the business-as-usual energy consumption would have been had these organisations maintained their baseline efficiency levels¹⁰. This is the primary indicator used for tracking the sector’s progress towards the 33% target. Based on 2016 data, a 33% improvement would be equivalent to 3,879 GWh of primary energy savings.

The 2,336 GWh of annual energy savings are equivalent to 520,000 tonnes of annual CO₂ savings.

The cumulative avoided CO₂ emissions (up to 2016) since their baselines reported by the public bodies and schools that submitted complete reports amount to 2,683,000 tonnes.

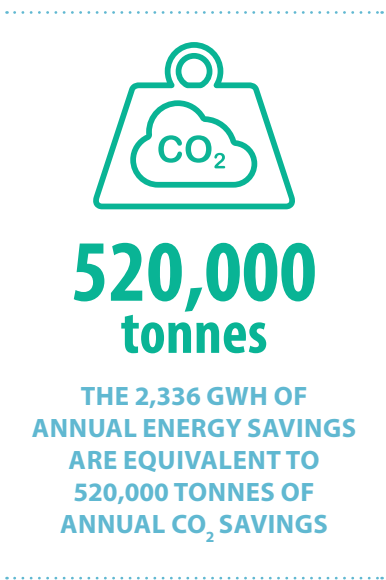
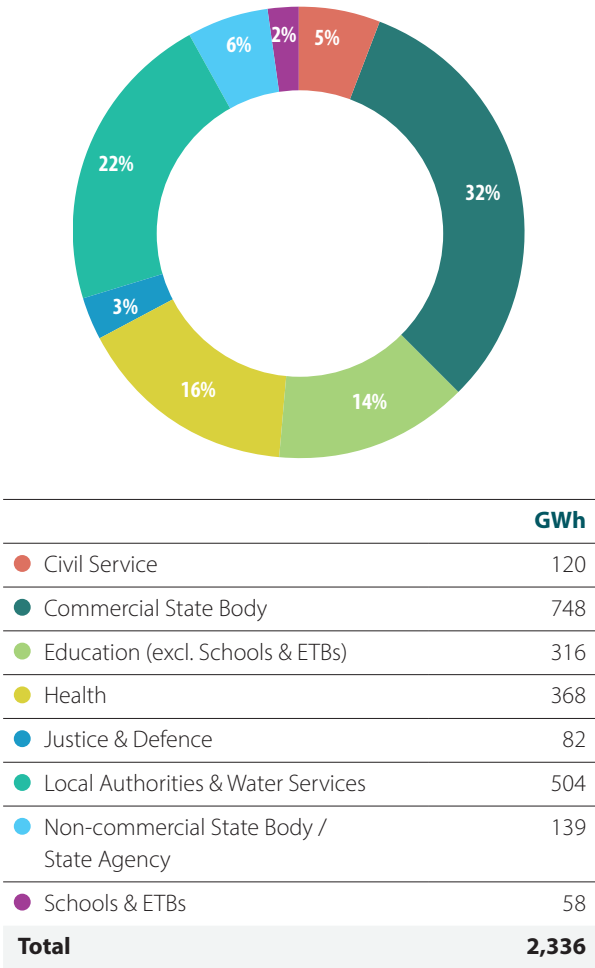


FIG. 11: SOURCES OF ENERGY SAVINGS



9 Calculated by subtracting each organisation’s actual 2016 energy consumption from its business-as-usual energy consumption. The business-as-usual energy consumption is the amount that each public body would have consumed in 2016 had it not made the reported efficiency gains since its baseline.

10 The calculation of these results incorporates adjustments to the business-as-usual consumption for local authorities to account for the transition of water services to Irish Water.

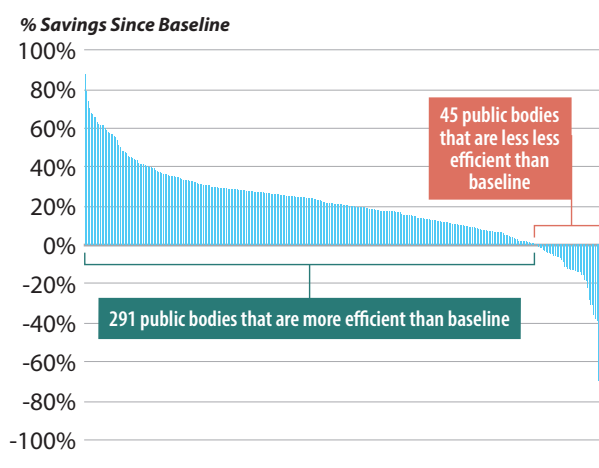
The analysis of the performance of the 336 public bodies (excluding standalone schools) that reported shows that:

- **47%** are more efficient than their baselines and are on track for their 2020 target. (Aggregate 2016 savings of 1,616 GWh, which is equivalent to 360,000 tonnes of CO₂)
- **40%** are more efficient than their baselines but are not yet on the path to the 2020 target. (Aggregate 2016 savings of 738 GWh, which is equivalent to 164,000 tonnes of CO₂)
- **13%** are less efficient than their baselines. (Aggregate 2016 deterioration in performance of 37 GWh, which is equivalent to 8,000 tonnes of CO₂)

Of the public bodies that reported, **87% have made improvements on their baselines**. Taking both the savings and deteriorations into account, overall improvement for the public bodies is 2,318 GWh. This is equivalent to 516,000 tonnes of CO₂.

The distribution of the performance results is shown in Figure 12.

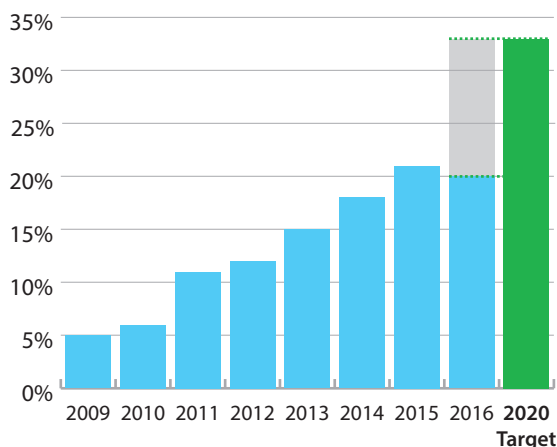
FIG. 12: OVERALL LEVEL OF IMPROVEMENT ON BASELINE



2016 Performance (all sectors)	No. Public Bodies	No. Stand-alone Schools	Total No.
>40% improvement	42	103	145
30-40% improvement	40	118	158
20-30% improvement	89	237	326
10-20% improvement	73	345	418
0-10% improvement	47	425	472
Deterioration in performance	45	943	988
Total	336	2,171	2,507

The graph in Figure 13 tracks how the total savings achieved in each year since 2009 compare to the 2020 target.

FIG. 13: ANNUAL PRIMARY ENERGY SAVINGS



Year	Saving GWh
2009	524
2010	563
2011	1,134
2012	1,262
2013	1,641
2014	2,013
2015	2,353
2016	2,336

In addition to the energy efficiency improvements achieved, the absolute level of energy consumption has reduced over time. The 336 public bodies and 2,171 schools that reported data consumed **801 GWh** less primary energy in 2016 than they did in their baselines.

4.2 Analysis of Total and Cumulative Public Sector Energy Savings (€)

The value of the **energy savings** reported for 2016 is **€133 million**. As the total spend in 2016 for all of the organisations that reported data is €536 million, this represents a saving of 20% in energy costs attributable to energy efficiency improvements.

The value of the cumulative energy savings (up to 2016) since their baselines reported by the public bodies and schools that submitted complete reports is **€737 million**.



**€737m and
2.68m tCO₂**

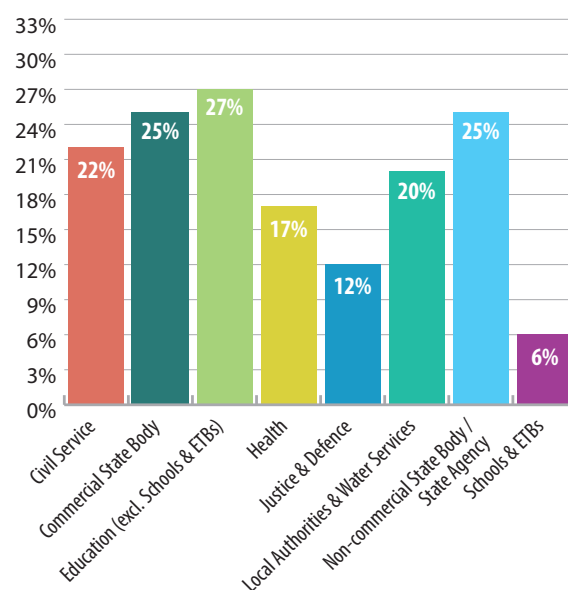
**THE CUMULATIVE SAVINGS
SINCE BASELINES
FROM PUBLIC BODIES
AND SCHOOLS**

4.3 Sub-sector Primary Energy Savings (GWh)

The breakdown of savings in primary energy (GWh) and percentage improvement on 'business as usual' (BAU) by sub-sector is set out in the table in Figure 14. The equivalent CO₂ savings are also identified.

The bar chart in Figure 14 illustrates percentage savings for each sub-sector.

FIG. 14: SUB SECTOR COMPARISON OF PERFORMANCE TO DATE (PRIMARY ENERGY SAVINGS)



Sub-sector	2016 Energy Savings (Primary)		CO ₂ Savings
	GWh	% Improvement on BAU	Tonnes (000s)
Civil Service	120	22%	26
Commercial State Body	748	25%	173
Education (excl. Schools and ETBs)	316	27%	68
Health	368	17%	79
Justice & Defence	82	12%	19
Local Authorities & Water Services	504	20%	112
Non-commercial State Body / State Agency	139	25%	30
Schools & ETBs	58	6%	13
Total	2,336	20%	520

BAU: business as usual

Making Progress

The reports submitted this year demonstrate energy efficiency improvements achieved through the implementation of thousands of individual efficiency measures as part of an overall drive for energy efficiency by public sector organisations. Over half of the measures reported addressed **lighting, heating, building fabric** and **structured energy management improvements**. Other areas targeted were ICT systems, water services, on-site renewables and transport.

The projects illustrated on these pages are a selection of the **3,123 projects** and measures that the public sector has reported to SEAI in 2016 and are representative of the diverse range of energy efficiency improvements which have been implemented across the country. While the overall level of project reporting has improved, many of the efficiency measures are individually of a small scale. Organisations will need to become more proactive in both undertaking energy efficiency projects of scale, and reporting on them, so that other public bodies can benefit from their experience.

Note: Case study savings are total final consumption, all other figures in the report are primary energy consumption



1,000,000 kWh

Following the opening of the 5 MW landfill gas utilisation plant at Drenth, County Kildare in 2014, an opportunity was identified to increase the efficiency of how the landfill gas is used to generate electricity. An innovative landfill gas cleaning system was installed in 2015 which has significantly reduced the downtime required to clean the engine, by tackling the impurities carried in the gas. The plant can now capture and combust more of the landfill gas, with less flaring, making the electricity production process more efficient. The impact of this efficiency has been measured as an improvement of more than 1,000,000 kWh annually. The Drenth plant can now produce 5.6 MW of renewable power from landfill gas - enough to power 8,500 homes.

Bord na Móna



39%

In 2015, Gas Networks Ireland completed replacement work on the fourteen-year-old chillers at its Cork headquarters building, installing two new high-efficiency, air-cooled 130 kW chillers. Works included a new chiller sequencer panel, additional controls and instrumentation to operate the new chillers, balancing the chilled water load and delivering an energy reduction of 39% and savings of 45,500 kWh per annum. This project has reduced annual energy costs by €7,000 and saves 21 tonnes of CO₂ emissions every year.

Gas Networks Ireland



32%

St. James's Hospital in Dublin has improved the efficiency of its water services by replacing four old pumps, estimated to have consumed over 123,500 kWh per annum, with two intelligent pumps. The new pumps, with built in variable speed drives, have delivered a 32% saving on energy consumption, which is worth €5,500 every year. Maintenance costs for the new pumps are also lower as they can now be interrogated remotely and generate live status reports. The higher efficiency of these units will also deliver a longer service lifetime.

St. James's Hospital





400,000 kWh

Leopardstown Park Hospital upgraded approximately 40% of its buildings, in 2016, by installing 300 mm high density insulation across all roof and attic areas. Not only have these measures increased comfort levels for staff and patients but gas usage has decreased by 303,900 kWh. In conjunction with the insulation works, lighting in high usage areas was upgraded to LED, saving a further 59,600 kWh on electricity usage. The new lights have a lifespan of 50,000 hours, resulting in further savings due to reduced maintenance costs. The hospital received *EcoMerit* certification in September 2016, demonstrating its ongoing commitment to energy saving practices.

Leopardstown Park Hospital

33%



Waterford City and County Council recently completed the first phase of energy efficiency upgrades at City Hall Waterford. The works included the installation of two high-efficiency gas modulating condensing boilers, three variable flow pumps for heat distribution and an air handling unit. A new building energy management system was also installed to provide centralised control of the new heating and ventilation system. Overall, energy consumption has reduced within the building by 33% with significant reductions in electricity and gas consumption.

Waterford City and County Council



>€9,000

S.O.S. Kilkenny provides services to people with intellectual disabilities at its Callan Road campus. In 2016, it replaced the outdated storage heating system in four of the day care buildings with a district heating system. Piped radiators now supply heat throughout each of the 2,000 m² buildings and thermostats control the zone pump which supplies this heat. Roof insulation was also upgraded as part of the works, reducing heating demand. Overall savings are 17,700 kWh and over €9,000 per year.

S.O.S. Kilkenny



€8,100



Kilkenny College recently installed three new, high-efficiency condensing gas boilers in its dormitory complex. In addition, the school put in place a building management system (BMS) with the objective of remotely controlling and regulating the 10 boiler houses that are scattered throughout the campus. The primary focus of the upgrades was to guarantee the delivery of a more efficient energy generation and management solution. It is estimated that the BMS will achieve a minimum energy reduction of 12% for the school, with budgeted energy savings of 172,500 kWh, worth €8,100 annually.

Kilkenny College



€41,600 OVER 9 MONTHS

As part of a major building refurbishment, the National Gallery has installed a combined heat and power (CHP) unit below the grass courtyard in front of its building. The CHP unit has now experienced both peak summer and winter conditions and the monitored data for the first 9 months shows 756,800 kWh of electricity and 1,173,100 kWh of heat generated, 150 tonnes of carbon saved, and a cost saving of €41,600 (excluding maintenance costs).

The total installation cost, including all associated wiring controls and plumbing, was €173,000 which will give a simple payback of just over 3 years.

National Gallery of Ireland



5. Towards 2020

5.1 Sub-sectoral Performance

The analysis of the data reported by 336 public bodies and 2,171 schools shows that the annual energy efficiency savings at 2016 represents an overall efficiency gain of 20%.

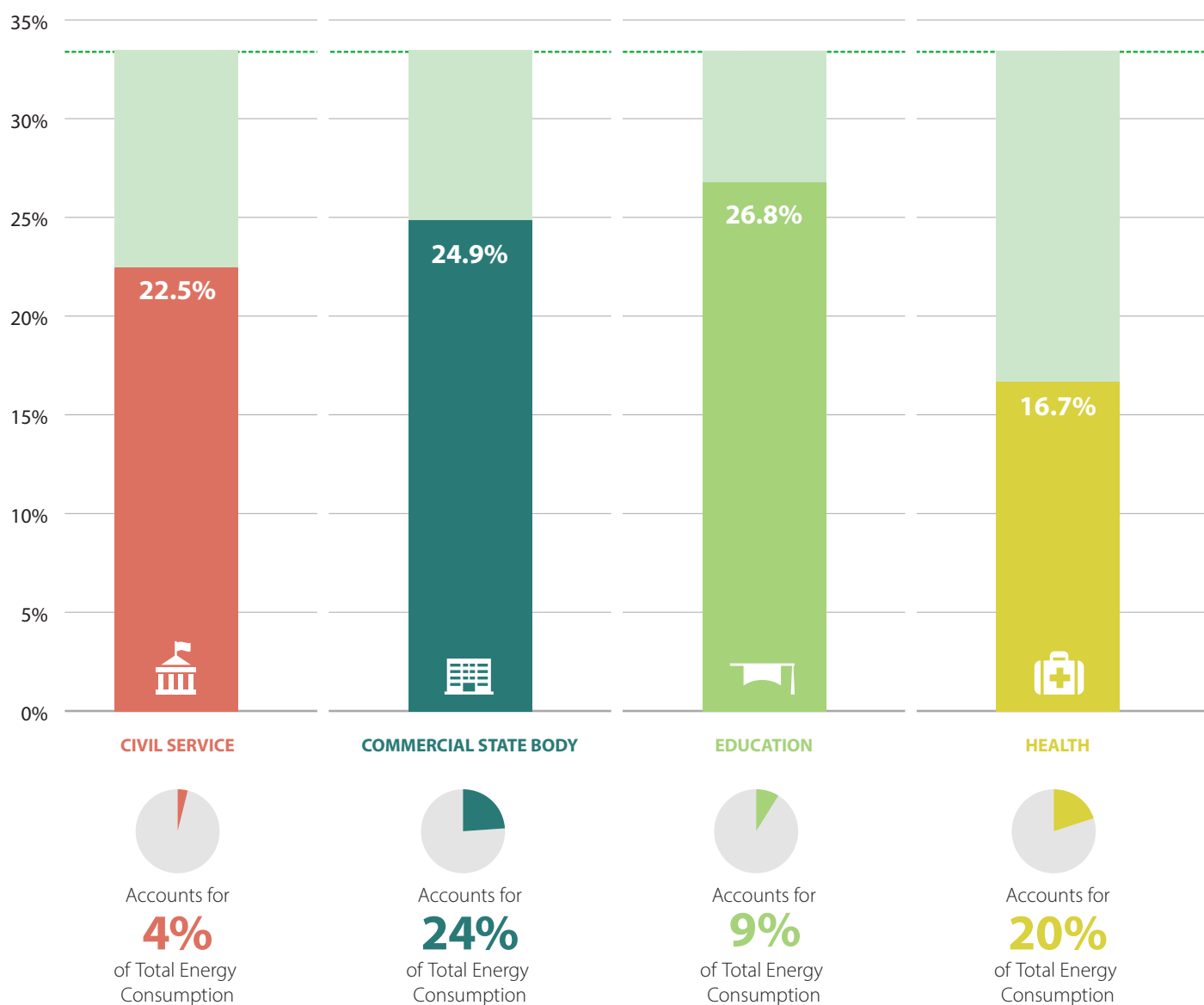
Although a 20% efficiency improvement represents a substantial saving, there are significant challenges ahead for public bodies to bridge the gap to the 2020 target.

Figure 15 illustrates the 2016 position of each sub-sector with respect to the target.

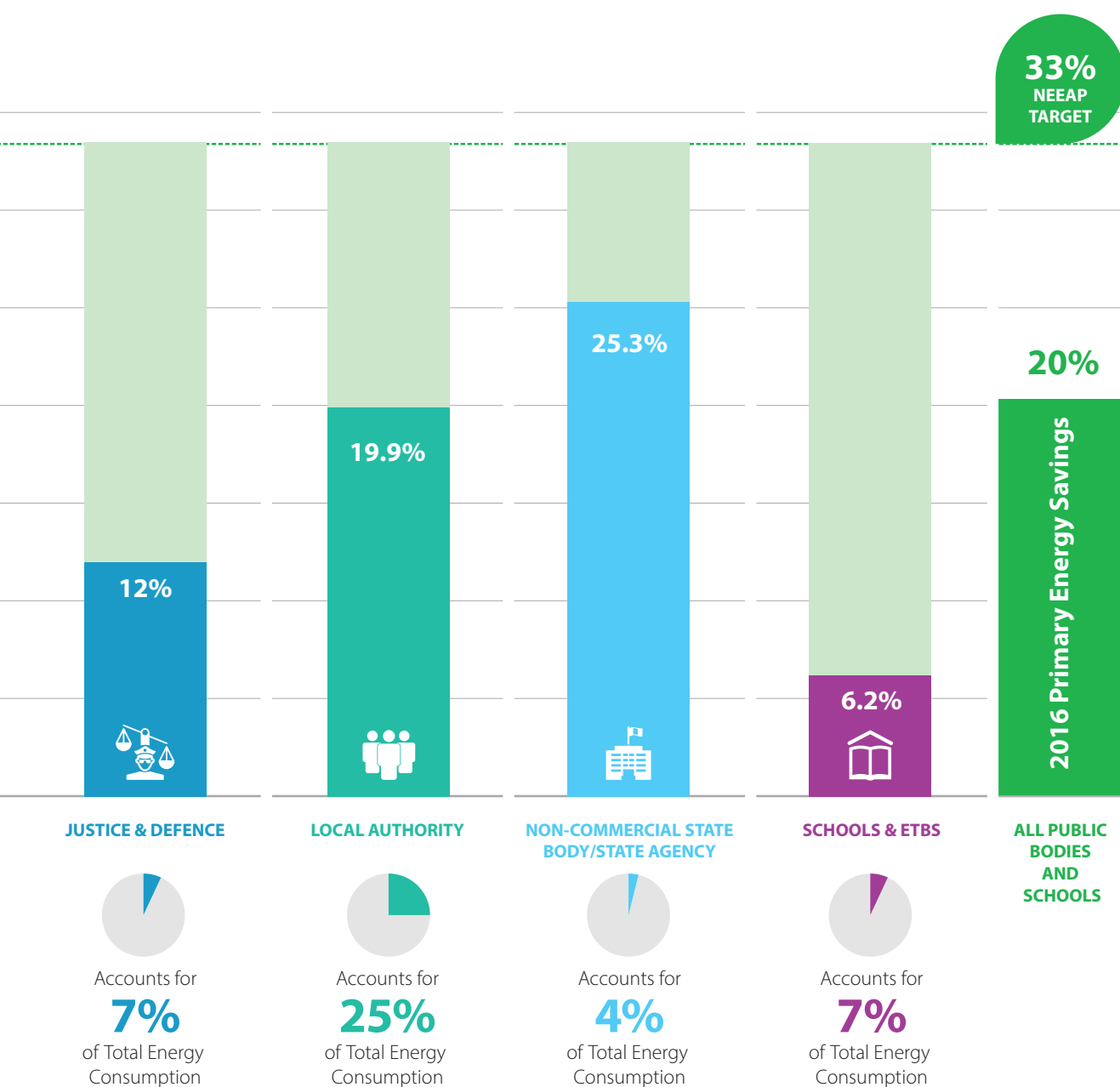
A collective effort across all sub-sectors will be required to meet our 2020 obligations. The M&R performance measurement system enables every organisation – regardless of its level of energy consumption – to analyse the gap to target and design strategic interventions in energy efficiency that will have the most significant impact for it.

The public sector organisations that were requested to submit reports are detailed in section 5.3.

FIG. 15: SECTORAL PERFORMANCE AGAINST 2020 NEEAP TARGET



A collective effort across all sub-sectors will be required to meet our 2020 obligations.



5.2 Departmental Groups

The *Public Sector Energy Efficiency Strategy* established a governance framework for achieving the 33% target based on departmental groups. Each group comprises the relevant Government Department and the bodies under its aegis.

Figure 16 gives an overview of energy use by departmental group, as well as the number of public bodies in each group, their reporting status and the level of efficiency gains made by 2016. The consumption and efficiency data shown represent the **aggregate data for all of the individual public bodies within each departmental group, including the department itself.**

FIG. 16: BREAKDOWN OF SUBMISSIONS BY DEPARTMENTAL GROUP

Departmental Group	2016 Energy Consumption (Primary)	Complete reports	Overall Status (2016)	Energy Savings Since Baseline
% public sector				%
Agriculture, Food & the Marine	3%	9 of 9	● ¹	-3%
Business, Enterprise & Innovation	<1%	15 of 15	●	37%
Children & Youth Affairs	<1%	4 of 4	●	27%
Communications, Climate Action & Environment	5%	16 of 16	●	31%
Culture, Heritage & the Gaeltacht	1%	16 of 17	●	28%
Defence	3%	3 of 3	●	7%
Education & Skills	12%	74 of 78	●	25%
– Standalone Schools	5%	2,171 of 3,735	●	3%
Employment Affairs & Social Protection	1%	3 of 3	●	24%
Finance	2%	9 of 10	●	21%
Foreign Affairs & Trade	<1%	1 of 1	●	37%
Health	20%	76 of 78	●	17%
Housing, Planning & Local Government	12%	12 of 12	●	10%
– Local Authorities	13%	31 of 31	●	20%
Justice & Equality	4%	20 of 20	●	16%
Public Expenditure & Reform	1%	9 of 9	●	33%
Rural & Community Development	<1%	2 of 2	●	31%
Taoiseach	<1%	8 of 8	●	22%
Transport, Tourism & Sport	19%	28 of 30	●	26%

The overall status of energy efficiency improvement on baseline for 2016 is illustrated as follows:

●	●	●
More efficient than baseline and on track for 2020 target	More efficient than baseline, but not yet on the path for 2020 target	Less efficient than baseline

Note 1

There have been significant changes to the scope of the energy consumption reported by one public body within this group. This data is subject to further verification. Therefore, the savings figure shown for the group is provisional and may be revised in future years as the Department, the constituent public body and SEAL continue to work together to improve data quality.

5.3 Performance of Public Bodies

SEAI recognises that building a complete energy profile for organisations is an iterative process that will take time as public bodies are in a better position to submit improved data each year. This work is ongoing.

SEAI continues to work with public bodies and schools to improve the quality of their data through the provision of guidance materials, training and bespoke support services.

The public bodies and schools are listed as follows:

Public Bodies (Excluding Schools)

The 336¹¹ public bodies that made a complete submission to SEAI by the deadline are alphabetically listed in three groups according to their level of energy consumption, as follows:

- **Group 1: Energy consumption greater than 50 GWh**

This includes 35 public sector organisations, which account for 69% of total reported energy consumption.

- **Group 2: Energy consumption between 5 and 50 GWh**

This includes 130 public bodies, which account for 24% of total reported energy consumption.

- **Group 3: Energy consumption less than or equal to 5 GWh**

This includes 171 public bodies, which account for 2% of total reported energy consumption.

Standalone Schools

The 2,171 standalone schools that made complete submissions to SEAI by the deadline, accounting for 5% of total reported energy consumption, are listed alphabetically by county.

Non-reporting Public Bodies

The public bodies that did not report are listed alphabetically.

11 Including ETBs but excluding standalone schools.

5.3.1 Public Bodies (Excluding Schools)

GROUP 1 PUBLIC BODIES: ENERGY CONSUMPTION GREATER THAN 50 GWh

Public Body	Overall Status (2016)	Energy Savings Since Baseline
		%
An Garda Síochána	●	21.5%
An Post	● ²	7.7%
Bord na Móna plc	●	61.3%
Bus Éireann	●	1.8%
Coillte Teoranta	● ²	-14.0%
Cork City Council	● ³	23.0%
Cork County Council	● ³	7.3%
daa plc	●	44.3%
Defence Forces	●	6.6%
Department of Agriculture, Food & Marine	● ²	14.9%
Department of Social Protection	●	24.3%
Donegal County Council	● ³	6.6%
Dublin Bus	●	12.6%
Dublin City Council	● ³	26.0%
Dublin City University	●	32.1%
Dún Laoghaire-Rathdown County Council	● ³	24.7%
Electricity Supply Board	●	25.4%
Fingal County Council	● ³	26.2%

Public Body	Overall Status (2016)	Energy Savings Since Baseline
		%
HSE	● ²	15.4%
Iarnród Éireann / Irish Rail	●	32.9%
Irish Prison Service	●	6.2%
Irish Water	● ^{3a}	9.7%
Mater Misericordiae University Hospital	● ²	18.4%
National University of Ireland, Galway	●	29.7%
Office of Public Works	●	17.3%
Raidió Teilifís Éireann	●	43.3%
Revenue Commissioners	●	10.5%
South Dublin County Council	● ³	19.0%
St. James's Hospital	●	6.6%
St. Vincent's University Hospital	●	26.0%
Transport Infrastructure Ireland	●	10.6%
Trinity College Dublin	●	21.4%
University College Cork	●	34.5%
University College Dublin	●	24.1%
University of Limerick	●	20.4%

The overall status of energy efficiency improvement on baseline for 2016 is illustrated as follows:

More efficient than baseline and on track for 2020 target
 More efficient than baseline, but not yet on the path for 2020 target
 Less efficient than baseline

Note 1
Public body submitted sufficient data to calculate a savings result for 2016; however the result lies beyond the expected range of probable energy performance and needs verification.

Note 2
Aspects of the reported data to be addressed to improve data quality and verification.

Note 3
Each local authority's result includes the performance of water services assets up to and including 2013, but excludes water services since then.

Note 3a
Irish Water's energy performance is calculated on the basis of the water services assets' performance since 2009. These assets were owned and operated by local authorities up to the end of 2013, during which time the water services sector had improved its performance by 6.1%. The savings figure may be revised in future years as the local authorities, Irish Water and SEAI continue to work together to improve the quality and quantity of energy data, including historical data.

GROUP 2 PUBLIC BODIES: ENERGY CONSUMPTION 5 – 50 GWH

Public Body	Overall Status (2016)	Energy Savings Since Baseline
		%
Adelaide and Meath Hospital, Incorporating the National Children's Hospital	●	23.0%
Athlone Institute of Technology	●	20.4%
Bord Iascaigh Mhara	●	-1.8%
Brothers of Charity Services Ireland	● ²	17.0%
Campmill Communities (Ireland)	● ¹	
Cappagh National Orthopaedic Hospital	●	32.8%
Carlow County Council	● ³	21.4%
Cavan & Monaghan Education & Training Board	●	9.9%
Cavan County Council	● ³	24.0%
Central Bank of Ireland	●	27.8%
Central Remedial Clinic	●	13.7%
Cheeverstown House	●	6.4%
Cheshire Ireland	●	1.9%
Children's University Hospital	●	16.8%
City of Dublin Education & Training Board	●	8.2%
Clare County Council	● ³	9.1%
Commission for Communication Regulation	●	10.7%
Commissioners of Irish Lights	●	35.7%
Coombe Women & Infants University Hospital	●	-2.8%
Cope Foundation	●	13.6%
Cork Airport	●	41.1%
Cork Education & Training Board	●	-6.1%
Cork Institute of Technology	●	36.8%
Courts Service	●	3.6%
Daughters of Charity - Intellectual Disability Services	●	17.1%
Department of Communications, Climate Action & Environment	●	19.9%
Department of Education & Skills	●	24.3%
Department of Finance	●	11.3%
Department of Foreign Affairs & Trade	● ²	37.5%

Public Body	Overall Status (2016)	Energy Savings Since Baseline
		%
Department of Housing, Planning, Community & Local Government	●	17.4%
Department of Justice & Equality	●	32.9%
Department of Public Expenditure and Reform	●	69.9%
Department of Transport, Tourism & Sport	●	17.4%
Digital Hub Development Agency	●	-4.4%
Donegal Education & Training Board	● ²	45.6%
Dublin & Dún Laoghaire Education & Training Board	●	37.8%
Dublin Institute of Technology	●	26.9%
Dublin Port Company	●	16.8%
Dún Laoghaire Institute of Art, Design & Technology	●	1.7%
Dundalk Institute of Technology	●	-31.0%
EirGrid Plc	●	21.3%
Enable Ireland	●	28.2%
Enterprise Ireland	●	38.5%
Environmental Protection Agency	●	29.6%
Galway City Council	● ³	27.4%
Galway County Council	● ³	17.9%
Galway Mayo Institute of Technology	●	20.6%
Galway Roscommon Education & Training Board	●	17.4%
Gas Networks Ireland	●	41.3%
Houses of the Oireachtas Service	●	21.0%
IDA Ireland	●	58.7%
Inland Fisheries Ireland	●	0.6%
Institute of Technology Blanchardstown	●	61.8%
Institute of Technology Carlow	●	33.8%
Institute of Technology Sligo	●	20.7%
Institute of Technology Tallaght	●	30.8%
Institute of Technology Tralee	●	28.5%
Irish Aviation Authority	●	19.7%
Irish Blood Transfusion Service	●	24.5%
Irish Wheelchair Association	●	28.0%

The overall status of energy efficiency improvement on baseline for 2016 is illustrated as follows:



More efficient than baseline and on track for 2020 target



More efficient than baseline, but not yet on the path for 2020 target



Less efficient than baseline

Note 1

Public body submitted sufficient data to calculate a savings result for 2016; however the result lies beyond the expected range of probable energy performance and needs verification.

Note 2

Aspects of the reported data to be addressed to improve data quality and verification.

Note 3

Each local authority's result includes the performance of water services assets up to and including 2013, but excludes water services since then.

Public Body	Overall Status (2016)	Energy Savings Since Baseline
		%
Kerry County Council	● ³	29.2%
Kerry Education & Training Board	●	18.3%
Kildare & Wicklow Education & Training Board	●	-12.8%
Kildare County Council	● ³	13.5%
Kilkenny & Carlow Education & Training Board	●	6.1%
Kilkenny County Council	● ³	21.7%
Laois & Offaly Education & Training Board	●	7.4%
Laois County Council	● ³	30.8%
Leitrim County Council	● ³	-1.1%
Letterkenny Institute of Technology	●	41.2%
Limerick & Clare Education & Training Board	●	12.5%
Limerick City & County Council	● ³	14.6%
Limerick Institute of Technology	●	26.9%
Longford & Westmeath Education & Training Board	●	40.2%
Longford County Council	● ³	27.7%
Louth & Meath Education & Training Board	●	-6.8%
Louth County Council	● ³	34.6%
Marine Institute	●	-11.5%
Mary Immaculate College Limerick	●	29.2%
Marymount University Hospital and Hospice	●	61.5%
Maynooth University, NUIM	●	20.6%
Mayo County Council	● ³	17.5%
Mayo Sligo & Leitrim Education & Training Board	● ¹	
Meath County Council	● ³	7.1%
Mercy Hospital	●	27.2%
Milford Care Centre	●	-15.5%
Monaghan County Council	● ³	24.4%
Muiriosa Foundation	●	41.4%
National Gallery	●	32.6%
National Learning Network Ltd.	●	-13.9%
National Maternity Hospital	●	-0.2%
National Museum of Ireland	●	12.9%
National Rehabilitation Hospital	● ²	-37.9%

Public Body	Overall Status (2016)	Energy Savings Since Baseline
		%
National Treasury Management Agency	●	57.1%
Offaly County Council	● ³	19.9%
Our Lady's Children's Hospital Crumlin	●	23.9%
Our Lady's Hospice Harold's Cross Limited	●	13.2%
Peamount Hospital Newcastle	●	15.0%
Permanent TSB	●	20.1%
Port of Cork Company	●	26.9%
RehabCare	● ²	-15.6%
Roscommon County Council	● ³	19.0%
Rotunda Hospital	●	12.3%
Royal College of Surgeons in Ireland	●	30.6%
Royal Hospital	● ²	-13.0%
Royal Victoria Eye and Ear Hospital	●	32.8%
Saint John of God Community Services Limited	● ²	25.7%
Sea Fisheries Administration Division	●	1.0%
Shannon Airport Authority DAC.	●	19.1%
Sligo County Council	● ³	6.3%
South Infirmary - Victoria Hospital	●	-5.8%
Sport Ireland	● ²	62.7%
St. Michael's Hospital	●	13.7%
St. Michael's House	●	11.4%
State Laboratory	●	28.7%
Stewarts Care Ltd	●	25.5%
Sunbeam House Services	●	15.1%
Teagasc	●	-1.9%
The Irish Museum of Modern Art	●	28.8%
Tipperary County Council	● ³	45.1%
Tipperary Education & Training Board	●	5.0%
Voluntary Health Insurance Board	●	29.0%
Waterford & Wexford Education & Training Board	●	-6.5%
Waterford City & County Council	● ³	11.6%
Waterford Institute of Technology	●	36.2%
Waterways Ireland	●	7.1%
Western Care Association	●	31.6%
Westmeath County Council	● ³	10.2%
Wexford County Council	● ³	15.0%
Wicklow County Council	● ³	1.6%

The overall status of energy efficiency improvement on baseline for 2016 is illustrated as follows:



More efficient than baseline and on track for 2020 target



More efficient than baseline, but not yet on the path for 2020 target



Less efficient than baseline

Note 1

Public body submitted sufficient data to calculate a savings result for 2016; however the result lies beyond the expected range of probable energy performance and needs verification.

Note 2

Aspects of the reported data to be addressed to improve data quality and verification.

Note 3

Each local authority's result includes the performance of water services assets up to and including 2013, but excludes water services since then.

GROUP 3 PUBLIC BODIES: ENERGY CONSUMPTION LESS THAN OR EQUAL TO 5 GWH

Public Body	Overall Status (2016)	Energy Savings Since Baseline
		%
Abbey Theatre	●	24.9%
Ability West	●	24.1%
Adoption Authority of Ireland	●	27.1%
AHEAD	●	28.6%
An Bord Pleanála	●	44.7%
An Foras Teanga – Ulster Scots Agency	●	13.2%
Arts Council	●	1.5%
Athlone Education Centre	●	24.6%
Bantry Bay Port Company Ltd	● ¹	
Blackrock Education Centre	●	35.2%
Bord Bia	●	65.6%
Broadcasting Authority of Ireland	●	25.8%
Carrick-on-Shannon Education Centre	●	-11.5%
Carriglea Cáirde Services	●	19.0%
Central Statistics Office	●	27.0%
Chief State Solicitor's Office	●	17.4%
Children's Sunshine Home/Laura Lynn	●	26.6%
Citizens Information Board	●	19.5%
Clare Education Centre	● ²	20.9%
Co. Wexford Education Centre	●	10.2%
Cobh Community Hospital	●	1.8%
Commission for Aviation Regulation	●	26.7%
Commission for Energy Regulation	●	57.7%
Commission for Railway Regulation	●	67.7%
Companies Registration Office & Registrar of Friendly Societies	●	-4.5%
Competition and Consumer Protection Commission	●	10.6%
Cork Education Support Centre	● ²	17.6%
CORU	● ¹	
Crawford Art Gallery Cork	●	23.7%
Data Protection Commissioner	● ²	9.2%
Daughters of Charity – Child & Family Services	●	26.3%
Dental Council	●	20.8%
Department of Arts, Heritage, Regional, Rural & Gaeltacht Affairs	●	66.9%
Department of Children & Youth Affairs	●	29.1%
Department of Defence	●	18.2%

Public Body	Overall Status (2016)	Energy Savings Since Baseline
		%
Department of Health	●	19.4%
Department of Jobs, Enterprise & Innovation	●	36.4%
Department of the Taoiseach	●	18.2%
Design & Crafts Council of Ireland	●	-28.2%
Donegal Education Centre	●	29.1%
Donegal Regional Airport	●	2.7%
Drogheda Port Company	●	56.8%
Drumcondra Education Centre	●	23.1%
Dublin Dental Hospital & School	●	17.4%
Dublin Institute for Advanced Studies	●	33.0%
Dublin West Education Centre	●	15.6%
Dun Laoghaire Harbour Company	●	27.5%
Economic and Social Research Institute (ESRI)	●	-36.2%
Education Centre Tralee	●	6.8%
Ervia (Shared Services)	●	-12.7%
Fáilte Ireland	●	41.8%
Financial Services Ombudsman	●	29.7%
FOLD Ireland	●	8.3%
Food Safety Authority of Ireland	●	3.0%
Forensic Science Laboratory	●	17.1%
Foyle, Carlingford and Irish Lights Commission	●	19.8%
Galway Education Centre	●	-0.1%
Garda Inspectorate	●	25.1%
Garda Ombudsman Commission	●	23.6%
Good Shepherd Services	●	-22.4%
Health & Safety Authority	●	23.7%
Health Products Regulatory Authority	●	26.2%
Heritage Council	●	34.3%
Higher Education Authority Irish Research Council	●	39.5%
Horsereading Ireland Ltd	●	47.2%
Housing Finance Agency	●	16.5%
Incorporated Orthopaedic Hospital of Ireland	●	55.0%
Inishowen Development Partnership	●	12.6%
InjuriesBoard.ie	●	48.0%

The overall status of energy efficiency improvement on baseline for 2016 is illustrated as follows:



More efficient than baseline and on track for 2020 target



More efficient than baseline, but not yet on the path for 2020 target



Less efficient than baseline

Note 1

Public body submitted sufficient data to calculate a savings result for 2016; however the result lies beyond the expected range of probable energy performance and needs verification.

Note 2

Aspects of the reported data to be addressed to improve data quality and verification.

Public Body	Overall Status (2016)	Energy Savings Since Baseline %
Inspector of Prisons and Places of Detention	●	22.1%
Institute of Public Administration	●	0.8%
InterTradeIreland	●	12.5%
Irish Film Classification Office	●	-18.1%
Irish Human Rights & Equality Commission	●	59.7%
Irish Water Safety	●	28.3%
KARE	●	9.3%
Kildare Education Centre	●	25.1%
Kilkenny Education Centre	●	-12.8%
Labour Court	●	12.1%
Laois Education Centre	●	10.0%
Law Reform Commission	●	4.3%
Léargas - The Exchange Bureau	● ¹	
Legal Aid Board	●	14.9%
Leopardstown Park Hospital	●	14.7%
Limerick Education Centre	● ²	-30.8%
Local Government Management Agency	●	40.1%
Mayo Education Centre	● ²	-7.7%
Medical Bureau of Road Safety	●	25.4%
Mental Health Commission	●	39.4%
Met Éireann	●	20.1%
Monaghan Education Centre	●	12.1%
National Archives	● ²	53.5%
National Cancer Registry Board	●	11.7%
National College of Art and Design	●	26.8%
National Council for Special Education	●	11.3%
National Disability Authority	●	1.5%
National Economic and Social Development Office	●	30.4%
National Library of Ireland	●	25.2%
National Milk Agency	●	-8.9%
National Oil Reserves Agency	●	44.0%
National Transport Authority	●	39.9%
National Treatment Purchase Fund	●	7.3%
Navan Education Centre	●	23.3%
NCCA (National Council for Curriculum and Assessment)	●	35.1%
Northern & Western Regional Assembly	●	24.7%

Public Body	Overall Status (2016)	Energy Savings Since Baseline %
NSAI	●	11.3%
Nursing and Midwifery Board of Ireland	●	17.3%
Office of the Attorney General	●	4.0%
Office of the Comptroller & Auditor General	●	-39.2%
Office of the Director of Corporate Enforcement	●	33.1%
Office of the Director of Public Prosecutions	●	37.1%
Office of the Ombudsman	●	30.9%
Office of the Ombudsman for Children	●	13.5%
Office of the Ombudsman for the Defence Forces	●	27.2%
Oifig an Choimisinéara Teanga	●	16.7%
Ordnance Survey Ireland	●	-3.1%
Port of Galway	● ²	35.2%
Port of Waterford Company	●	65.7%
Pre-Hospital Emergency Care Council	●	21.3%
President's Establishment	●	8.5%
Private Security Authority	●	4.8%
Probation Service agency of Dept of Justice & Equality	●	18.6%
Property Service Regulatory Authority	●	55.7%
Public Appointment Service	●	50.3%
Quality and Qualifications Ireland	●	61.6%
Regulator of the National Lottery	●	-13.5%
Residential Tenancies Board	●	-3.6%
Road Safety Authority	● ²	47.5%
Royal Irish Academy	● ²	19.4%
Royal Irish Academy of Music	●	6.9%
safefood	●	24.3%
Science Foundation Ireland	● ²	29.0%
Sea Fisheries Protection Authority	●	4.0%
Shannon Commercial Properties	●	29.5%
Shannon Foynes Port Company	●	18.9%
Sligo Education Centre	●	-12.5%
SOLAS	●	28.5%
SOS Kilkenny Ltd.	●	-5.0%
Southern Regional Assembly	●	25.0%
Special EU Programmes Body	●	28.1%

The overall status of energy efficiency improvement on baseline for 2016 is illustrated as follows:

● More efficient than baseline and on track for 2020 target

● More efficient than baseline, but not yet on the path for 2020 target

● Less efficient than baseline

Note 1

Public body submitted sufficient data to calculate a savings result for 2016; however the result lies beyond the expected range of probable energy performance and needs verification.

Note 2

Aspects of the reported data to be addressed to improve data quality and verification.

Public Body	Overall Status (2016)	Energy Savings Since Baseline
		%
St Josephs Foundation	●	9.0%
St. Catherine's Association Ltd.	● ²	-69.9%
St. Christopher's Services Ltd.	●	39.8%
St. Cronan's Association CLG	●	7.2%
St. Francis Hospice	●	28.6%
St. John's Hospital	●	25.8%
St. Patrick's Centre Kilkenny	●	47.9%
St. Vincent's Hospital Fairview	●	-6.6%
State Examinations Commission	●	2.0%
Sustainable Energy Authority of Ireland	●	43.6%
Teaching Council	●	36.3%
TG4	●	31.3%
The Bessborough Centre	● ¹	
The Health Information & Quality Authority (HIQA)	●	27.8%
The Health Insurance Authority	●	30.8%
The Health Research Board	● ²	56.7%

Public Body	Overall Status (2016)	Energy Savings Since Baseline
		%
The Insolvency Service of Ireland	●	32.0%
The Irish Film Board	●	34.9%
The Medical Council	●	11.6%
The National Concert Hall	●	13.3%
The Pensions Board	●	30.6%
The Pharmaceutical Society of Ireland - The Pharmacy Regulator	●	51.0%
The Property Registration Authority	●	14.8%
Tourism Ireland	●	35.4%
Údarás na Gaeltachta	● ²	26.6%
Valuation Office	●	8.8%
Valuation Tribunal	● ¹	
Waterford Teachers' Centre	●	4.7%
West Cork Education Centre	●	-18.4%
Western Development Commission	●	29.6%
Workplace Relations Commission	●	-4.8%

The overall status of energy efficiency improvement on baseline for 2016 is illustrated as follows:



Note 1

Public body submitted sufficient data to calculate a savings result for 2016; however the result lies beyond the expected range of probable energy performance and needs verification.

Note 2

Aspects of the reported data to be addressed to improve data quality and verification.

5.3.2 Standalone Schools

SEAI would like to extend its thanks to the following 2,171 schools, listed alphabetically by county, that made complete submissions by the reporting deadline.

Schools under the aegis of Education and Training Boards (ETBs) report their data via their parent ETBs. Individual ETB schools are not listed here. The ETBs are listed in section 5.3.1.

School Name	Roll Number
Carlow	
Ballinabranna Mixed NS	17756D
Bennekerry NS	17501Q
Bishop Foley Memorial School	17053P
Borris NS	00651R
Carlow ETNS	20295K
Fr Cullen Memorial NS	16938E
Gaelscoil Eoghain Uí Thuairisc	19811S
Holy Family BNS	19477J
Holy Family GNS	19478L
Leighlinbridge NS	19784S
Newtown Dunleckney Mixed	01215C
Presentation College Askea	61141M
Presentation De La Salle College	61150N
Queen of the Universe NS	18183K
Saplings Carlow Special School	20370V
SN Ceatharlach	18615N
SN Cill Damhain	18090D
SN Cluain Na Gall	17514C
SN Fiontain Naofa	18609S
SN Iosef Naofa	18424G
SN Mhichil	17462J
SN Mhuire	09320Q
SN Molaise	02124E
SN Muire Lourdes	13507I
SN Naomh Fhingín	17096K
SN Peadar Agus Pol Ballon	14837L
St Brendan's NS Drummond	17481N
St Brigid's Monastery	13105L
St Columba's NS	13607M
St Joseph's NS	17127S
St Lasarian's Special School	19315G
St Leo's College	61140K
St Mary's Academy CBS	61120E
St Mary's Knockbeg College	61130H
St Mary's NS Muinebeag	11135K
St Patrick's NS	18510W
St Patrick's NS Rathvilly	17663T
Cavan	
Aughadreena NS	18355N
Baile Na Mona	17531C
Bailieboro NS	18059J
Bailieborough Community School	91351S
Ballyhaise NS	17780A
Billis NS	12099O
Cabra Central NS	19527V
Cavan No. 1 NS	11517B
Cnoc An Teampaill	17625L
Convent of Mercy NS Belturbet	16057S
Corlea NS	14320U
Coronea NS	16767D
Crosserlough NS	19596R

Legend

BNS	Boys National School
GNS	Girls National School
NS	National School
PS	Primary School
SN	Scoil Náisiúnta
SS	Secondary School
ETNS	Educate Together National School

School Name	Roll Number
Darley NS	12312L
Drumkilly NS	19202Q
Drung No 2 NS	19921C
Holy Family SS Cootehill	19439B
Kildallon NS	15452T
Kill NS	19285A
Killeshandra NS (C of I)	11205F
Killyconnan NS	15120R
Killygarry NS	14399N
Kilmore Central NS	19322D
Loreto College Cavan	61070P
Milltown NS	08948L
Mullahoran Central NS	19363R
Royal School Cavan	61080S
Scoil Bhride Killshandra	16390F
Searcog I NS	14336M
SN Carraig A Bruis	18857O
SN Cillin	18393V
SN Corr Lorgan	18518P
SN Corrabha	16959M
SN Cruabanai	08453H
SN Doire Na Ceise	17601U
SN Lathrach	18833A
SN Lathrach 2	14211P
SN Leitir	18564W
SN Maodhog	17630E
SN Mhuire Muileann Larainn	08143P
SN Naomh Feidhlim	17326B
SN Naomh Maodhog	17440W
SN Padraig Lios Bo Duibhe	18340A
SN Tamhnach Dhuibh	17240Q
St Aidan's Comprehensive School	81005Q
St Brigid's NS	17230L
St Clare's PS	08490N
St Mary's NS Arva	16316Q
St Mary's NS Drung	16520P
St Patrick's College Cavan	61060M
St Patrick's NS Killinagh	19871N
Clare	
Annagh NS	15221A
Ballycar NS	18526O
Bansha NS Kilkee	11714D
Barefield Mixed NS	14830U
Bodyke NS	11990E
Boston NS	10763L
Broadford & Kilbane NS	20452A
Carrigaholt Mixed NS	18630J
Christost Ri	19559L
Clarecastle NS	17026M
Clohanbeg NS	11234M
Cluain Draigneach	18540I
Connolly NS	15408Q

School Name	Roll Number
Convent of Mercy NS	20041C
Coolmeen NS	12633I
Coore NS	20404M
Cratloe NS	04919H
Cross NS	14111L
Doora NS	18696Q
Dromindoor NS	18950E
Eidhneach NS	14622N
Ennis NS	15042A
Ennistymon NS	20245S
Flagmount Central NS	19338S
Forgleann NS	18768P
Gaelscoil Mhicíl Cíosóg	19838P
Gaelscoil Uí Choimin	19999Q
Inch NS	16186G
Kildysart NS	15301V
Kilkishen NS	13870E
Kilmaley NS	14468G
Kilmihil NS	13826B
Kilnamona NS	13625O
Kilrush Community School	91448K
Lisdoonvarna NS	19700J
Lissycasey NS	18555V
Mary Immaculate SS	62000W
Meánscoil na mBráithre	61940T
Mercy Convent Killaloe	18624O
Miltown Malbay NS	18720K
Moveen NS	13876Q
Naomh Tola	19552U
New Quay NS	19043W
Ogonnelloe NS	17563P
Quilty NS	17020A
Raheen Wood Steiner NS	20312H
Rockmount Mixed NS	09390O
St Mary's NS Lahinch	18753C
Scoil An Sraith SN	16930L
Scoil Mhichil Cahermurphy	20434V
Scoil Mhuire Ennistymon	61950W
Scoil Mhuire Naisiunta	18227E
Scoil Na Maighdine Mhuire Cora Chaithlin	20127M
Scoil Na Mainistreach	20476O
Scoil Seanain Naofa	04548V
Shannon Airport 1 NS	18739I
SN Aibhistin Naofa	17847G
SN An Chríoch	18168O
SN Baile An Droichid	18467B
SN Baile Na Cailli	18639E
SN Cill Muire	13942D
SN Cluain An Atha	17246D
SN Cnoc An Ein	17583V
SN Cuibhreann	10568N
SN Iosef Naofa	18339P
SN Liosceanuir	18410S
SN Ma Sheasta	18565B
SN Mhuire Feakle	02439G
SN Mhuire Miliuc	18225A
SN Na Crannaighe	13804O
St Aidan's NS	19698C
St Anne's NS	19414I
St Caimin's Community School	91447I
St Flannan's College	61920N
St Joseph's SS Spanish Point	62010C
St Joseph's SS Tulla	62020F
St Mochulla's NS	20075T

School Name	Roll Number
Stonehall NS	15350L
Tomgraney NS	14571W
Toonagh NS	03898U
Tubber NS	10886E
Cork	
Adrigole NS	16885J
Ardagh BNS	12598J
Árdscoil Uí Urmoltaigh	62050O
Ashton School	81008W
Ath Treasna GNS	16648S
Ballinadee NS	09537S
Ballincarriga Mixed NS	10739O
Ballincollig Community School	91386O
Ballingree Mixed NS	15140A
Ballinspittle NS	00467B
Ballintotas NS	15165Q
Ballyclough Mixed NS	07006A
Ballyvongane Mixed NS	04578H
Baltydaniel NS	12447L
Bandon BNS	19977G
Banteer NS	02803B
Bantry BNS	15135H
Bartlemy NS	15701O
Beara Community School	91387Q
Bishop Murphy Memorial School	16683U
Bishopstown Community School	91397T
Boherbue Comprehensive School	81009B
Boherbue NS	16396R
Bunscoil Chríost Rí	20388R
Bunscoil Rinn An Chabhlaigh	13450F
Burnfort NS	11249C
Caheragh NS	19557H
Carrigaline Community School	91388S
Castletownsend Mixed NS	13728B
Christ King Girls SS	62692I
Christian Brothers College Sidney Hill	62520C
Christian Brothers SS Castleredmond	62360G
Christian Brothers SS Mitchelstown	62420V
Clogheen Mixed NS	12676D
Cloghroe Mixed NS	07242M
Cobh NS	10771K
Coláiste An Chroí Naofa	62130M
Coláiste An Spioraid Naoimh	62580U
Coláiste Cholmáin Mainistir Fhearmuí	62260C
Coláiste Chríost Rí	62560O
Colaiste Muire	62200H
Colaiste Na Toirbhirte	62061T
Conna NS	17528N
Convent NS	16159D
Convent of Mercy NS Kanturk	17087J
Coomhola NS	15646J
Curraghagalla NS	17790D
De La Salle College Macroom	62310O
Deerpark CBS	62540I
Derrycreha NS	14430E
Desertserges NS	16863W
Douglas Community School	91396R
Douglas Rochestown ENS	20413N
Dromina NS	11262R
Dundar Mhuighe NS	16940O
Dunmanway Convent INF	13662U
Dunmanway Convent NS	13661S
Dunmanway Model NS	05636A
Educate Together Carrigaline	20310D

School Name	Roll Number
Fermoy Adair NS	10523O
Freemount Mixed NS	06295F
Gaelcholáiste Mhuire	62531H
Gaelscoil An Ghoirt Alainn	19993E
Gaelscoil An Teaghlaigh Naofa	18292P
Gaelscoil Bheantraí	20001N
Gaelscoil Carrig Ui Leighinn	19881Q
Gaelscoil Dr M Ui Shuilleabhain	20009G
Gaelscoil Droichead Na Banndan	20025E
Gaelscoil Mhainistir Na Corann	20107G
Gaelscoil Mhuscraí	20151J
Gaelscoil Na Dúglaise	19882S
Gaelscoil Ui Drisceoil	20239A
Grange Fermoy NS	15594Q
Greenmount Monastery NS	12473M
Holy Family NS Shanagarry	17950W
Holy Family SS Charleville	19433M
Iosef Naofa	18377A
Kanturk BNS	14052V
Kealkil NS	16087E
Kilcolman NS	16259H
Kilcorney Mixed NS	08828B
Kilgariffe NS	10499U
Killavullen NS	15903D
Kilmagner NS	11337W
Kinsale Community School	91499E
Kinsale NS	14726C
Kyle NS	04442F
Laragh NS	05477G
Leamlara Mixed NS	04118T
Lios Maighir	17300G
Lisavaird Mixed NS	18659K
Liscarrol NS	12015F
Lisgriffin NS Goleen	18100D
Loreto SS Fermoy	62270F
Lower Glanmire NS	13663W
Macroon Convent NS	10047I
Maulatrahane Central NS	19978I
Mhichil Naofa	19525R
Mhuire Ar Chnoc Haoine	19714U
Midleton College Boarding School	62370J
Midleton Convent NS	00512D
Millstreet Community School	91390F
Monkstown NS	17323S
Muire Gan Smál C	17105I
Muire Gan Smál Cluain Dilleain	17955J
Naomh Eoin Easpal	14198D
Newmarket Boys' School	11236Q
Naomh Pol Special School	19203S
North Monastery SS	62530F
Our Lady of Lourdes NS	17313P
Our Lady of Mercy NS	09161W
Patrician Academy	62330U
Pobalscoil Na Tríonoide	91513S
Presentation Brothers College	62570R
Presentation Convent PS Bandon	05257P
Presentation SS Ballyphehane	62693K
Presentation SS Mitchelstown	62421A
Rathduff NS	08393P
Realt Na Maidine	18734V
Regina Mundi College	62691G
Ringaskiddy Lower Harbour NS	20049S
Riverstown NS	13747F
Roscarbery Con NS	14813U

School Name	Roll Number
Rusheen NS	12395S
SN Sean Baile Mor	03704E
SN Seosamh Cobh	15718I
School of the Divine Child (Scoil An Linbh Íosa)	18483W
Scoil Abán Naofa	15346U
Scoil Aiseiri Chriost	20038N
Scoil An Spioraid Naomh (Boys)	20077A
Scoil Bhríde Ballydehob	14225D
Scoil Bhríde Eglantine	18563U
Scoil Bhríde Rathcormac	17609N
Scoil Chaitigheirn	19507P
Scoil Chaitríona Ballynoe	18472R
Scoil Chros Tseáin	17363H
Scoil Colmcille	16680O
Scoil Dhaibhíre	13125R
Scoil Eoin	17754W
Scoil Fionnbarra	19637F
Scoil Freastogail Muire	17868O
Scoil Mhuire 1-3 Sidney Place	62690E
Scoil Mhuire Caislean Ui Dhonnabhain	18468D
Scoil Mhuire Fatima	20140E
Scoil Mhuire Gan Smál B	17993R
Scoil Mhuire Lourdes	13512B
Scoil Mhuire Milford	17829E
Scoil Mhuire Na Ngrast	19672H
Scoil na mBraithre Mitchelstown	17639W
Scoil na mBuachaillí	20022V
Scoil Naomh Aine Charleville	17156C
Scoil Naomh Eoin Ballincurragh	04230N
Scoil Naomh Mhuire C	17755B
Scoil Naomh Micheal Church Road	18388F
Scoil Naomh Seosamh Skibbereen	08430S
Scoil Phadraig Naofa Foxwood	20335T
Scoil Realt Na Mara Ballycotton	16109L
Scoil Ursula	05940D
Skibbereen Community School	91516B
SN Achadh Bolg	17515E
SN Achadh Eochaille	10243I
SN An Aird	12147W
SN An Gharrain	18020F
SN An Phairc	17794L
SN An Spioraid Naomh C	19000E
SN Ath Fhada	17579H
SN Ath Na Lionta	13483U
SN Baile Deasmumhan	14014N
SN Baile Muine	18246I
SN Baile Ui Chroinin	18475A
SN Baile Ui Ghiblin	02114B
SN Barra Naofa Bhuach	19231A
SN Barra Naofa Cailini	19232C
SN Bhreannain C	19427R
SN Carraig An Ime	17079K
SN Chaisleáin Uí Liatháin	01867W
SN Chuan Doir	01272O
SN Cill Dairbhíre	19526T
SN Cill Mhic Abhaidh	11245R
SN Clogach	18444M
SN Cnoc An Bhile	04152T
SN Cnoc Na Croighe	18549D
SN Cnoc Na Manach	17804L
SN Cuilinn Ui Caoimh	17171V
SN Droichead Na Bandan	18431D
SN Fhiachna	19420D
SN Fionan Na Reanna	18713N

School Name	Roll Number
SN Garran An Easaigh	18491V
SN Gleannamhain	18196T
SN Iosef Naofa Mardyke	16339F
SN Ioseph	11931L
SN Mharcuis B	19426P
SN Mhuire Araglinn	17761T
SN Mhuire Ballyhooley	19404F
SN Mhuire Rath Peacain	17360B
SN Muire Na Doirini	18461M
SN Na Mona Fliche	16955E
SN Naomh Antaine	12203G
SN Naomh Muire Fearann	18487H
SN Oir Cheann	12259K
SN Padraig Naofa Whitechurch	17667E
SN Rath A Bharraigh	17715M
SN Re Na Scrine	17765E
Sonas Special Primary Junior School	20162O
South Abbey NS	10724B
St Aloysius College Carrigtwohill	62140P
St Angela's College	62640M
St Brendan's NS	10548H
St Catherine's NS	18253F
St Colman's NS	02452V
St Columba's BNS, Douglas	13828F
St Columba's NS with Facility for Deaf Children	05508O
St Fin Barre's NS	18356P
St Francis Capuchin College	62460K
St Kevin's School	19788D
St Luke's Mixed NS	13648D
St Luke's NS Douglas	12012W
St Marie's of the Isle PS	14000C
St Mary's Central School	19595P
St Mary's Church of Ireland NS	18279A
St Mary's Convent G	17103E
St Mary's High School	62380M
St Mary's NS Orilia Terrace	16377N
St Mary's SS	62350D
St Mary's SS Macroom	62320R
St Mary's Special School	19759T
St Matthias NS	13976U
St Patrick's College	62730N
St Peter's NS	19761G
St Vincent's Convent NS	13696O
St Vincent's SS St Mary's Road	62590A
Star of the Sea PS	20105C
Sundays Well GNS	02707F
Templebrady NS	12169J
Timoleague NS	12456M
Togher NS	17281F
Trafrask Mixed NS	05565D
Tullaslease Mixed NS	09815U
Union Hall Mixed NS	12383L
Ursuline SS, Blackrock, Cork	62650P
Vicarstown Mixed NS	06342L
Walterstown NS	12281D
Donegal	
Ardara Mixed NS	01733B
Ayr Hill NS Ramelton	18251B
Brownknowe NS	07464H
Bruckless NS	16664Q
Buncrana NS	16854V
Carndonagh Community School	91406R
Clochar Padraig Naofa	16821G
Creelough NS	10062E

School Name	Roll Number
Croaghross NS	15532R
Drumfad NS	16137Q
Dunfanaghy NS	18086M
Fintra NS	16357H
Frosses NS	16375J
Gaelscoil Adhamhnain	19971R
Gaelscoil Cois Feabhail	20144M
Gartan NS	13755E
Glebe NS Dun Na Ngall	17831O
Gleneely NS	18172F
Glenmaquin No 2 NS	09748I
Gortnacart NS	15554E
Inver NS	16458N
Kilbarron NS	10595Q
Killaghtee NS	19089A
Killybegs Commons NS	16608G
Killygordan NS	18874O
Little Angels Spec Sch	19724A
Monreagh NS	07143K
Moyle NS	19633U
Murroe NS	14704P
Naomh Bodain	19614Q
Naomh Bridhid	16836T
Niall Mór NS	11843O
Pobalscoil Chloich Cheannfhaola	91408V
Pobalscoil Ghaoth Dobhair	91409A
Ray NS	14941G
Robertson NS Ballybofey P O	18731P
Rockfield NS Rockfield Ballyshannon	09009Q
Saint Eunans N.s	18508M
Scoil An Gcillin	16603T
Scoil An Linbh Íosa	17260U
Scoil An Tsratha Mhóir	15208I
Scoil Aodh Rua Agus Nuala	19963S
Scoil Cholmchille	14631O
Scoil Cholmcille	18625Q
Scoil Cholmcille An Tearmann	14194S
Scoil Cholmcille Naofa	17956L
Scoil Cholmcille Newtowncunningham	16820E
Scoil Choluim	16279N
Scoil Mhuire An Craosloch	18371L
Scoil Mhuire B & C	19927O
Scoil Mhuire Dristearnain	18517N
Scoil Mhuire SS	62770C
Scoil Naomh Chaitriona	17945G
Scoil Naomh Fiachra	12077E
Scoil Naomh Íósaf	01574H
Scoil Naomh Mhuire Ceann Mhalanna	18446Q
Scoil Naomh Proinnseas	17729A
Scoil Naomh Seosamh Rathdomhnaill	18058H
Scoil Naomh Treasa C	16108J
Scoil Phádraig	17057A
Scoil Roisin	17328F
Scoil Treasa Naofa Malainn	17721H
Scoil an Br. M Ó Cléirigh	17268N
SN An Iorball Riabaigh	07626H
SN Arainn Mhor I	15955W
SN Baile An Bhailsig	18703K
SN Baile An Caislean	18700E
SN Baile Mor	18250W
SN Ceathru Caol	17549V
SN Chill Coinnigh	13563S
SN Domhnach Mor	17241Q
SN Donaigh	18939Q

School Name	Roll Number
SN Dun Ceannfhaolaidh	18421A
SN Fhionnain	17704H
SN Fothar	16903I
SN Glasain	16763S
SN Gleann Coimhead	17575W
SN Loch An Iubhair	16829W
SN Mhuire Baile An Ngallloglach	18151U
SN Muire Gan Smál Ard Aratha	18131O
SN Muire Gan Smál Clochar Loreto	18052S
SN Na Croise Naofa	18710H
SN Na Hacraí	18286U
SN Naomh Naille	15770K
SN Naomh Brid Na Dunaibh	19228L
SN Talamh Na Coille	17728V
SN Trianta	18319J
St Columba's Comprehensive School	81010J
St Columb's NS	15763N
St Conal's	19756N
St Davaddog's NS	16471F
St Francis NS	09660R
St Garvan's NS Drumhalla	16850N
St Mary's NS	14910S
St Mura's NS	15627F
St Oran's NS	16789N
St Patrick's NS Murlog	16054M
St Riaghan's NS	17716O
The Royal and Prior School	81011L
Dublin (County)	
Adamstown Castle ETNS	20268H
All Saints' NS	10494K
Baile Falbach	17472M
Balbriggan ETNS	20202A
Balscadden NS	09492W
Benincasa Special School	18863J
Blackrock College	60030V
Blessed Oliver NS	17569E
Boosterstown NS	19901T
Bracken ETNS	20282B
Carysfort NS	14586M
Christian Brothers College Monkstown Park	60180R
Cill Coscain	17595F
City West ETNS	20402I
Clonkeen College	60092U
Coláiste Choilm	60383I
Colaiste Iosagain	60042F
Coláiste Phádraig CBS	60264A
Corduff NS Lusk	15650A
Dalkey NS (2)	14647G
Divine Mercy Senior NS	20187H
Gaelscoil Bhaile Brigin	20252P
Gaelscoil Eiscir Riada	20223I
Gaelscoil Naomh Pádraig	19940G
Griffen Valley ETNS	20166W
Harold BNS	15132B
Holy Child Community School	91330K
Holy Child SS	60250M
Holy Family Community School	91301D
Holy Family Junior NS	19721R
Holy Family NS	13217W
Holy Family School Dunedin Park	19840C
Holy Family Senior NS	19877C
John Paul II NS	19627C
Kill-O-The-Grange NS	18886V
Kiltarnan NS 1	18806U

School Name	Roll Number
Loreto Abbey SS	60130C
Loreto College Swords	60810B
Loreto NS	19066L
Loreto SS Balbriggan	60010P
Malahide Community School	91325R
Monkstown ETNS	20060G
Mount Anville PS	17979A
Newpark Comprehensive School	81001I
Our Lady of Good Counsel GNS	19321B
Our Lady of Good Counsel BNS	19320W
Our Lady of Mercy Convent School	17970F
Rathdown School	60090Q
Rush and Lusk ETNS	20176C
Rush NS	19660A
SN San Treasa	18647D
Scoil Chronain	19503H
Scoil Colmcille Senior	19438W
Scoil Iosa NS	19577N
Scoil Mhuire	19817H
Scoil Mhuire Mxd	18080A
Scoil Moibhi	15569R
Scoil N Breandan	16844S
Scoil Phadraic Cailini	18412W
Scoil Réalt Na Mara	19625V
SN Cholmcille C	18977B
SN Cholmille B	18976W
SN Lusca	17961E
SN Pádraig Naofa Gleann Cuillin	17507F
St Andrew's NS Lucan	12014D
St Andrew's NS Malahide	11583O
St Anne's Mixed NS	19888H
St Brigid's NS Merville Rd	16794G
St Columbanus NS	20218P
St Cronan	19456B
St George's NS	15315J
St John's NS Ballybrack	19960M
St Joseph of Cluny SS	60260P
St Joseph's College Lucan	60263V
St Joseph's SS Convent Lane	60343T
St Louise De Marillac PS	20397S
St Molaga Senior NS	16970A
St Patrick's BNS	16267G
St Rahpaela's NS	17470I
St Teresa's PS	19515O
Swords Borough NS	12358M
Swords ETNS	20145O
The Harold School	20141G
Thornleigh ETNS	20302E
Willow Park School	60040B
Dublin 1	
Gardiner Street PS	12448N
Henrietta Street School	20021T
Rutland NS	19946S
Scoil Chaoimhin	19831B
St Vincent's Inf Boys	15816I
Dublin 2	
City Quay BNS	11578V
Dublin 3	
Eoin Baisde B Sois	19006Q
Howth Rd Mixed NS	13815T
Mount Temple Comprehensive School	81002K
SN Eoin Baisde G Sen	17148D
SN Na Lanai Glasa	17730I
St Joseph's CBS SS	60390F

School Name	Roll Number
St Mary's NS Windsor Ave	19981U
Dublin 4	
Dominican College, Muckross Park	60710U
John Scottus SS	68071G
Marian College	60500J
SN Paroiste Maitiu Nfa	18282M
St Conleth's College	60590N
St Declan's Special School	18569J
St Michael's College Ailesbury Road	60561G
St Patrick's GNS	15253N
Star of the Sea	15995L
Dublin 5	
Árdscoil La Salle	60291D
Chanel College	60550B
Gaelscoil Mide	19777V
Manor House School	60300B
Mercy College Coolock	60871V
Naiscoil Ide	17978V
Our Lady of ConSolation NS	20064O
Scoil Aine	17977T
Scoil Bhreandain	18360G
Scoil Eoin Greendale Road	19935N
Scoil Neasain	19309L
SN Caitriona C	18361I
SN Caitriona Naionain	18362K
Springdale NS	18646B
St Brigid's BNS Howth Road	19308J
St David's NS	19919P
St Eithne's Senior GNS	18969C
St Fiachra's Junior School	19496N
St John of God GNS	19920A
St Malachy's BNS	18968A
St Mary's SS Brookwood Meadow	60791A
St Monica's NS	19037E
Dublin 6	
Alexandra College	60910F
Gonzaga College SJ	60530S
Ranelagh Multi Denom NS	19928Q
Rathgar NS	14717B
Sandford Park School Ltd	60640C
SN Brighde Cullenswood House	18817C
SN Stratford	16966J
St Joseph's BNS	09750S
St Louis High School	60890C
St Pius X BNS	19177U
Stratford College	61020A
Zion Parish PS	14917J
Dublin 6W	
Harolds Cross NS	19924I
Our Lady's School	60860Q
St Clare's Convent NS	16651H
Templeogue College	60562I
Terenure College	60570H
Dublin 7	
Casa Caterina SS	19409P
Christ the King Schools	17459U
Coláiste Mhuire	60450U
Dominican Convent Girls	17465P
Dublin 7 ETNS	20131D
Fionnbarra Naofa BNS,	17464N
North Dublin Muslim NS Project	20152L
Presentation PS Georges Hill	05933G
SN Eoin Bosco Nai Buac	18632N
St Declan's College	60491L

School Name	Roll Number
St Dominic's College	60731F
St Gabriel's NS	20035H
St Mary's PS Dorest Street	20436C
St Peter's NS Phibsboro	20091R
Dublin 8	
CBS James's Street	60410I
Mercy SS Goldenbridge	60872A
Presentation PS Blackpitts	13611D
Presentation SS Warrenmount	60792C
Scoil Na Mbrathar Francis Street	18477E
St Audoen's NS	20104A
St James's PS	20429F
St John of God Special School	19151C
St Patrick's Cathedral GS	60660I
Dublin 9	
Árdscoil Rís	60420L
Dominican College Griffith Ave	60690R
Drumcondra NS	15895H
Glasnevin NS	14980Q
Holy Child NS	20338C
Lindsay Road NS	16177F
Maryfield College	60840K
Rosmini Community School	91344V
Scoil Chaitriona Bóthar Mobhí	60700R
Scoil Mobhi	19395H
SN Mhuire Na Mbrathar	16759E
SN Na Maighdine Muire B	19302U
St Joseph's for Children with Visual Impairment	18417J
St Patrick's NS	11525A
Trinity Comprehensive School	81017A
Virgin Mary GNS	19303W
Dublin 10	
Bainrion Na N-Aingal 2	18843D
Caritas College	60732H
Inchicore NS	20139T
St John's College De La Salle	60510M
Dublin 11	
Finglas Parochial NS	18205R
Gaelscoil Ui Earcain	20220C
Mother of Divine Grace	20059V
Scoil An Tseachtar Laoch	19430G
SN Naomh Feargal	18137D
St Brigid's Infant NS	20029M
St Ciaran's Special School	19325J
St Kevin's College	60581M
St Mary's SS Holy Faith Convent	60770P
Dublin 12	
Assumption SS	60851P
Drimnagh Castle CBS NS	19837N
Griffith Barracks Multi D School	20012S
Holy Spirit Junior PS	20463F
Holy Spirit Senior PS	20464H
Loreto College Crumlin Road	60800V
Marist NS	18386B
Meánscoil Iognáid Rís	60480G
Muire Na Dea Coirle G	17355I
Muire Og 2 Loreto Con	17683C
Our Lady of Mercy SS	60991I
Our Lady of Wayside NS	19764M
Rosary College	60841M
Scoil Eoin Armagh Rd	19382V
Scoil Iosagain Aughavannagh Road	17603B
SN Naomh Cillin	16983J
St Damien's NS	19943M

School Name	Roll Number
Dublin 13	
Belmayne ETNS	20308Q
Burrows NS	09642P
Pobalscoil Neasáin	91342R
Scoil Bhride JNS	19473B
SN Muire Agus Iosef	19533Q
St Fintan's High School	60370W
St Laurence's NS Brookstone Road	20437E
St Mary's SS Baldoyle	60021U
St Paul's Junior NS	19471U
Sutton Park School	60381E
The Donahies Community School	91318U
Dublin 14	
Clochar Loreto NS	00729F
Da La Salle College	60310E
Holy Cross NS	19904C
Jesus and Mary College	60891E
Notre Dame SS	60160L
Our Lady's Grove PS	19374W
Rathfarnham Educate Together	19945Q
Rathfarnham Parish NS	14939T
Scoil Mhuire Boys	19446V
SN An Dea Aoire	19939V
St Attracta's Senior NS	19716B
St Kilian's Deutsche Schule	60630W
Dublin 15	
Blakestown Community School	91316Q
Castaheany ETNS	20186F
Castleknock College	60100Q
Hartstown Community School	91339F
Pelletstown ETNS	20392I
Powerstown ETNS	20384J
Sacred Heart NS Huntstown	19755L
Scoil Bhride C Blanchardstown	18047C
Scoil Bride B	18046A
Scoil Mhuire Sin	19694R
Scoil Phobail Chuil Mhin	91315O
Scoil Thomais	19769W
SN Mhuire Sois	19605P
SN Naomh Mochta	18778S
St Ciaran's NS	19644C
St Patrick's NS	20130B
St Patrick's Senior School	19636D
St Philip the Apostle Junior NS	19601H
St Philip's Senior NS	19643A
Tyrrelstown ETNS	20201V
Dublin 16	
Ballyroan BNS	03359N
Bishop Shanahan NS	19658N
Marley Grange NS	19574H
Scoil Mhuire Ballyboden	19490B
Scoil Na Maighdine Mhuire Boy	19314E
SN Bhaile Eamonn	17953F
St Attracta's Junior NS	19537B
St Colmcille's Community School	91510M
St Colmcille's NS	19742C
St Olaf's NS	19319O
St Tiernan's Community School	91343T
Wesley College	61010U
Whitechurch NS	11638N
Dublin 17	
Gaelscoil Cholmcille	20052H
St Francis Junior NS	17104G
St Francis Senior NS	19668Q

School Name	Roll Number
Dublin 18	
Gaelscoil Thaobh Na Coille	20020R
Kilternan Church of Ireland NS	16629O
Rathmichael NS	11873A
St Laurence College	60262T
St Mary's NS Lamb's Cross	02872U
Dublin 20	
Chapelizod NS	10653E
Pobailscoil Iosolde	91302F
Scoil Bride C Palmerstown	18324C
Dublin 22	
Coláiste Bríde	60122D
Gaelscoil Na Camoige	19991A
Moyle Park College	60121B
Our Lady Queen of Apostles	19566I
Scoil Ide Clondalkin	19220S
Scoil Nano Nagle	19509T
Scoil Naomh Aine Clondalkin	19221U
Scoil Naomh Seosamh Clondalkin	18655C
SN Naomh Eoin Tower Road	18642Q
St Bernadette's Junior NS	19743E
St Mary's Senior NS	19647I
St Peter Apostle Junior NS	19569O
St Ronan's NS	19707A
Talbot Senior NS	19510E
Dublin 24	
Abacas Special School for Children with Autism	20378O
Glen Na Smol NS	17996A
Holy Rosary PS	19878E
Knockmore Junior School	19775R
Old Bawn Community School	91336W
Scoil Maelruain Junior	19462T
Scoil Maelruain Senior	19463V
Scoil Santain	19646G
St Aidan's CS	91338D
St Brigid's NS Brookfield	19782O
St Dominic's NS	20468P
St Joseph's Special School Balrothery	19520H
St Kevin's Boys	19465C
St Kevin's Girls	19466E
St Killian's Senior NS	19893A
St Mark's Community School	91332O
St Mary's School	18411U
St Thomas' Senior NS	19765O
Tallaght Community School	91335U
Galway	
Ábalta Special School	20371A
Ainbhthin Naofa	14590D
Ardscoil Mhuire Mackney	62890M
Ballycushion NS	18876S
Ballymana NS	10675O
Barnaderg Central School	19275U
Bun Scoil Naomh Chuana	12782C
Bushy Park NS	13856K
Calasancius College	63100I
Cappataggle Central School	19506N
Carnain NS	14031N
Castleblakeney NS	16464I
Ceathrú na nGarrdhanta	17631G
Cloghans Hill NS	17922R
Colaiste Chroí Mhuire	63130R
Coláiste Mhuire Ballygar	62900M
Creggs Central NS	19818J
Dominican College Taylors Hill	62990Q

School Name	Roll Number
Dunmore Community School	91414Q
Gaelscoil Dara	19858V
Gaelscoil De Hide Oran Mor	19998O
Galway ETNS	20000L
Glenamaddy Community School	91514U
Glinsk NS	19841E
Gortanumera NS	08379V
Holy Rosary College	63090I
Inishbofin NS	13927H
Jesus & Mary SS, Salerno	63001G
Kilchreest NS	19544V
Kilcolgan ETNS	20326S
Kilconly NS	15475I
Kiltormer NS	01328P
Lawrencetown NS	17170T
Lurga NS	12574S
Mercy College	63171I
Muire Na Dea Comhairle	17647V
Newtown NS Newtown	20280U
Parochial NS	16750J
Presentation College Athenry	62870G
Presentation College Currylea	63170G
Presentation College Headford	63040Q
Presentation PS Tuam	18042P
Scoil An Chroi Naofa	20042E
Scoil An Linbh Iosa	04515G
Scoil Bhreandain Naofa	17870B
Scoil Bhríde Mionloch	17759J
Scoil Bhríge Agus Bhreandain Naofa	19997M
Scoil Bride Brierfield	18309G
Scoil Fhursa	16937C
Scoil Ide Salthill	18634R
Scoil Mhuire An Tuairin	11261P
Scoil Mhuire Ard Aoibhinn	17980I
Scoil Mhuire Clarinbridge	19965W
Scoil Mhuire Clifden	19973V
Scoil Mhuire Corr Na Mona	18581W
Scoil Mhuire Doire Glinne	18252D
Scoil Mhuire Gan Smál Tiernascragh	18043R
Scoil Mhuire Maigh Cuilinn	19529C
Scoil Mhuire Oranmore	13365O
Scoil Muire Naofa	17877P
Scoil Na mBraithre	17282H
Scoil Na Ngasur	04506F
Scoil Naomh Iosef Castlehackett	18289D
Scoil Naomh Iosef Rathun	13914V
Scoil Naomh Mhuire An Gharran	18089S
Scoil Phobail	91412M
Scoil Phobail Mhic Dara	91411K
Seamount College	63050T
SN Andreis Naofa Liathdruim Coill Breac	03607G
SN Aine Naofa	17475S
SN An Ard Mhoir	10591I
SN An Chillin Ballyshrule	13665D
SN An Droma Ballinakill	17331R
SN An Fhairce	14712O
SN Ard	14421D
SN Ard Raithin	17007I
SN Baile An Mhuilinn	18460K
SN Baile Nua	15331H
SN Bheanain	18636V
SN Bhríde Leitir Caladh	13952G
SN Breandain Naofa Ath Cinn	17648A

School Name	Roll Number
SN Breandain Naofa Mullagh Gort Ui Mhaidin	17154V
SN Breandan Naofa Dun Doighre	17506D
SN Brighdhe Naofa	17772B
SN Briocain	17463L
SN Caitriona Sois	19401W
SN Caladh Na Muc	17655U
SN Cathair Geal	17807R
SN Chlair Na Gaillimhe	16804G
SN Choilm Chille	18514H
SN Cill Cuile	06044D
SN Cill Richill	16293H
SN Cill Tartain	17789S
SN Cillini Dioma	15071H
SN Cillinin	18268S
SN Domhnach Padraig	17207Q
SN Leitir Meallain	20345W
SN Leitirgeis	09833W
SN Lorcaín Naofa	17490O
SN M An Croi Gan Smál	18490T
SN Mhic Dara	19932H
SN Mhuire Baile Glas	14642T
SN Mhuire Carna	18121L
SN Muire Gan Smal	11290W
SN Muire Gan Smál Beal Atha na Sluagh	17198S
SN Muire Gan Smál Cladach Dubh	18608Q
SN Muire Letterfrack	13621G
SN N Breandain	18163E
SN NA bhForbacha	17668G
SN Na Coille Glaise	10863P
SN Na Fuar Coilleadh	17051L
SN Na Naomh Uile Cleggan	13821O
SN Naomh Ciarain	17574U
SN Naomh Colmain C/O Scoil Cholmain	17770U
SN Naomh Fhursa	17118R
SN Naomh Padraig An Chloch Bhreac	12106I
SN Naomh Padraig Tully	14420B
SN Naomh Thomais	17502S
SN Naomh Treasa Caiseal	17660N
SN Naomh Treasa Killure	10095T
SN Padraic Naofa	17784I
SN Seamus Naofa	19803T
SN Tir An Fhiaidh	17689O
SN Tir Na Cille	19357W
SN Tullach Ui Chadhain	08446K
St Columba's NS	20491K
St Jarlath's College	68074M
St John the Apostle, Knocknacarra NS	20108I
St Joseph's Patrician College Nun's Island	62960H
St Joseph's Special School Thomas Hynes Road	19047H
St Oliver Plunkett's NS Newcastle	19449E
St Oliver's Child Education and Development Centre	20330J
St Paul's	63101K
St Teresa's Special School	20328W
The Glebe NS Aughrim	15900U
Tirellan Heights NS	19795A
Kerry	
Aghatubrid NS	09878V
An Bhreac Chluain B	16217O
Ardfert Central NS	19384C
Aughacasla NS	14767Q
Ballymacelligott 1 NS	09782I
Boheshill NS	16744O

School Name	Roll Number
C.B.S. the Green SS	61440W
Cahir NS	18759O
Castledrum NS	09209B
Castlegregory Mixed NS	11746Q
Cil Conla NS	18214S
Clogher Mixed NS	12354E
Coláiste Íde	61301I
Crochan Naofa NS	10239R
Curraheen Mixed NS	15978L
Curranes NS	09938N
Derryquay Mixed NS	15878H
Douglas NS	12875J
Eiltin Naofa	19461R
Faha NS	11405N
Fibough NS	18756I
Firies Mixed NS	15945T
Gaelscoil Faithleann	19941I
Glounaiguillagh NS	01583I
Holy Cross PS	19487M
Holy Family	19536W
Holy Family NS Rathmore	20111U
Kilgobnet NS	07841L
Kiltallagh NS	17161S
Knockaclarig Mixed NS	14002G
Knockanes Mixed NS	13150Q
Lauragh NS	08530W
Lissivigeen Mixed NS	08791E
Loughfouder NS	14366V
Loughquittane NS	10049M
Mean Scoil Phadraig Naofa	61250R
Mercy SS Mounthawk	68070E
Muire Na Mainistreach	18049G
Nagle Rice PS	20229U
Nano Nagle School	19548G
Naomh Charthaigh	18325E
Pobalscoil Chorca Dhuibhne	91511O
Presentation SS Listowel	61380H
Presentation SS Miltown	61410N
Presentation SS Tralee	61450C
Presentation SS, Castleisland	61260U
Raheen NS	09304S
Realt Na Maidne	19846O
SN Sliabh a' Mhadra	03132I
Scoil An Fhaill Mor	12701W
Scoil Bhríde, Loreto NS	10050U
Scoil Chaitlin Naofa	16779K
Scoil Chorp Chríost	10775S
Scoil Chríost Ri Drumnacurra	18573A
Scoil Easa Dhuibhe	10501E
Scoil Eoin	05348S
Scoil Eoin Balloonagh	13615L
Scoil Iosagain	20196I
Scoil Mhuire Agus Ntreasa	20147S
Scoil Mhuire B&C Oilean Chiarrai	10394G
Scoil Mhuire Knocknagoshel	09708T
Scoil Mhuire Tobar Mui Doire	13530D
Scoil Mhuire, Brosna	18283O
Scoil Naomh Carthach	07990F
Scoil Naomh Micheal Sneem	08251S
Scoil Nuachabhail	10326M
Scoil Phobail Sliabh Luachra	91504R
Scoil Réalt Na Mara	12820H
SN An Chlocháin	14987H
SN An Chroi Naofa	16871V

School Name	Roll Number
SN An Chuilleanaig	17710C
SN An Fhossa	17012B
SN An Ghleanna An Daingean	11248A
SN Bhaile An Chrosaigh	09841V
SN Breandan Naofa Cathar Ui Mhodhrain	16898S
SN Cill Cuimin	17231N
SN Cill Lúraigh	18184M
SN Dar Earca	19483E
SN Eoin Baiste Garrai Na Dtor	19986H
SN Gleann Beithe	18414D
SN Lios Teilic	09260B
SN Mhuire Na Mbraithe Tralee	18247K
SN Muire Gan Smal Na Corra	08687J
SN Naomh Brid Dubhath	11067T
SN Naomh Eirc	17358O
SN Treasa Naofa Mxd	15033W
SN Uaimh Bhreanainn	17646T
Spa NS	18702I
St Brendan's NS Fenit	19659P
St Brigid's Presentation SS	61340S
St Finian's NS	16014A
St John's NS	20197K
St John's Parochial School	18233W
St Joseph's SS Doon Road	61220I
Tarbert Comprehensive School	81006S
Tarbert NS	18705O
The Black Valley NS	09837H
The Intermediate School	61360B
Tralee ETNS	20158A
Tulloha NS	01396J
Kildare	
Allenwood BNS	16813H
Almhaine NS	17567A
An Linbh Iosa	19597T
Árdscoil Na Tríonóide	68077S
Athy Model School	06209J
Ballymany Junior NS	19550Q
Ballyroe Central NS	19425N
Ballyshannon NS	15456E
Brannoxtown NS	16817P
Bunscoil Bhríde	18018S
Caragh NS	18654A
Castledermot Mixed NS	19786W
Coláiste Naomh Mhuire	61730I
Coole NS	18051Q
Gael-Cholaiste Chill Dara	68072I
Gaelscoil Átha Í	20192A
Gaelscoil Chill Dara	20023A
Holy Family SS	61682A
Kildare Town Community School	91530S
Killashee Multi-Denominational NS	20087D
Leixlip Community School	91371B
Maynooth BNS	17341U
MeáNScoil Iognáid Ris - Naas CBS	61710C
Mercy Convent PS, Naas, Co. Kildare	15040T
Newbridge College	61680T
Patrician SS	61681V
Presentation Girls PS	00779U
Primrose Hill NS	13819E
Rathcoffey NS	16845U
San Carlo Junior NS	19653D
San Carlo Senior NS	19875V
Saplings Special School Kill	20376K
Scoil Mhichil Naofa	18288B

School Name	Roll Number
Scoil An Linbh Iosa	18515J
Scoil Bhride Nurney	16345A
Scoil Bríd	20114D
Scoil Bride Athgarvan NS	13350B
Scoil Chearbhaill Uí Dhalaigh	19680G
Scoil Chóca Naofa	11976K
Scoil Chonnla Phadraig	15870O
Scoil Chorbain	17254C
Scoil Dara	61691B
Scoil Mhuire Community School	91372D
Scoil Na Mainistreach Oldtown Road	18551N
Scoil Na Naomh Uilig	20271T
Scoil Phadraig Naofa An Tomard	16705E
Scoil Uí Fhiaich	20058T
SN Baile Mhic Adaim	18092H
SN Baile Roibeaird	18430B
SN Bhride	19797E
SN Bride Lackagh	18179T
SN Brighde Kill	17662R
SN Brighde Ticknevin	17931S
SN Cianog Naofa	12998C
SN Cill Cae	17714K
SN Cloch Rinne	18093J
SN Coill Dubh	18096P
SN Ide	17650K
SN Mhuire C	18073D
SN Na Cloiche Moire	14643V
SN Na Maighdine Mhuire	18287W
SN Naomh Ioseph Baile Ailbhir	18378C
SN Naomh Lorcaín	18063A
SN Oilibhear Plunglead	17995V
SN Rath Mor	01821V
St Anne's NS Ardclough	17674B
St Brigid's NS Ballysax	16302F
St Brigid's NS Killcullen	19675N
St Brigid's PS Kildare Town	20427B
St Conleth's and Mary's NS	17872F
St Conleth's NS	18449W
St David's NS	11893G
St John's NS	12182B
St Joseph's NS	16706G
St Laurence's NS Crookstown	09414C
St Laurence's NS Sallins	08099P
St Patrick's BNS	19796C
St Patrick's NS Johnstownbridge	18130M
St Patrick's NS Morristown	13328I
St Paul's SS Monasterevin	61702D
St Wolstan's Community School	91505T
Straffan NS	18644U
Tiermohan NS	18666H
Two Mile House NS	17968S
Kilkenny	
Bennettsbridge Mixed	16406R
Carigeen NS	15340I
Church Hill Mixed NS	05927L
Clontubrid Mixed NS	16865D
Coláiste Éamann Rís	61510R
Community School Castlecomer	91360T
Goresbridge NS	19944O
Gowran NS	18064C
Graig Na Manach Buac	16311G
Kilkenny College	61570M
Kilkenny Mixed NS	17218V
Kilkenny School Project NS	19905E

School Name	Roll Number
Lisdowney NS	00788V
Loreto SS Granges Road	61580P
Meánscoil Na mBráithre Criostaí	61550G
Owning NS	16430O
Poulacapple NS	14181J
Ringville NS	06621P
SN San Nioclas	18660S
SN Shean Bhoth	17471K
Sapling's Special School Goresbridge	20377M
School of the Holy Spirit Special School	19523N
Scoil An Chroí Ró-Naofa	19930D
Scoil Bhride B7c	18078N
Scoil Iognaid De Ris	17867M
Scoil Lachtain	00796U
Scoil Mhuire Junior NS	20492M
Scoil Mhuire Presentation Convent	19925K
Scoil Naomh Ioseph Clinstown	18607O
Scoil San Lionard	16827S
Skeoughvosteenns	16140F
SN Baile An Fhasaigh	18257N
SN Bhríde	17566V
SN Chiaran Naofa	17589K
SN Cholmcille Inis Teog	17073V
SN Chrion Choill	17374M
SN Moin Ruadh Mixed	17590S
SN Muire Gan Smál Graigenamanagh	17224Q
SN Naomh Chiarain	17339K
SN Naomh Colmain Clarach Higginstown	16116I
SN Naomh Padraig Mixed	17628R
SN Naomh Padraig	16875G
SN Padraig Naofa De La Salle	17854D
SN Teampall Loiscithe	17675D
SN Tobair Eoin Baisde	17905R
St Aidan's NS	19344N
St Beacon's NS	19976E
St Brendan's Mixed NS	16485Q
St Brigid's College	61520U
St Brigid's NS	17174E
St Canice's Co-ed NS	19626A
St John's Senior NS	20011Q
St Kieran's Collegee	61560J
St Mary's NS	20272V
St Michael's NS Co Kilkenny	01300Q
St Patrick's School	19383A
St Senan's NS	20443W
The High Support Special School	20132F
The Rower Mixed NS	15160G
Wandesforde Mixed NS	14476F
Laois	
Abbeyleix South NS	14260F
Ardlios NS	18532J
Ballyadams NS	16617H
Bhride NS	18265M
Castletown Primary School	20169F
Cluain Eidhneach NS	18166K
Coláiste Íosagáin Portarlinton	68068R
Cosby NS	10544W
Gaelscoil An Tsli Dala	20224K
Kiladooley Mixed NS	12692B
Mhuire Fatima NS	18368W
Mountmellick Community School	91426A
Mountrath Community School	91550B
Muire Naofa Castlecuffe	17883K
Naomh Padraigs Doire Liaim Oig	18513F

School Name	Roll Number
Naomh Pius X NS	18433H
Our Ladys Meadow NS	20065Q
Paddock NS	13173F
Rathdomhnaigh NS	18075H
Rosenallis NS	17493U
Rush Hall Mixed NS	12231L
Scoil Abbain Cillin	17557U
Scoil An Chroi Ro Naofa	18014K
Scoil An Fhraoich Mhóir	18150S
Scoil Bhride Cluain Na Sli	20118L
Scoil Bhride Rathdowney	20071L
Scoil Chomhgain Naofa	17617M
Scoil Chríost Ri Presentation SS	63451O
Scoil Mhuire Muigheo	17271C
Scoil Mhuire Wolfhill	17441B
Scoil Naomh Abban	17555Q
Scoil Tíghearnach Naofa	19791P
SN Cuil An Tsudaire 2	18203N
SN Molaise	17695J
SN Naomh Colmcille Errill	18780F
SN Naomh Eoin Portarlinton	18641O
St Paul's NS Mountmellick	19369G
The Kolbe Special School	20100P
Leitrim	
Annaduff Mixed NS	13656C
Ardvarney Mixed NS	15116D
Aughawillan NS	16932P
Ballaghameehan NS	13908D
Ballinamore Community School	91519H
Carrigallen NS	16474L
Community School Carrick-on-Shannon	91496V
Differeen NS	17125O
Drumeela NS	14898I
Drumkeerin Central NS	19360L
Drumlease NS	15382B
Faitima NS	18741S
Gortletteragh Central	15960P
Largy NS	17206O
Leitrim Mixed NS	01125B
Masterson's NS	08390J
Scoil Mhuire Bornacoola	19554B
Scoil Mhuire Carrick-on-Shannon	20432R
SN Beal An Atha Mhoir	18656E
SN Mhic Diarmada	18589P
SN Naomh Mhuire Drumlea	19600F
St Patrick's NS	19423J
St Brid's	19519W
St Clare's Comprehensive School	81013P
St Clare's PS	17233R
St Hugh's NS	18181G
St Joseph's NS Aughavas	14339S
The Hunt NS	08673V
Limerick	
Ardpatrick NS	08419H
Ardscail Mhuire Corbally	64290V
Askeaton Senior NS	18530F
Athea NS	15685T
Athlaccá NS	17155A
Ballysteen NS	07900B
Bohermore NS	08342V
Caherline NS	15226K
Carnane Mixed NS	09132P
Carrickerry NS	11280T
Castleconnell NS	18161A

School Name	Roll Number
Catherine Mc Auley SP S	18692I
Crescent College Comprehensive	81014R
Donoughmore NS	16118M
Dromtrasna NS	16237U
Fedamore NS	14067L
Gaelscoil Chaladh An Treoigh	20148U
Gaelscoil O Doghair	19883U
Gaelscoil Sairseal	19956V
Garrydoolis NS	10991B
Glenbrohane NS	12613C
Glengurt NS	07317R
Glental Abbey School	64150F
Granagh NS	09927I
Hospital NS	19952N
John the Baptist Community School	91502N
Kilbehenny NS	17298W
Kildimo NS	06516S
Killoughteen NS	18708U
Knockea NS	06539H
Laurel Hill Coláiste FCJ	64270P
Le Cheile NS	20459O
Mahoonagh NS	11422N
Martinstown NS	09915B
Meenakilly NS	16239B
Milford Grange NSchool	19800N
Oola NS	17184H
Our Lady of Lourdes NS	19667O
Our Lady Queen of Peace School	17737W
Our Lady's Abbey	09296W
Pallaskenry NS	12631E
Rathkeale NS 2	10929T
Salesian Secondary College	64180O
Scoil Ailbhe Cathair Ailbhe	18030I
Scoil Aine Naofa Rath Caola	18177P
Scoil An Spioraid Naomh	15680J
Scoil Athain	16508C
Scoil Baile An Aird	17364J
Scoil Chaitriona	20233L
Scoil Chríost An Slanaitheoir	20094A
Scoil Cill Churnain	17871D
Scoil Cre Cumhra	17101A
Scoil Dean Cussen	20133H
Scoil Ide Corbally	18872K
Scoil Iosagain Sraid Seasnain	16910F
Scoil Mhuire & Íde	64170L
Scoil Mhuire Beal An Atha	18260C
Scoil Mhuire Effin	17299B
Scoil Moin A Lin	17937H
Scoil Na Mbearnan	16439J
Scoil Na Mbraithre Doon	16713D
Scoil Na Naoinean	16913L
Scoil Naomh Ide Ath na Fuinnseoige	16896O
Scoil Naomh Iosaf Adare	16712B
Scoil Naomh Iosef Dromcollogher	19966B
Scoil Neassain	14409N
Scoil Pádraig Naofa C	16444C
Scoil Phoil Naofa	19336O
Shanagolden NS	17438M
SN Ailbhe	07857D
SN Cnoc Aine	17212J
SN Cnoch A Deaga	11809O
SN Fiodhnach	04469C
SN Gleann Na Gcreabhar	17981K
SN Lios Na Groi	18516L

School Name	Roll Number
SN Loch Guir	07117J
SN Ma Rua	18600A
SN Molua B	14075K
SN Muire Na Heireann	19332G
SN Naomh Iosef	19272O
SN Toinn An Tairbh	18367U
St Augustine's Special School	19587Q
St Brigid's NS	19475F
St Clement's College	64220A
St John's Convent	06936R
St Joseph's Convent Newcastle West	12975N
St Mary's NS Island Road	20405O
St Michael's NS	12834S
St Michael's NS CBS grounds	15320C
St Munchin's College	64240G
Templeglantine NS	02358G
Longford	
Cloontagh Mixed NS	14650S
Colehill Mixed NS	14672F
Forgney NS	00860D
Gaelscoil Longfoirt	20083S
Killasonna Mixed NS	14300O
Lanesborough PS	18259R
Longford Mixed NS	12683A
Meánscoil Mhuire	63760E
Melview NS	07518E
Moyne Community School	91436D
Naomh Earnain NS	18258P
Saint Mels	19467G
Samhthann NS	17561L
Scoil Bhríde Glen	12136R
Scoil Mhuire NS	19987J
SN An Leana Mor	05115S
SN Mhuire Cluain De Rath	18733T
SN Naomh Colmcille Aughnaccliffe	19296F
SN Naomh Treasa Clontumper	19279F
St Bernard's Mixed NS	15122V
St Christopher's SS	19429V
St John's NS Ballinallee Road	13313S
St Matthew's Mixed NS	20128O
St Mel's College	63750B
St Patrick's NS Longford	19353O
Tashinny NS	10223C
Whitehall NS	14049J
Louth	
Ardee ETNS	20171P
Ardee Monastery	17124M
Aston Village ETNS	20294I
Baile An Phusta NS	01554B
Bellurgan NS	16249E
Colaiste Rís	63880O
Drogheda Grammar School	63870L
Dromin NS	06576N
Dromiskin Mixed NS	16760M
Dundalk Grammar School	63920A
Kilcurley Mixed NS	16749B
Knockbridge Mixed NS	15101N
Muire Na nGael NS	19598V
Our Lady's College	63850F
Rathmullen NS	19479N
Réalt Na Mara School	20339E
SN San Nioclas Tigh Banan	18126V
Sacred Heart SS Sunnyside	63860I
Scoil na gCreagacha Dubha	15285D

School Name	Roll Number
Scoil Bhríde Lann Leire	18148I
Scoil Dairbhre Mixed	17315T
Scoil Fhursa	17550G
Scoil na mBratihre SN	17059E
Scoil Naomh Fainche	14578N
Scoil Phadraig Naofa Kilcurry	18186Q
SN an tSlanaitheora B	19246N
SN Ard Mhuire C	19215C
SN Brighde Fochaird	18391R
SN Chaoimhin Naofa	18019U
SN Chill Sarain	14207B
SN Colmcille	01434O
SN Muire Na Trocaire	18099V
SN Muire Pairc Na Rian	18101F
SN Mullach Bui	02793B
SN Naomh Fhionain	17952D
SN Naomh Peadar	11072M
SN Padraig Baile Ui Ir	19223B
SN Padraig Naofa B Bothar Brugha	17949O
SN Tigh An Iubhair	18635T
SN Tulach Aluinn	17726R
St Brigid's Special School	18772G
St Joseph's NS Avenue Road	19673J
St Joseph's SS Newfoundwell Road	63840C
St Louis SS	63910U
St Mary's Parish PS	20205G
St Mochta's NS	01553W
St Oliver's NS Carlingford	02322I
St Paul's Senior NS	19678T
St Vincent's SS Seatown Place	63900R
Tallonstown NS	02745N
Walshestown NS	03787L
Mayo	
Ballindine BNS	01676P
Ballinrobe Community School	91462E
Ballyhaunis Community School	91461C
Ballyvary Central NS	19402B
Barnacarroil Central NS	19710M
Barnatra NS	14188A
Beacan Mixed NS	13659I
Beannchor NS	13684H
Behy NS	11725I
Bofield Mixed NS	14418O
Brackloon NS	04796R
Burriscarra NS	05756K
Carracastle Central NS	19651W
Carrakennedy NS	15866A
Cill Mhor Iorrais	14258S
Claremorris BNS	19915H
Cloghans NS	16170O
Cloonlyon NS	12936D
Coláiste Cholmáin Claremorris	64610N
Coláiste Muire	64691Q
Convent of Mercy	18694M
Cooneal NS	17209U
Craggagh NS	12467R
Cullens NS	07054L
Dookinella NS	14873P
Gaelscoil Na Cruaiche	20046M
Gaelscoil na gCeithre Maol	20084U
Garracloon NS	06852L
Geesala Central School	19776T
Glencorribns	17874J
Gortjordan NS	14534Q

School Name	Roll Number
Holy Angels NS, Clogher	17482P
Holy Trinity NS Newport Road	08302J
Irishtown NS	14808E
Jesus & Mary SS Gortnor Abbey	64630T
Killala NS	16811D
Killasser NS	16269K
Killocraun NS	14865Q
Kilmovee In S	13080V
Kinaffe NS	16173U
Knock NS	16122D
Knockanillo NS	16562I
Lecanvey NS	13797U
Lehinch NS	05120L
Lisaniska NS	16021U
Meelickmore NS	12173A
Mount Pleasant NS	13500R
Mount St Michael Convent of Mercy	64620Q
Muirisc NS	16832L
Our Lady's SS Belmullet	64570E
Partry NS	15007V
SN Sheamais	15113U
Sacred Heart School	64710R
St Michael's NS	12792F
Sancta Maria College Louisburgh	64660F
Scoil Chomain Naofa	17082W
Scoil na gCalíní	02912G
Scoil Naomh Brid Ballycastle	14290O
Scoil Naomh Feichin	19488O
Scoil Neifinn	20431P
Scoil Phádraig	20230F
Scoil Raifteiri	19832D
SN Muine Chonallain	13667H
SN Achadh An Ghlaisin	18594I
SN An tSraith	13383Q
SN Athracht Naofa Buach	18003F
SN Beal An Mhuirthead	17923T
SN Beannchair	18175L
SN Ceathru An Chlochar	12816Q
SN Cill Mhuire	14400S
SN Cnoc Ruscaighe	18712L
SN Coill A Tsidheain	12626L
SN Coill An Bhaile	14064F
SN Colm Naofa	17682A
SN Croi Muire	17727T
SN Dhumha Thuama	14193Q
SN Dumhach	18082E
SN Faitche	13555T
SN Gleann A Chaisil	13222P
SN Gleann Na Muaidhe	13882L
SN Linn Cille	16904K
SN Mainistir Muigheo	14205U
SN Muire Gan Smál Ceathrú Thaidgh	15032U
SN Na Craobhaighe	14671D
SN Naomh Brid C	18503C
SN Naomh Pádraig B	18506I
SN Naomh Pádraig Corrabheagain	12206M
SN Pádraig Naofa Louisburgh	20037L
SN Peadair Agus Pol	18848N
SN Pol A Tsomais	16283E
SN Realt Na Mara Mulranny	17176I
SN Tamhnighan Fheadha	12938H
SN Teach Caoin	17301I
SN Tighearnain Naofa	17098O
SN Toin Na Gaoithe	16113C

School Name	Roll Number
SN Uileog De Burca	19972T
St Anthony's Special School	19248R
St Brid's Special School	19375B
St Colman's NS	19798G
St Columba's NS Inisturk	13174H
St Dymrna's Special School	19387I
St Gerald's College	64580H
St John's NS	15539I
St Joseph's NS Ballinrobe	20089H
St Joseph's SS	64640W
St Louis Community School	91494R
St Mary's SS Ballina	64520M
St Patrick's NS Clare Island	13311O
St Patrick's NS	17129W
St Peter's NS Snugboro	19916J
Valley NS	16379R
Meath	
Aine Naofa NS	00883P
Ashbourne Community School	91495T
Ashbourne ETNS	20396Q
Athboy Community School	91517D
Ballinlough NS Kells	09238I
Boyne Community School	91508C
Bride Naofa NS	15104T
Carricleck NS	14348T
Castlejordan Central NS	19300Q
Castletown NS	19292U
Dangan Mixed NS	19018A
Drumbaragh NS	10801Q
Dunboyne Junior NS	20032B
Dunboyne Senior NS	20033D
Eureka SS	64410F
Flowerfield NS	12788O
Gaelscoil Eanna	19725C
Gaelscoil Na Cille	19779C
Kells Parochial NS	05062A
Kilbegns	11039O
Killyon NS	07120V
Kilmainham Wood NS	17123K
Kilmessan Mixed NS	04210H
Kilskyre Mixed NS	01421F
Loreto SS St Michael's	64370T
Navan ETNS	20164S
Newtown NS Ardee	03275H
Ogowney NS	17623H
Oldcastle Mixed NS	12488C
Scoil An Spioraid Naoimh	20017F
Scoil Bhride	16825O
Scoil Mhuire Ashbourne	19768U
Scoil Mhuire Carlanstown	18132Q
Scoil Mhuire Convent of Mercy	64450R
Scoil Mhuire NS	11978O
Scoil Na Tríonoide Naofa	18106P
Scoil Na Rithe	19867W
Scoil Naomh Barra	19253K
Scoil Oilibheir Naofa Coillcluana	17652O
SN Aitinn Bhui	17741N
SN Bhrighde Meath Hill	17220I
SN Caitriona Naofa Baile Oirthir	18174J
SN Colmcille Scrin	17521W
SN Cros Ban	17705J
SN Deaglain	19486K
SN Dun Uabhair	17856H
SN Finin Naofa	16067V

School Name	Roll Number
SN Mhuire Baile Ui Earain	18037W
SN Mhuire Cui Ronain	18429Q
SN Mhuire Ma Nealta	17213L
SN Mhuire Naofa	17742P
SN Naomh Aine	17946I
SN Naomh Padraig Baile Bacuin	02905J
SN Naomh Padraig Slane	18040L
SN Naomh Padraig Stamullen	18044T
SN Nmh Sheosamh	17986U
SN Pheadair Agus Phoil	16143L
SN Rath Beagain	18448U
St Ciaran's Community School	91456J
St Finian NS	18195R
St Joseph's SS, Navan	64360Q
St Louis NS	15483H
St Mary's PS Enfield	17821L
St Nicholas PS	16655P
St Oliver Plunkett NS	19476H
St Patrick's Classical School	64350N
St Patrick's NS Trim	13775K
St Paul's NS	20215J
St Paul's NS Abbeylands	19671F
Trim ETNS	20444B
Monaghan	
Annalitten NS	13632L
Annyalla NS	16842O
Ballybay Central NS	19884W
Castleblayney Cent NS	19737J
Corcaghan NS	16129R
Corr A Chrainn NS	18028V
Drumacruttin NS	10282S
Drumcorrin NS	19703P
Edenmore NS	20337A
Gaelscoil Lorgan	20327U
Gaelscoil Ultain	19936P
Killeevan Central NS	19364T
Latnamard NS	16769H
Latton NS	19434O
Monaghan Collegiate School	64830E
Monaghan Model School	07751K
Naomh Oliver Plunkett	19469K
Out Lady's SS Castleblayney	64770M
Patrician High School	64750G
Rockcorry NS	06028F
Scoil Bhlaithin Iosa	16968N
Scoil Bhrighde Silverstream	18256L
Scoil Bride Mullaghrafferty	19780K
Scoil Eanna Ballybay	20174V
Scoil Mhichil Rackwallace	16954C
Scoil Mhuire BNS	17686I
Scoil Mhuire Glasloch	18401R
Scoil Mhuire Machaire Airne	09186P
Scoil Naoimh Eanna	05501A
Scoil Naomh Mhuire Cluain Tiobraid	18539A
Scoil Phadraig Garrann	19036C
Scoil Rois	19857T
SN Ath Na Bh-Fearcon	18023L
SN Cholmcille Taithe Bui	18820O
SN Comhghall	17776J
St Dymrna's NS	19738L
St Joseph's BNS	17099Q
St Joseph's NS Knockatallon	20067U
St Louis GNS	00359V
St Louis Infant School	18494E

School Name	Roll Number
St Louis SS	64820B
St Louis SS Carrickmacross	64760J
St Macartan's College	64810V
St Mary's BNS	17150N
St Michael's NS	15142E
St Tiarnach's PS	20120V
The Billis NS	20246U
Threemilehouse NS	19162H
Offaly	
Arden BNS	19713S
Charleville NS	10353P
Clonaghadoo NS	16160L
Clonbullogue NS	15325M
Cloneyhurke NS	15923J
Colaiste Choilm	65610S
Croinchoill NS	18267Q
Daingean NS	16620T
Edenderry 2 NS	15638K
Gaelscoil An Eiscir Riada	19990V
Gaelscoil Éadan Doire	20332N
Gallen Community School	91515W
Geashill 1 NS	09191I
Killina Presentation SS	65630B
Mercy PS	03220F
Mount Bolus NS	15395K
Naomh Mhuire NS	17616K
SN Seosamh Gortnamona	07191V
SN Sheosaimh Naofa	17637S
Scoil Bhríde	13118U
Scoil Colmain Naofa	17746A
Scoil Mhuire Agus Chormaic	20387P
Scoil Mhuire Tullamore	18057F
SN An Cillin Birr	17179O
SN Caoimhin Naofa	18331W
SN Chiarain Naofa Clonmacnois NS	17188P
SN Mhuire Bainrioghan	17336E
SN Mhuire Cluain Na Ngamhain	18115Q
SN Mhuire Cul An Airne	18795S
SN Muire Naofa	17069H
SN Naomh Brighde Buach	18524K
SN Naomh Cholumchille	17508H
SN Naomh Eoin An Rath	02413L
SN Naomh Philomena	16928B
SN Naomh Seosamh	18797W
SN Osmann	07949I
St Brendan's Monastery	12370C
St Ciaran's Mixed NS	16435B
St Cronan's Mixed NS	12294M
St Cynoc's NS	20289P
St Mary's NS Cloghan	20068W
St Mary's SS Edenderry	65582Q
St Brendan's Community School	91491L
Tullamore ETNS	20189L
Roscommon	
Ballinlough NS Roscommon	11943S
Ballintleva NS	18729F
Ballyforan Mixed NS	01866U
Camcloon NS	15980V
Carrick Mixed NS	16009H
Castlereagh Community School	91493P
CBS Roscommon	65080P
Clonown NS	16427C
Cloonbonniff NS	11242L
Clooncagh NS	16291D

School Name	Roll Number
Clooneyquinn NS	18027T
Cloonfour NS	13498K
Dangan NS	17571O
Don NS	15255R
Fairymount NS	15425Q
Gaelscoil De Híde Cnoc Na Cruibe	20126K
Grange NS	15584N
Kilteevan NS	14966W
Lisacul NS	13047A
Lisaniskey NS	14356S
Lismoil NS	11466K
MNS Cluain Tuaiscirt	18116S
Mount Talbot NS	14056G
Naomh Atrachta	18182I
Our Lady of Mount Carmel NS	04800F
Scoil Mhuire Gan Smal Fiobhach Diseart	18005J
Scoil Mhuire Strokestown	65100S
Scoil Micheal Naofa	19789F
SN An Gleann Duibh	18626S
SN Baile Ui Fhídhne	18432F
SN Cill Trostain	17353E
SN Cluain Na Cille	18395C
SN Cruachain	18012G
SN Mhuire Ballyleague	18061T
SN Mhuire Kilmurray	17492S
SN Mhuire Lourdes	18536R
SN Naomh Ceitheach	16815L
SN Naomh Eoin Lecarrow	18272J
SN Naomh Mhuire Drumboylan	17709R
SN Naomh Padraig Beal Atha Fearnan	13978B
SN Naomh Padraig Beal Atha na mBuilli	15045G
SN Naomh Padraig Scrabbagh NS	11201U
SN Naomh Seosamh Ballymurray	12964I
SN O Dubhlain	17849K
SN Paroisteach	17329H
SN Pol Naofa	01086R
SN Ronain Caislean Samsain	12003V
St Bride's NS, Ballintubber	16334S
St Bridget's NS	19815D
St Ciaran's NS	19368E
St Joseph's BNS	15628H
St Mary's Primary	17808T
St Nathy's College	68067P
Taughmaconnell NS	15614T
Threen NS	10967E
Tisrara NS	18165I
Sligo	
Ardkeerin NS	15217J
Ballintogher NS	02013S
Carbury NS	19495L
Carn NS	12537M
Carraroe NS	14636B
Cliffoney NS	16136O
Cloonacool NS	04802J
Coolbock NS	16781U
Dromore West Central NS	19688W
Gaelscoil Chnoc Na Re	20044I
Holy Family School Tubbercurry	20019J
Kilglass NS	15571E
Killaville NS	15431L
Killeenduff NS	09691F
Kilross NS	16044J
Leaffoney NS	15496Q
Moylough NS	13831R

School Name	Roll Number
Our Lady of Mercy NS Pearse Road	19985F
Out Lady's NS Banada	20385L
Owenbegns	03924S
Scoil Chríost Rí, Enniscrone	13940W
Scoil Croi Naofa	20113B
Scoil Eoin Naofa	19974A
Scoil Mhuire Agus Iosaf	20122C
Scoil Naomh Aodain	19392B
Sligo Project School	19910U
SN Aodain	18366S
SN Baile An Luig	17599N
SN Bhride Carn	17725P
SN Clochog	18543O
SN Cnoc Mionna	18334F
SN Cul Fada	18298E
SN Eoin Naofa	17838F
SN Lissara Naofa	17774F
SN Mhuire Caislean Geal	15337T
SN Molaoise	18575E
SN Muire Gan Smál Cill Ruis Lochtar	18580U
SN Muire Gan Smál Druimeanna	18029A
SN Mullach Rua	17967Q
SN Naithi Naofa	04487E
SN Naomh Iosef Ard Chill	18592E
SN Naomh Mhuire Ceis Chorainn	15342M
SN Naomh Sheosaimh	16927W
SN Padraig Naofa Ballyweelin	17021C
SN Padraig Naofa Geevagh	17283J
SN Pairc Ard	18715R
SN Realt Na Mara Rosses Point	17641J
SN Ronain Naofa	12767G
Sooev NS	18053U
St Attracta's Community School	91512Q
St Brendan's NS Cartron	19826I
St Cecilia's School	19206B
St Edward's NS	17277O
St Mary's College Ballysadare	65130E
St Patrick's NS Coolagh	19942K
Stokane NS	14051T
Summerhill College	65170Q
Ursuline College Sligo	65180T
Tipperary	
Annacarty NS	18528S
Ardfinnan NS	16077B
Árdscoil Na mBráithre	65320J
Ballycahill NS	01569O
Ballylooby NS	18582B
Ballyneale NS	18085K
Ballytarsna NS	15970S
Bansha NS	19689B
Barnane NS	18379E
Boher NS Ballina	09190G
C.B.S. Thurles	65450W
Carrig NS Ballycommon	16276H
Cashel Community School	91497A
Cashel Deanery	19696V
Castle Iny NS	17653Q
Clochar Na Toirbhirte Presentation Convent	11872V
Clonmore NS	12540B
Cloughjordan No 1 NS	19422H
Eochaille Ara NS	16810B
Gaelscoil Charraig Na Siuire	20085W
Gaelscoil Durlas Eile	19968F
Gaile NS	15299O

School Name	Roll Number
Grangemockler NS	18501V
Gurtagarry NS	11384I
Holy Family NS, Templeuohy	16250M
Holy Trinity NS, Rocklow Road	20355C
Kiladangan NS	06658P
Killusty NS	16111V
Lisnamrock NS	11453B
Lisronagh NS	06789H
Lisvernane NS	19294B
Loreto SS Coleville Rd	65330M
Monard NS	00606M
Mount Bruis NS	15157R
Moyglass NS	04075E
Naomh Padraig Junior	19879G
Naomh Padraig Senior	19880O
New Inn BNS	05144C
Newtown NS Solohead	08316U
Our Lady's SS	65440T
Patrician Presentation	65350S
Powerstown NS	17779P
Presentation PS Clonmel	12180U
Presentation SS Ballingarry	65240L
Presentation SS Thurles	65460C
Rearcross NS	12124K
Rockwell College	65300D
Sacred Heart PS	18435L
St Cronan's NS	13867P
San Isador	02670I
Scoil Angela	18135W
Scoil Aonghusa	19615S
Scoil Cormaic	19230V
Scoil Iosagain Upperchurch Central NS	19677R
Scoil Mhuire Caislean Nua	18538V
Scoil Mhuire Gan Smál	13404V
Scoil Mhuire Greenhill	65280A
Scoil Mhuire Lismackin	19640R
Scoil Mochaomhog	16211C
Scoil na mBraithre Nenagh	16727O
Scoil na mBraithre Tipperary	17276M
Scoil Naomh Cualán	20451V
Shronell NS	15008A
Slieveardagh NS	11470B
SN An Droma	18322V
SN Baile An Iubhair	17511T
SN Baile na Hinse	17296S
SN Buirgheas	18164G
SN Chaoimhghin	18343G
SN Chluainin	17694H
SN Chuirt Doighte	17783G
SN Cill Barfhionn	17237C
SN Cill Ruadhain Nenagh	18369B
SN Cill Siolain	18486F
SN Cleireachain	17486A
SN Gort Na Huaighe	17580P
SN Iosef Naofa Cor An Bhile	18345K
SN Iosef Naofa Eaglais	18443K
SN Iosef Naofa Templemore	17731K
SN Leamhach	18213Q
SN Mhuire Na Trocaire	10120P
SN Michil Naofa Mullinahone	15362S
SN Na Hinse	18350D
SN Naomh Sheosamh Toomevara	17498H
SN Phadraig Naofa Pairc Na Coille	17850S
SN Rath Chaomhghin	17542H

School Name	Roll Number
SN Rois Mhoir	17620B
SN Teampall Doire	18557C
St Anne's SS	65500L
St Anne's Special School	19370O
St Colmcille's PS	16979S
St Francis NS Garryshane	18512D
St John the Baptist	19692N
St John the Baptist Boys School	20155R
St Joseph's CBS Summerhill	65370B
St Joseph's PS	09432E
St Mary's Junior BNS	16344V
St Mary's No. 2 NS Nenagh	15778D
St Mary's NS Templemore	15795D
St Mary's SS Nenagh	65380E
St Oliver Plunkett's NS Heywood Road	19645E
St Peter and Paul C.B.S.	16729S
The Abbey School	65490L
Thomastown NS	04620D
Tipperary GNS	01862M
Tipperary Junior BNS	01285A
Ursuline SS Thurles	65470F
Waterford	
Aglish NS	01395H
An Teaghlaigh Naofa	18509O
Ard Scoil na nDeise	64900W
Ballycurrane NS	07441S
Ballyduff NS Kilmeaden	13635R
Ballymacarbry NS	19345P
Bun Scoil Bhothar Na Naomh	20076V
Carrickbegns	11969N
Christ Church NS	18681D
Fionnabhair NS	17535K
Gaelcholaiste Phort Lairge	68078U
Gaelscoil Philip Barún	19885B
Glenbegns	15318P
Knockanore NS	17522B
Light of Christ NS	17525H
Mount Sion CBS SS	64930I
Mount Sion PS	19947U
Our Lady of Mercy NS Stradbally	13020D
Our Lady of Mercy SS Ozanam St.	64971W
Our Lady of Mercy Senior PS	18689T
Presentation PS Slievekeale Road	19955T
Presentation SS Cannon Street	64970U
Rathgormack BNS	15963V
Scoil Naomh Eoin Le Dia	18793O
Scoil Choill Mhic Thomaisin	20170N
Scoil Mhuire	14679T
Scoil na mBráithre Dungarvan	64880T
Scoil Naomh Seosamh Dungarvan	16732H
SN Aine Naofa Seafield	18167M
SN An Chlais Mhor	02889O
SN Cill Bhriain	17643N
SN Cill Rosanta	01711O
SN Cnoc Machan	18077L
SN Deaglan	16976M
SN Dun Aill	17536M
SN Faiche Liag	18380M
SN Lios Mor Mochuda	14164J
SN Muire Magh Deilge	18321T
SN Na Bhfiodh	17570M
SN Na Cille	16748W
SN Na Leanai	16818R
SN Na Rinne	17295Q

School Name	Roll Number
SN Naomh Deaglan	18048E
SN Ursula Naofa	12535I
St Angela's Ursuline Convent	64990D
St Augustine's College	64890W
St John's Special School	19282R
St Joseph's Special School Parnell Street	19244J
St Martin's Special School	19108B
St Mary's NS Grange	17997C
St Mar's NS Touraneena	18779U
St Saviour's NS	19511G
Villierstown NS	07737Q
Waterpark College	64940L
Waterpark NS	20143K
Whitechurch NS	18108T
Westmeath	
Athlone Mixed NS	16092U
Baile Coireil NS	16914N
Baile na gCellach NS	16868J
Ballinagore Mixed NS	16340N
Ballinahowen NS	19632S
Ballynacargy NS	01731U
Castlepollard Mixed NS	05513H
Castlepollard Parocn S	10857U
Cill Cleithe NS	17806P
Cluain Buinne NS	17102C
Cluain Maolain NS	17089N
Colaiste Mhuire	63270K
Corr Na Madadh NS	17903N
Crowenstown NS	02263S
Diarmada NS	18036U
Drumraney NS	13571R
Dysart NS	17290G
Earnain Mixed NS	18598Q
Kilcumeragh NS	16961W
Loch An Ghair NS	18812P
Loreto College Mullingar	63290Q
Meán Scoil An Chlochair	63221U
Mhuire NS	18484B
Milltownpass NS	16304J
Moate Community School	91501L
Mullingar ETNS	20188J
Naomh Clar NS	18505G
Naomh Micheal NS	17606H
Naomh Muire NS	17743R
Naomh Tomas NS	18591C
Our Lady's Bower	63210P
Rath Eoghan NS	17189R
Scoil na gCeithre Máistrí	19948W
Scoil Mhuire Teach Munna	18533L
SN An Chuil	03936C
SN Ard Cianain	17054R
SN Chruimin Naofa	19350I
SN Naomh Fiontan	18193N
SN Phadraig Baile Eamainn	08100U
SN Phoil Naofa	18405C
St Aloysius College the Park	63191O
St Brigid's PS an Bhun Scoil	15512L
St Colmcille's NS	16838A
St Feighan's Mixed NS	14450K
St Finian's College, Mullingar	63280N
St Joseph's SS Rochfortbridge	63310T
St Mary's NS Gracepark Road	20073P
St Oliver Plunkett BNS	17167H
St Peter's Senior NS	07722D

School Name	Roll Number
Streamstown Mixed NS	15291V
Tang NS	08037Q
Wilson's Hospital School	63300Q
Wexford	
Boolavogue NS	18336J
Bun Scoil Loreto	16145P
Caim NS	11380A
Camolin NS	15354T
Castlebridge NS	18707S
Christian Brothers SS Thomas St	63640R
Clogue NS	15948C
Clongeen Mixed NS	16992K
Colaiste Bride Enniscorthy	63570W
Curraclloe NS	14492D
Cushinstown NS	16673R
FCJ SS	63550Q
Gaelscoil Loch Garman	20008E
Gaelscoil Mhoshiolog	20165U
Glenbrien NS	13299E
Good Counsel College	63610I
Gorey Central School	19419S
Gorey Community School	91492N
Kilnamanagh NS	13999J
Kiltealy NS	16833N
Loreto SS Spawell Road	63660A
Meánscoil Gharman	68080H
Monaseed NS	15937U
Naomh Maodhog NS	19890R
Oulart NS	15419V
Presentation SS Grogans Road	63661C
Raheen NS	18191J
Ramsgrange Community School	91431Q
Rathangan NS	19317K
Rathgarogue NS	16023B
Riverchapel NS	15367F
SN Seosamh Naofa	17800D
Scoil Eoin Baiste	17734Q
Scoil Ghormáin Naofa	17768K
Scoil Mhuire Broadway	19741A
Scoil Mhuire Coolcotts	19739N
Scoil Mhuire Horeswood	19604N
Screen NS	18839M
SN An Ghleanna	17005E
SN Baile An Phiarsaigh	18558E
SN Baile Muirne	05070W
SN Bearna Na H-Aille	16828U
SN Bhaile Mhuirne	18684J
SN Bhantiarna Lourdes	03633H
SN Caislean Docharraill	17519M
SN Chaomhain Torrchoill	17235V
SN Clochar Mhuire	17373K
SN Clochar Mhuire Rosslare	16879O
SN Coill An Iarainn	17858L
SN Mhuire Baile Bearna	17913Q
SN Mhuire Danescastle	14254K
SN Mhuire Tagoat	17769M
SN Naomh Padraig Bearna Chle	01782O
SN Nmh Brighde	16841M
SN Nmh Seosaimh	17554O
SN Padraig Craanford	17354G
SN Phadraig Crossabeg	17017L
SN Rath An Iubhair	17707N
St Aidan's Parish School	20003R
St Colman's NS	15962T

School Name	Roll Number
St Edan's NS	18714P
St Joseph's NS Donard	17638U
St Mary's CBS Millpark Road	63560T
St Mary's SS Irishtown	63620L
St Patrick's NS Ballyroebuck NS	12841P
St Patrick's Special Schooll	19240B
St Peter's College	63650U
St Senan's NS	08221J
Tombrack NS	15940J
Wicklow	
All Saints' NS	14972R
An Chroi Ro Naofa NS	18473T
Annacurra NS	17304O
Arklow CBS	61770U
Blessington Educate Together	20242M
Blessington No. 1 School	06176U
Brittas Bay Mixed NS	11372B
Caoimhin Naofa NS	16924Q
Carysfort Mixed NS	14045B
Coolfancy NS	18118W
Cronan Naofa NS	16872A
Delgany NS	13679O
Donard NS	17920N
Donoughmore NS	12413R
East Glendalough School	81016V
Gael Scoil Na Lochanna	20243O
Gaelscoil Chill Mhantáin	20045K
Gaelscoil na gCloch Liath	20301C
Hollywood NS	18054W
Holy Rosary School	17576B
Jonathan Swift NS	14269A
Kilcommon NS	18033O
Kiltegan NS	12688K
Lacken Mixed NS	10111O
Manor Kilbride NS	10683N
Marino School NS	18281K
Moin An Bhealaigh NS	10131U
Moneystown NS	13246G
Naomh Brid NS	18470N
Padraig Naofa NS Avoca	18198A
Padraig Naofa NS St Patrick's Road	15676S
Powerscourt NS	09760V
Presentation College Putland Road	61800D
Rathdrum BNS	17265H
Scoil Chualann	19584K
Scoil Naomh Caoimhghin	17720F
Scoil Nioclais Naofa	17810G
Scoil Padraig Naofa	17537O
Scoil San Eoin	14829M
Shillelagh No 1 NS	15359G
SN Muire Is Gearard	17223O
SN Muire Mixed	17500O
SN Padraig Naofa Curtlestown	18357R
St Andrew's NS Bray	13597M
St Brigid's NS	17907V
St Catherine's Special School	19522L
St Francis NS	19734D
St Gerard's School	61811I
St John's SNS	20469R
St Joseph's NS Templarainey	17181B
St Laurence's NS Roundwood	16634H
St Mary's College St Mary's Road	61780A
St Peter's PS	18464S
St Saviour's NS	12529N

School Name	Roll Number
Stratford Lodge NS	19339U
Temple Carrig School	68081J
The Glebe NS Wicklow	14398L
Wicklow ETNS	20178G
Woodbrook College	61790D

5.3.3 Non-reporting Public Bodies

The number of public bodies that are required to report in their own right changes from year to year due to organisational changes within the sector. Some smaller organisations that were requested to report for 2016 did not report data in their own right, but their data was reported via 'parent' organisations, while others may no longer come under the definition of a public body, as set out in SI 426 of 2014. Such organisations are not listed here. These organisational changes are the subject of continual review by SEAI.

An Chéim Computer Services Ltd
An Foras Teanga - Foras na Gaeilge
Beaumont Hospital
Grangegorman Development Agency
Irish Bank Resolution Corporation Limited
Irish Greyhound Board / Bord na gCon
New Ross Port Company
Nua Healthcare Services
Professional Development Service for Teachers
St. Angela's College Sligo

Appendix 1 – Reporting Methodology

The key principles of the reporting methodology are:

- Individual public bodies report annually for the previous year. There is a defined reporting window during which public bodies must report and the cycle repeats annually.
- Public bodies report all of their energy consumption for all fuel types (electricity, thermal fuels and transport fuels) at an organisational level.
- Public bodies report baseline data on a once off basis.
- Public bodies then report their energy consumption annually for the previous year.
- For electricity & natural gas, all public bodies have to do is submit their meter numbers once to SEAI (MPRNs & GPRNs) and then validate them annually. SEAI accesses the energy consumption data corresponding to these meter numbers directly from the regulated meter operators (ESB MRSO and Gas Networks Ireland) each year.
- For all non-network connected energy sources (e.g. heating oils, LPG, solid fuels, diesel), public bodies self-report their consumption subtotals directly to SEAI.
- Each year, public bodies must self-report an activity metric that best corresponds with their energy usage.

The next reporting cycle will commence in November 2017. All public bodies will be required to report their 2017 consumption before the cycle ends in late April 2018; they will also have opportunity to review/edit their previously reported data.

Measuring Energy Savings

In order to quantify energy savings, changes in given parameters that are related to energy use must be measured. The SEAI system uses energy performance indicators (EnPIs) to measure each organisation's energy performance. This enables organisations to determine how efficiently they are using energy because it accounts for changes in the activity level related to the energy use – or 'activity metric' – of each organisation.

Each year, an EnPI is calculated by dividing the organisation's total primary energy requirement (TPER) by an activity metric.

The primary indicator for tracking each organisation's energy savings is the change in the organisation's EnPI each year and is expressed as a percentage savings between a baseline period and the current year (i.e. 2016). This is a workable methodology which accounts for an organisation's energy performance as well as its energy consumption and enables public bodies to determine if energy is being used efficiently or not in accordance with the definitions of 'energy efficiency' and 'energy savings' used by the European Commission.

Baselines

The progress made by an organisation in meeting its 2020 target is measured against a historical baseline. Organisations have a choice of baseline period. Public bodies can choose whichever of the following baseline periods suits them best: 2001-2005 (averaged); 2006-2008 (averaged); 2009 (single year). 2009 is the default baseline for public bodies. Schools can choose any of these baselines, or any single year up to and including 2013 (default).

Data Verification

The validity of submitted data is checked in two ways:

- Automated Data Verification Assessment (DVA), which consists of validation rules built into the reporting software to check for errors when entering inputs.
- DVAs undertaken by SEAI-appointed assessors, which entail assessments of specific aspects of submissions. A DVA of a public body's submission consists of direct interaction(s) between an SEAI assessor and the public body to verify that the data submitted falls within certain acceptability criteria.

The purpose of the data verification system is threefold:

- Ensure, insofar as practical, that the data which is submitted is robust and verifiable;
- Provide an incentive for organisations to submit accurate data;
- Provide a means for supporting organisations in improving how they gather and submit M&R data and for providing feedback on the M&R system.

The data verification process on the 2016 data involved an assessment of 19% of public bodies.

For more information on
Monitoring and Reporting,
visit www.seai.ie/publicsector
or contact publicsector@seai.ie

SEAI would like to thank the Meter Registration System Operators of ESB Networks and Gas Networks Ireland for their continued support in providing the data required to measure and monitor energy efficiency.

Appendix 2 – Glossary

Activity Metric

A measure of the activity that a public body undertakes. Ideally, the activity metric should quantify the key activities that affect energy use, e.g. for organisations in which most of the energy consumption is in buildings, good activity metrics are: the total useful floor area that is heated or air conditioned; the number of people that benefit from the energy service provided (e.g. number of employees for office-based organisations, number of students for universities etc.)

Baseline

The period from which an organisation's progress towards the 2020 target is tracked. There are three alternative baselines for public bodies. Public bodies can choose whichever one suits them best: 2001-2005 (averaged); 2006-2008 (averaged); 2009 (single year). 2009 is the default baseline. Schools can choose any of these baselines, or any single year up to and including 2013 (default).

BMS

Building management systems or building energy management systems provide control and monitoring of energy services. With efficient control of energy using plant and equipment, running and maintenance costs can be reduced and comfort levels maintained. Systems can be set up to monitor and report on energy usage, costs and billing.

EnPI

Energy Performance Indicator. (EnPI) is a way of measuring an organisation's energy performance. Each year, an EnPI is calculated by dividing the organisation's total primary energy requirement (TPER) by an activity metric.

GPRN

Gas Point Registration Number is a unique reference number assigned to every gas point on the natural gas network.

MPRN

Meter Point Reference Number is a unique 11-digit number assigned to every single electricity connection and meter in the country.

Public Body

For the purposes of the NEEAP target, public bodies are considered to encompass the Civil Service, commercial and non-commercial State Bodies, State-owned financial institutions, the Defence Forces, An Garda Síochána, Health Service Executive hospitals and other facilities, Local and Regional Authorities, schools and universities.

Thermal Fuels / Thermal Energy

For the purposes of this report, thermal fuels (thermal energy) comprise all solid, liquid and gas fuels used for non-transport purposes. This includes both fossil and renewable fuels used in boilers, space & process heating systems, catering, fuel based electricity generators (on site), CHP and in all plant, equipment & other non-road-mobile vehicles.

TPER

Total Primary Energy Requirement (TPER), or primary energy, is a measure of all of the energy consumed by the organisation, which accounts for the energy that is consumed and/or lost in transformation, transmission and distribution processes. TPER is calculated by applying published conversion factors to each element of the organisation's energy consumption. The conversion factors can vary from year to year and the factor for electricity is typically at least twice the value of those for thermal and transport fuel types.

Conversion factors for each year are available on the SEAI website.

Transport Fuel

For the purposes of this report, transport fuels comprise all liquid fuels used for transport vehicles (road, rail, air, water). This includes both fossil and renewable fuels. The electricity used for transport (rail, electric vehicles) is included within the electricity totals in this report, although an electricity-for-transport subtotal is broken out in Figure 8.



Sustainable Energy Authority of Ireland

Wilton Park House
Wilton Place
Dublin 2
Ireland

t	+353 1 808 2100		e	info@seai.ie
f	+353 1 808 2002		w	www.seai.ie



The Sustainable Energy Authority of Ireland is partly financed by Ireland's EU Structural Funds Programme co-funded by the Irish Government and the European Union