

ENERGY IN IRELAND 2016 HIGHLIGHTS

Based on the 2017 report of national energy statistics produced by SEAI

ENERGY USE



+3.7%

OVERALL ENERGY USE



+5.1%

ECONOMY



+3.6%

ENERGY-RELATED CO₂ EMISSIONS



+7%

ELECTRICITY GENERATION



+3%

INDUSTRY



+3.4%

TRANSPORT



+1.2%

RESIDENTIAL



+5%

SERVICES

INDIGENOUS ENERGY PRODUCTION

4,246 ktoe

(highest level ever recorded)



20%
RENEWABLE ENERGY



Natural gas production also reached the highest level ever, as a result of the Corrib gas field coming on stream.

ENERGY IMPORT DEPENDENCY

88%
IN 2015

69%
IN 2016

ENERGY IMPORT BILL

€4.6bn
IN 2015

€3.4bn
IN 2016

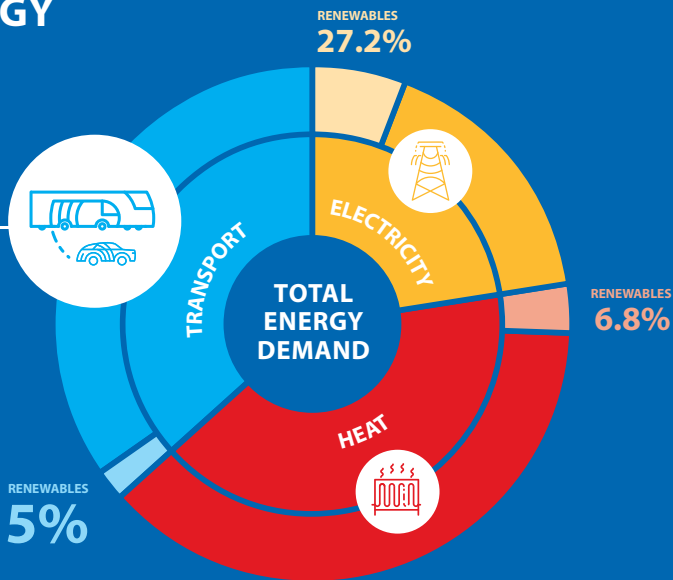
RENEWABLE ENERGY

TRANSPORT TRENDS

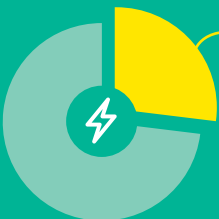
Demand **+3.4%**

Emissions **+3.9%**

Share of renewables down to **5%**



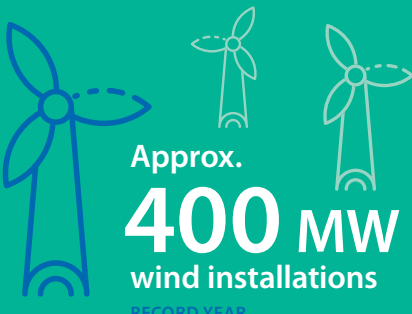
RENEWABLE ELECTRICITY



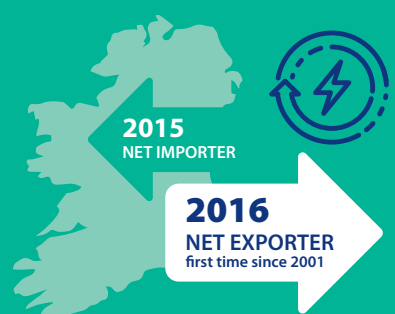
27.2%
Renewable electricity

-3.1Mt
REDUCED CO₂ EMISSIONS

AVOIDED €192m
IN FOSSIL FUEL IMPORTS



Approx. **400 MW** wind installations
RECORD YEAR



2015 NET IMPORTER

2016
NET EXPORTER
first time since 2001

To see the full Energy in Ireland report, visit www.seai.ie