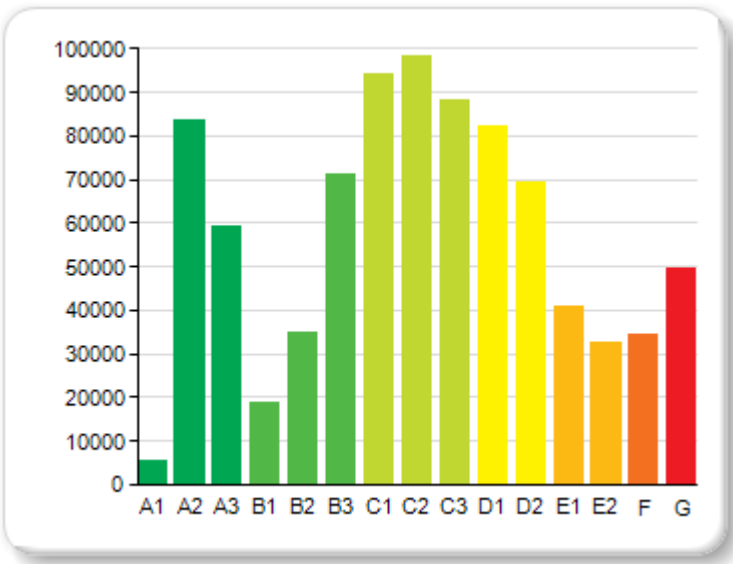
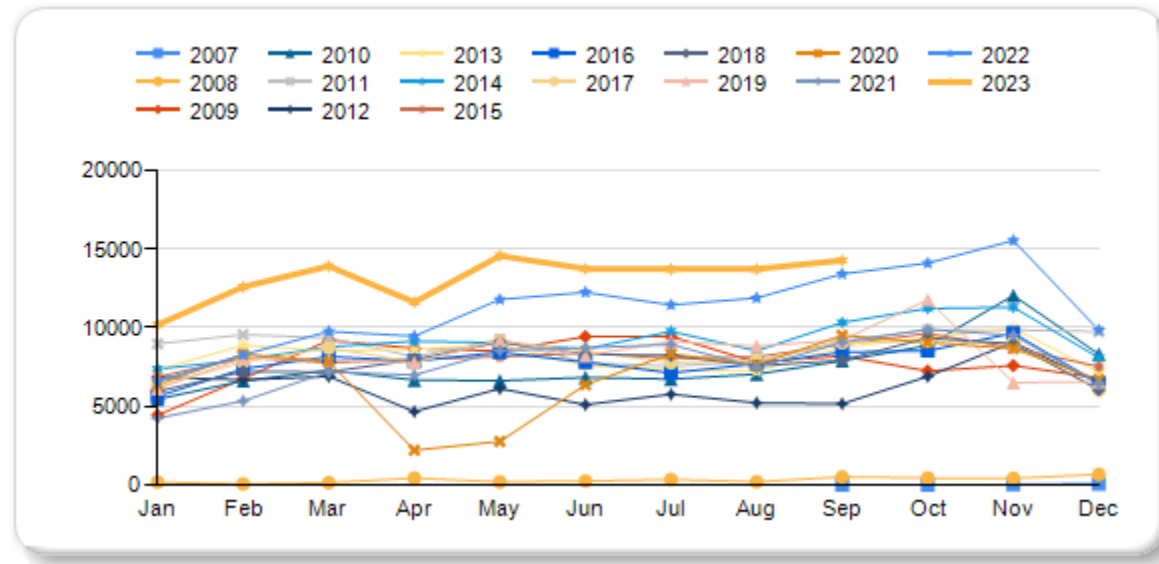


## DOMESTIC BERs BY GRADE (On Public Register and Not Expired - Current)

Energy Rating	Quantity
A1	5,408
A2	83,484
A3	59,231
B1	18,998
B2	34,701
B3	71,308
C1	94,330
C2	98,513
C3	88,233
D1	82,087
D2	69,358
E1	41,082
E2	32,565
F	34,243
G	49,457
<b>Total</b>	<b>862,998</b>

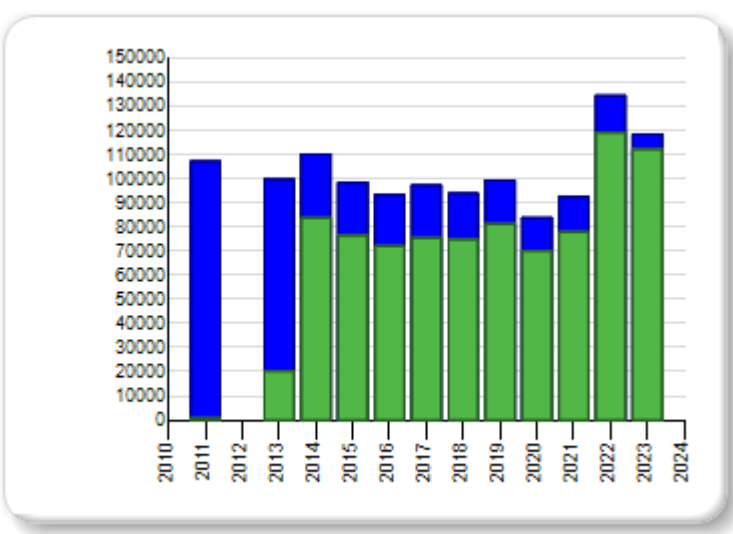


## DOMESTIC BERs MONTHLY YEAR ON YEAR HISTORY (Published)



## DOMESTIC BERs BY YEAR (On Public Register & Not Expired - Current vs Published - History)

Year	Public Reg	Published
2023	112,241	118,392
2022	119,011	134,411
2021	77,868	92,350
2020	70,047	83,807
2019	81,316	99,353
2018	74,738	93,821
2017	75,366	97,263
2016	72,044	93,191
2015	76,442	98,294
2014	83,699	110,173
2013	20,225	99,715
2011	1	107,141
<b>Total</b>	<b>862,998</b>	<b>1,227,911</b>



Year	Jan	Feb	Mar	Apr	May	Jun	Jul	Aug	Sep	Oct	Nov	Dec	Total
2007	0	0	0	0	0	0	0	0	10	16	23	78	127
2008	174	60	140	431	186	248	339	197	504	437	415	663	3,794
2009	4,439	6,750	9,197	8,681	8,513	9,434	9,446	7,796	8,197	7,249	7,589	6,792	94,083
2010	5,455	6,621	7,276	6,672	6,627	6,833	6,730	7,043	7,890	8,863	12,054	8,316	90,380
2011	8,973	9,557	9,353	8,157	9,267	7,771	7,558	7,854	9,168	9,871	9,853	9,759	107,141
2012	6,861	6,685	6,896	4,667	6,128	5,104	5,763	5,220	5,164	6,895	9,074	6,494	74,951
2013	7,309	8,888	8,517	8,631	8,931	7,579	7,347	7,216	8,770	9,378	9,971	7,178	99,715
2014	7,374	7,955	8,777	9,143	9,038	8,640	9,762	8,531	10,331	11,225	11,306	8,091	110,173
2015	6,864	8,105	7,770	8,003	8,144	8,406	8,051	8,136	8,943	9,633	8,716	7,523	98,294
2016	5,630	7,383	8,160	7,873	8,434	7,809	7,120	7,700	8,443	8,529	9,651	6,459	93,191
2017	6,289	7,803	8,712	7,811	9,166	8,504	7,772	7,940	9,037	9,148	9,037	6,044	97,263
2018	5,942	7,209	7,180	7,965	9,095	8,299	8,242	7,569	7,922	9,349	8,985	6,064	93,821
2019	6,124	8,072	7,924	7,800	9,204	8,221	9,128	8,826	9,208	11,783	6,503	6,560	99,353
2020	6,396	8,317	7,844	2,208	2,762	6,369	8,342	7,628	9,520	9,058	8,673	6,690	83,807
2021	4,242	5,345	7,189	6,989	8,540	8,721	8,928	7,478	9,065	9,896	9,527	6,430	92,350
2022	6,603	8,272	9,762	9,466	11,795	12,250	11,448	11,893	13,423	14,105	15,549	9,845	134,411
2023	10,188	12,600	13,918	11,625	14,572	13,752	13,722	13,733	14,282	0	0	0	118,392
<b>Total</b>	<b>98,863</b>	<b>119,622</b>	<b>128,615</b>	<b>116,122</b>	<b>130,402</b>	<b>127,940</b>	<b>129,698</b>	<b>124,760</b>	<b>139,877</b>	<b>135,435</b>	<b>136,926</b>	<b>102,986</b>	<b>1,491,246</b>