

REDUCE YOUR USE

Inland Fisheries Ireland

As one of our country's core environmental agencies, Inland Fisheries Ireland is committed to leading by example in Climate Action. This requires improved energy efficiency and organisational sustainability through a continuous programme focusing on governance, technology and people.

Inland Fisheries Ireland maintains strong momentum in its 'decarbonisation strategy' but significant work remains to be done. There is a particular onus on IFI to take a strong and ambitious leadership role in this area given the inextricable relationship between climate breakdown and the biodiversity crisis.

The agency remains focused on a path to achieving 2030 targets and net-zero emissions at latest by 2050. An important factor in this is IFI people and enhancing environmentally sustainable behaviour. The Reduce Your Use initiative contributed to this, helping to drive behavioural change by adopting a range of simple measures to lower energy consumption. Overall achievements are promoted through appealing infographics and other means.



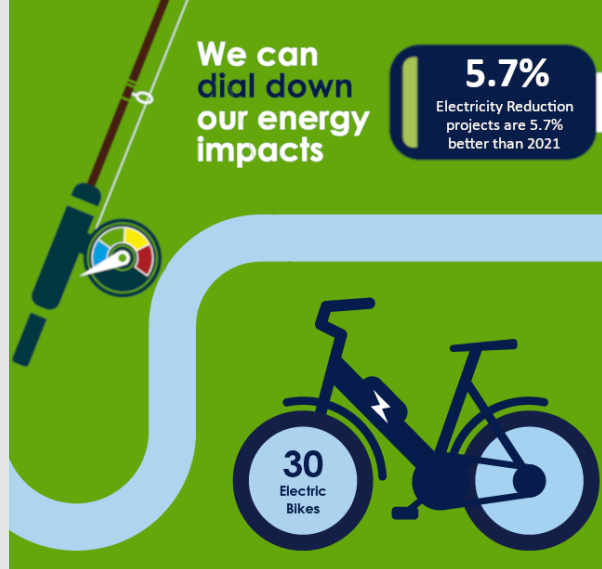
6% energy savings
(Winter months 2022-23)



68 buildings



Iascach Iníre Éireann
Inland Fisheries Ireland



Heating and lighting measures



- Turned off heating and utilities outside of operating hours in all buildings.
- Set internal space heating temperature to 19 deg. C in a most buildings.
- Shut down heat in most office buildings at least 1-2 hours before buildings close.
- Optimised water heating to save energy, in most buildings.



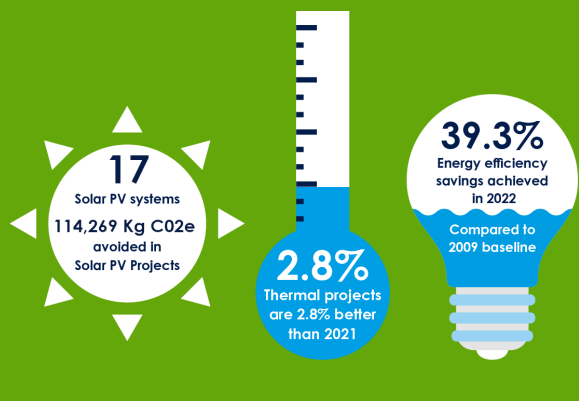
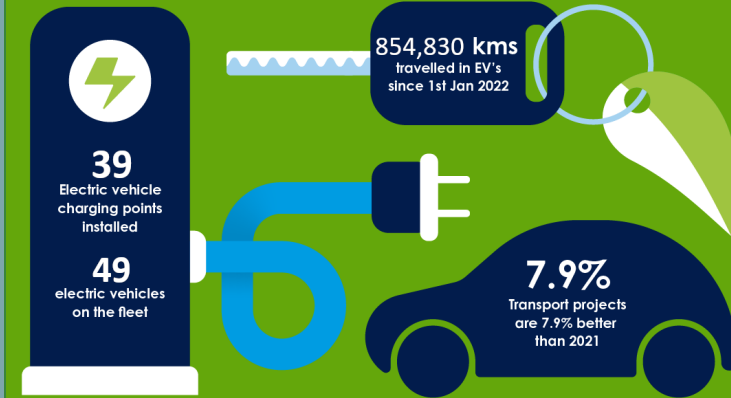
- Reduced unnecessary use of lighting in most buildings.

Appealing infographics help promote IFI's energy & carbon achievements

Control, scheduling and behaviour



- Minimised the space occupied and heated in accordance with a reduction in occupancy.
- Ensured that operational control is appropriate to hours of work and services delivered.
- Challenged the core and extended hours of building use.
- Reduced electricity use at peak times (5 pm-7pm).
- Highest energy usage building closed Friday to Monday.
- Heating shut-down in HQ building on Fri. to Mon. (inclusive).
- Green Teams are driving innovation and positive change and fulfilling a growing role as per PS Climate Action Strategy.
- Developing longer-term staff engagement strategy on energy.



Facilities assessments & monitoring measures

Implemented the following measures in key buildings:

- Carried out energy efficiency assessment/audits.
- Conducted Out-of-Hours Walk-throughs.
- Operations and Maintenance Audit carried out.
- Operational control and measurement process developed.
- Implemented Greenhouse Gas Reduction Tracker software and monitors in buildings, allowing identification of energy 'blackspots' in real-time.