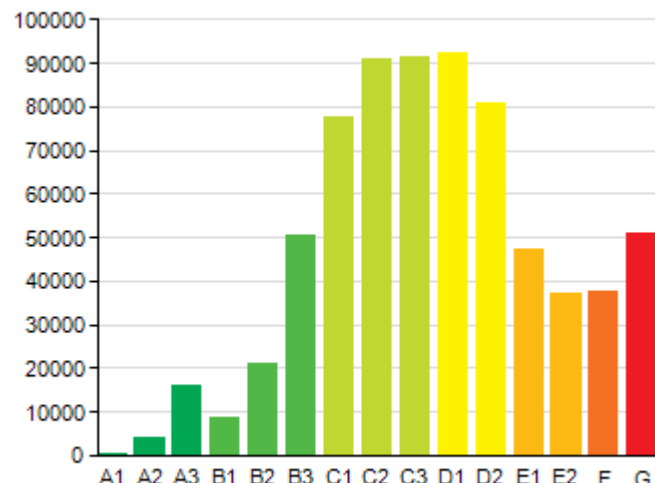
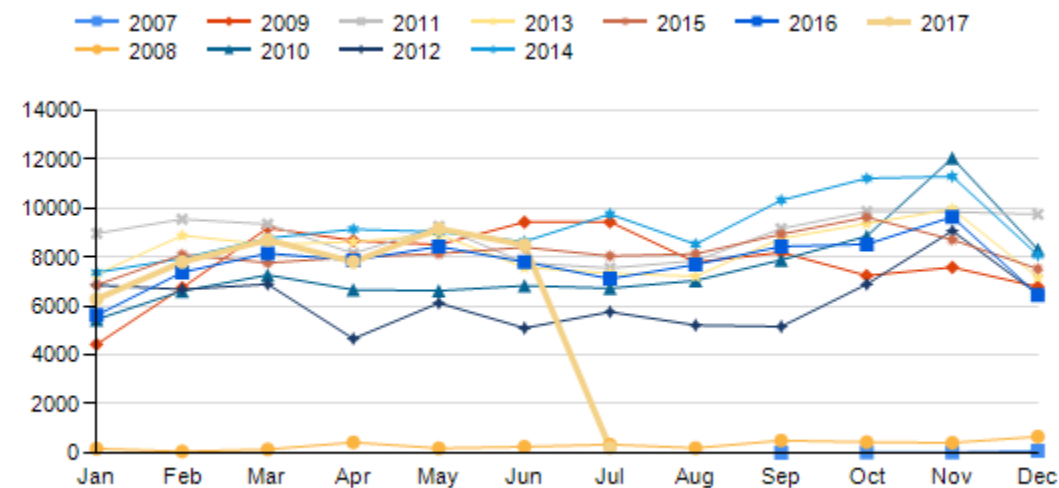


DOMESTIC BERs BY GRADE (On Public Register and Not Expired - Current)

Energy Rating	Quantity
A1	48
A2	4,269
A3	15,897
B1	8,732
B2	21,006
B3	50,456
C1	77,722
C2	90,871
C3	91,436
D1	92,473
D2	80,897
E1	47,354
E2	37,299
F	37,651
G	51,200
Total	707,311

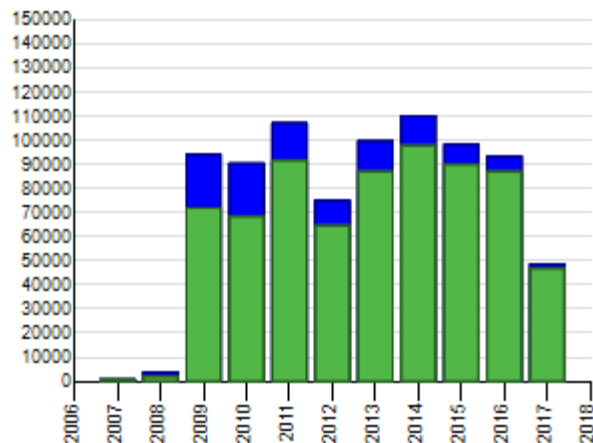


DOMESTIC BERs MONTHLY YEAR ON YEAR HISTORY (Published)



DOMESTIC BERs BY YEAR (On Public Register & Not Expired - Current vs Published - History)

Year	Public Reg	Published
2017	46,927	48,492
2016	87,007	93,191
2015	89,877	98,294
2014	97,877	110,173
2013	87,032	99,715
2012	64,588	74,951
2011	91,529	107,141
2010	68,457	90,380
2009	71,993	94,083
2008	1,999	3,794
2007	25	127
Total	707,311	820,341



Year	Jan	Feb	Mar	Apr	May	Jun	Jul	Aug	Sep	Oct	Nov	Dec	Total
2007	0	0	0	0	0	0	0	0	10	16	23	78	127
2008	174	60	140	431	186	248	339	197	504	437	415	663	3,794
2009	4,439	6,750	9,197	8,681	8,513	9,434	9,446	7,796	8,197	7,249	7,589	6,792	94,083
2010	5,455	6,621	7,276	6,672	6,627	6,833	6,730	7,043	7,890	8,863	12,054	8,316	90,380
2011	8,973	9,557	9,353	8,157	9,267	7,771	7,558	7,854	9,168	9,871	9,853	9,759	107,141
2012	6,861	6,685	6,896	4,667	6,128	5,104	5,763	5,220	5,164	6,895	9,074	6,494	74,951
2013	7,309	8,888	8,517	8,631	8,931	7,579	7,347	7,216	8,770	9,378	9,971	7,178	99,715
2014	7,374	7,955	8,777	9,143	9,038	8,640	9,762	8,531	10,331	11,225	11,306	8,091	110,173
2015	6,864	8,105	7,770	8,003	8,144	8,406	8,051	8,136	8,943	9,633	8,716	7,523	98,294
2016	5,630	7,383	8,160	7,873	8,434	7,809	7,120	7,700	8,443	8,529	9,651	6,459	93,191
2017	6,289	7,803	8,712	7,811	9,166	8,504	207	0	0	0	0	0	48,492
Total	59,368	69,807	74,798	70,069	74,434	70,328	62,323	59,693	67,420	72,096	78,652	61,353	820,341