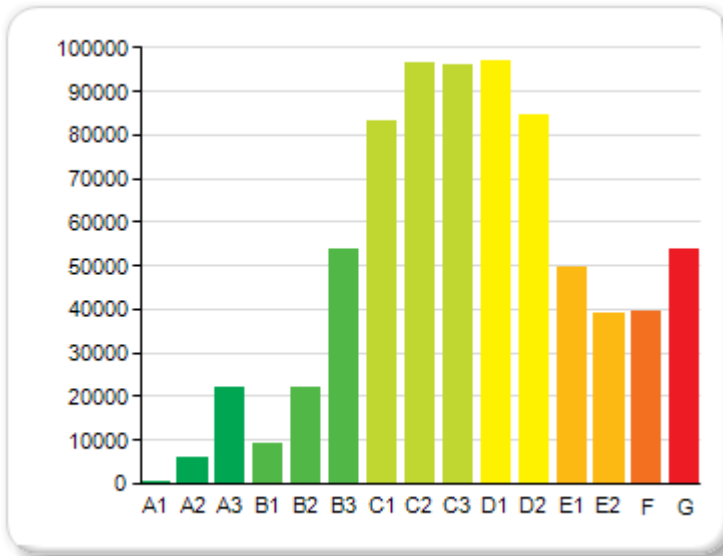
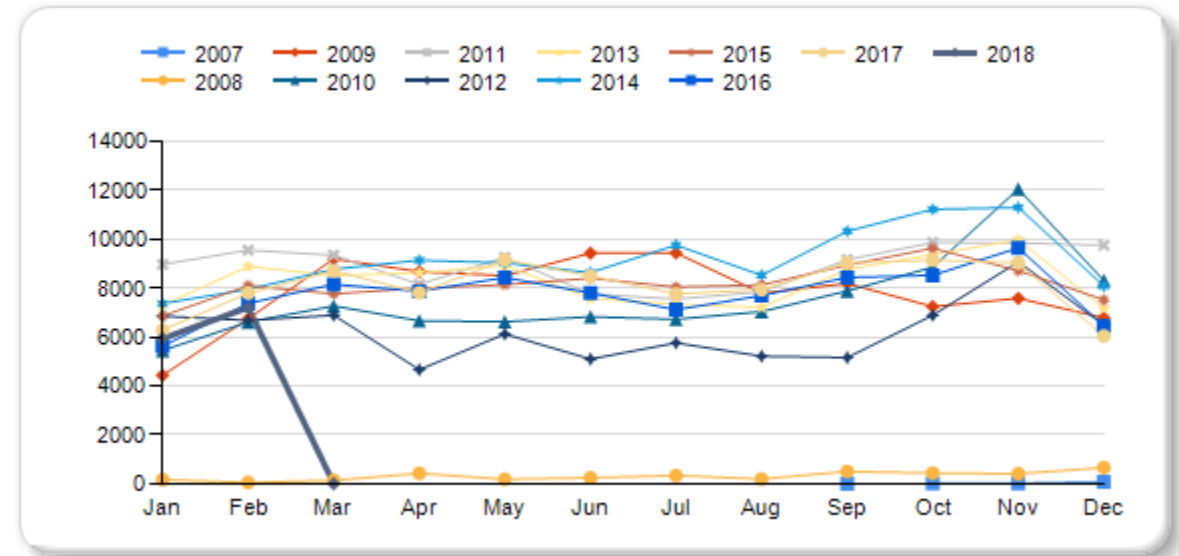


DOMESTIC BERs BY GRADE (On Public Register and Not Expired - Current)

Energy Rating	Quantity
A1	55
A2	6,142
A3	21,949
B1	9,291
B2	22,194
B3	53,707
C1	83,118
C2	96,710
C3	96,304
D1	96,993
D2	84,583
E1	49,405
E2	38,978
F	39,437
G	53,904
Total	752,770

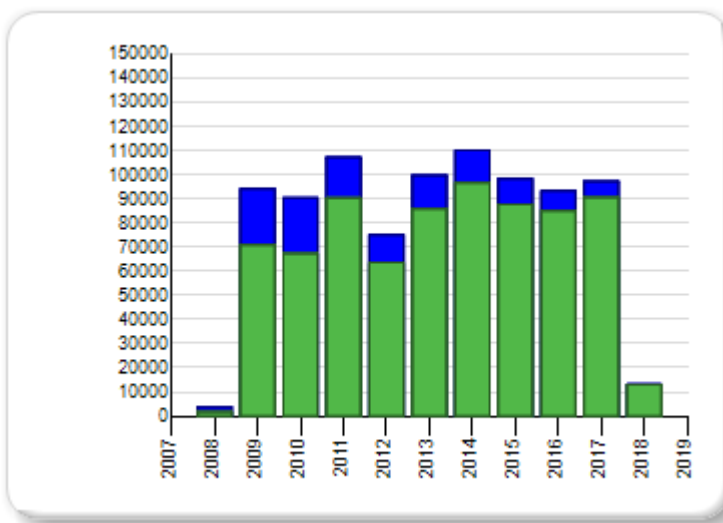


DOMESTIC BERs MONTHLY YEAR ON YEAR HISTORY (Published)



DOMESTIC BERs BY YEAR (On Public Register & Not Expired - Current vs Published - History)

Year	Public Reg	Published
2018	12,968	13,159
2017	90,587	97,263
2016	85,045	93,191
2015	87,730	98,294
2014	96,633	110,173
2013	85,836	99,715
2012	63,666	74,951
2011	90,293	107,141
2010	67,389	90,380
2009	70,808	94,083
2008	1,815	3,794
Total	752,770	882,144



Year	Jan	Feb	Mar	Apr	May	Jun	Jul	Aug	Sep	Oct	Nov	Dec	Total
2007	0	0	0	0	0	0	0	0	10	16	23	78	127
2008	174	60	140	431	186	248	339	197	504	437	415	663	3,794
2009	4,439	6,750	9,197	8,681	8,513	9,434	9,446	7,796	8,197	7,249	7,589	6,792	94,083
2010	5,455	6,621	7,276	6,672	6,627	6,833	6,730	7,043	7,890	8,863	12,054	8,316	90,380
2011	8,973	9,557	9,353	8,157	9,267	7,771	7,558	7,854	9,168	9,871	9,853	9,759	107,141
2012	6,861	6,685	6,896	4,667	6,128	5,104	5,763	5,220	5,164	6,895	9,074	6,494	74,951
2013	7,309	8,888	8,517	8,631	8,931	7,579	7,347	7,216	8,770	9,378	9,971	7,178	99,715
2014	7,374	7,955	8,777	9,143	9,038	8,640	9,762	8,531	10,331	11,225	11,306	8,091	110,173
2015	6,864	8,105	7,770	8,003	8,144	8,406	8,051	8,136	8,943	9,633	8,716	7,523	98,294
2016	5,630	7,383	8,160	7,873	8,434	7,809	7,120	7,700	8,443	8,529	9,651	6,459	93,191
2017	6,289	7,803	8,712	7,811	9,166	8,504	7,772	7,940	9,037	9,148	9,037	6,044	97,263
2018	5,942	7,209	8	0	0	0	0	0	0	0	0	0	13,159
Total	65,310	77,016	74,806	70,069	74,434	70,328	69,888	67,633	76,457	81,244	87,689	67,397	882,271