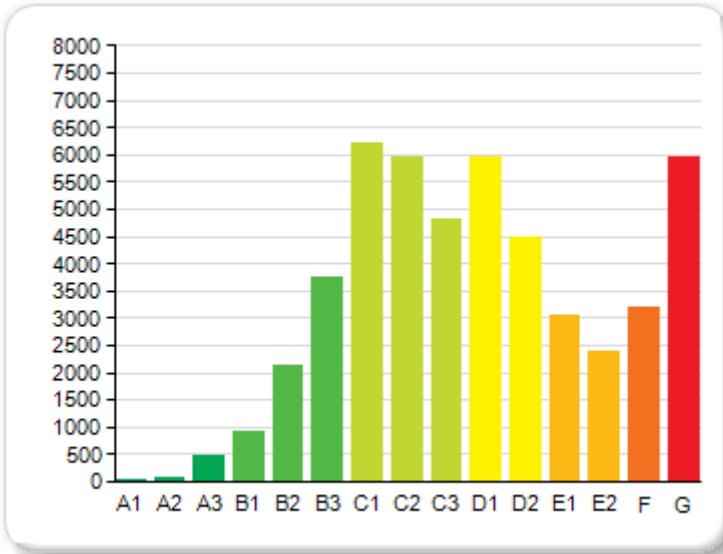
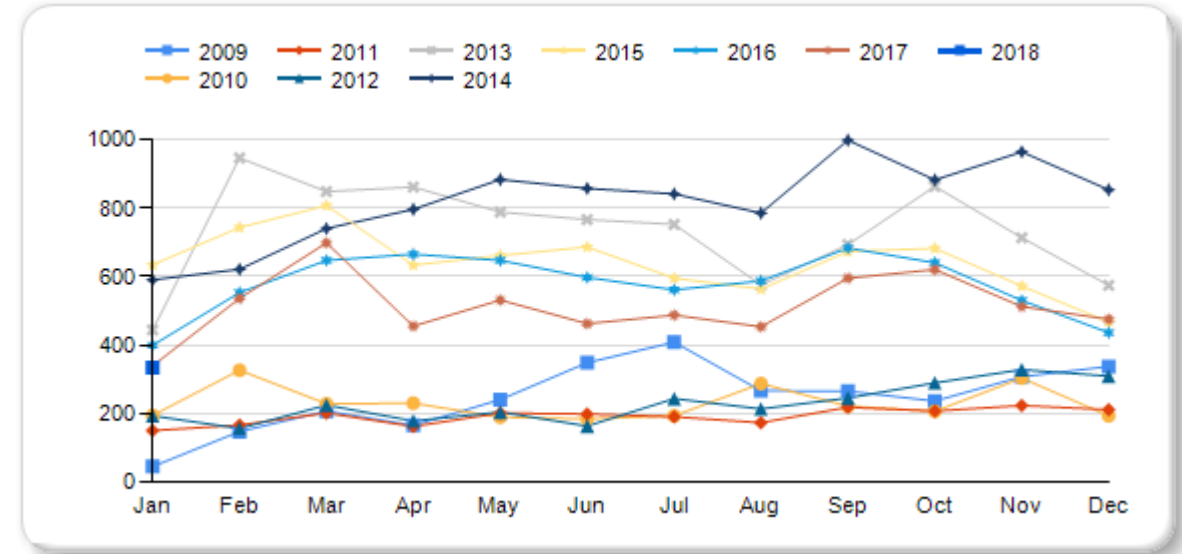


NON-DOMESTIC BERs BY GRADE (On Public Register and Not Expired - Current)

Energy Rating	Quantity
A1	5
A2	55
A3	459
B1	903
B2	2,125
B3	3,763
C1	6,227
C2	5,968
C3	4,813
D1	5,956
D2	4,488
E1	3,036
E2	2,388
F	3,191
G	5,951
Total	49,328

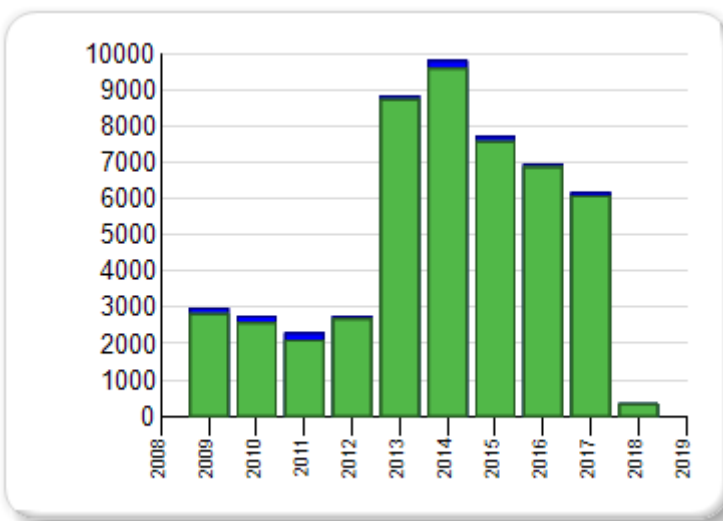


NON-DOMESTIC BERs MONTHLY YEAR ON YEAR HISTORY (Published)



NON-DOMESTIC BERs BY YEAR (On Public Register & Not Expired - Current vs Published - History)

Year	Public Reg	Published
2018	331	334
2017	6,066	6,163
2016	6,875	6,945
2015	7,572	7,716
2014	9,595	9,810
2013	8,731	8,823
2012	2,675	2,745
2011	2,092	2,300
2010	2,572	2,754
2009	2,819	2,971
Total	49,328	50,561



Year	Jan	Feb	Mar	Apr	May	Jun	Jul	Aug	Sep	Oct	Nov	Dec	Total
2009	45	147	207	165	240	348	408	266	265	236	307	337	2,971
2010	194	326	228	230	189	184	193	287	221	206	303	193	2,754
2011	150	166	201	162	201	198	190	173	218	207	223	211	2,300
2012	193	156	224	178	204	163	243	213	245	289	328	309	2,745
2013	444	946	848	861	788	766	752	575	693	863	713	574	8,823
2014	590	621	740	796	883	857	841	785	998	882	964	853	9,810
2015	634	743	807	633	661	686	595	563	673	682	572	467	7,716
2016	399	553	647	665	647	597	561	587	683	640	530	436	6,945
2017	339	536	698	455	531	462	487	453	595	620	512	475	6,163
2018	334	0	0	0	0	0	0	0	0	0	0	0	334
Total	3,322	4,194	4,600	4,145	4,344	4,261	4,270	3,902	4,591	4,625	4,452	3,855	50,561