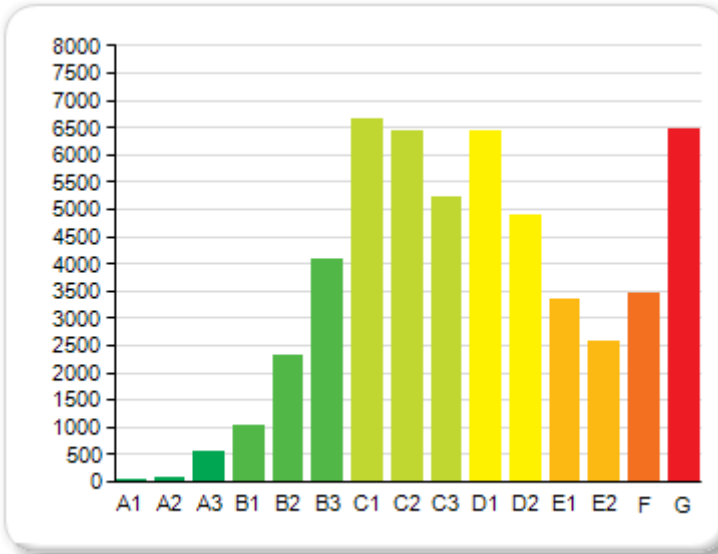
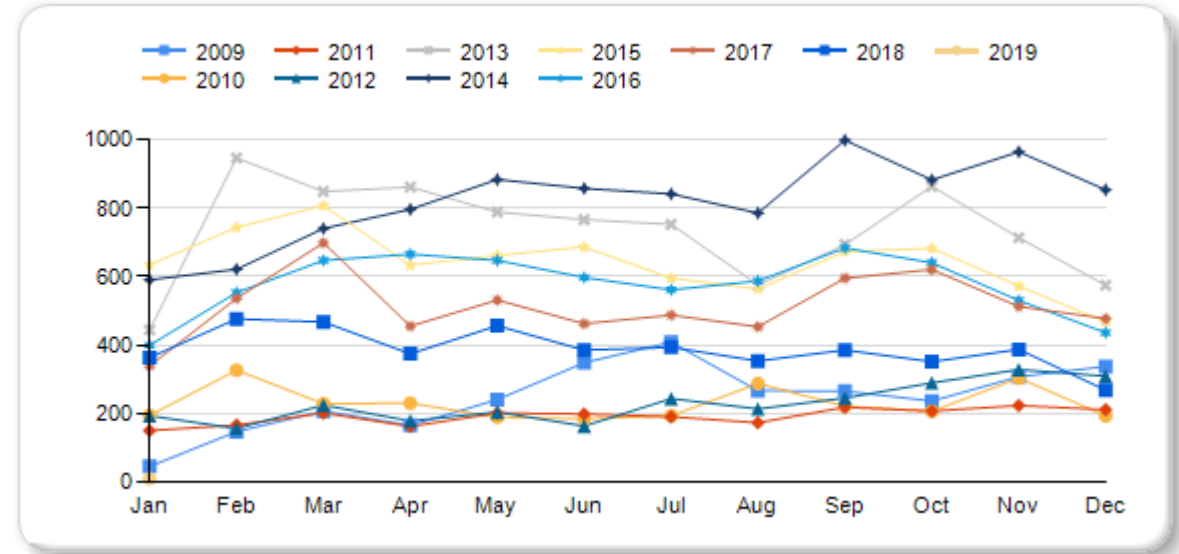


## NON-DOMESTIC BERs BY GRADE (On Public Register and Not Expired - Current)

Energy Rating	Quantity
A1	11
A2	72
A3	545
B1	1,009
B2	2,331
B3	4,075
C1	6,669
C2	6,446
C3	5,230
D1	6,438
D2	4,893
E1	3,338
E2	2,589
F	3,468
G	6,454
<b>Total</b>	<b>53,568</b>

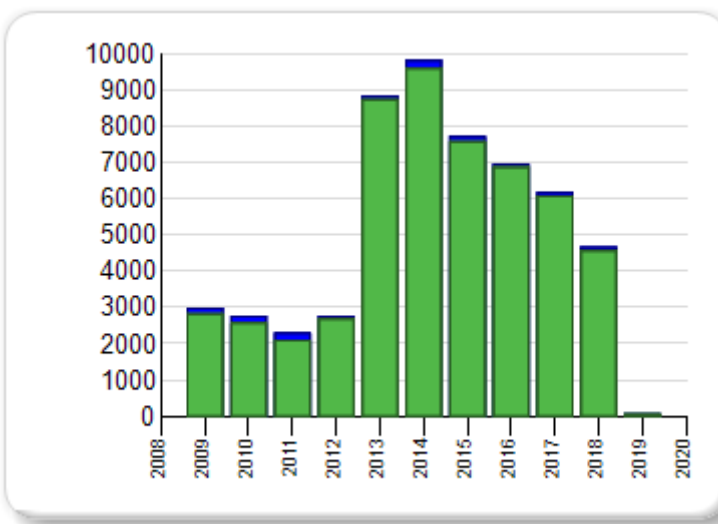


## NON-DOMESTIC BERs MONTHLY YEAR ON YEAR HISTORY (Published)



## NON-DOMESTIC BERs BY YEAR (On Public Register & Not Expired - Current vs Published - History)

Year	Public Reg	Published
2019	8	9
2018	4,562	4,658
2017	6,067	6,165
2016	6,875	6,945
2015	7,572	7,716
2014	9,595	9,810
2013	8,731	8,823
2012	2,675	2,745
2011	2,092	2,300
2010	2,572	2,754
2009	2,819	2,971
<b>Total</b>	<b>53,568</b>	<b>54,896</b>



Year	Jan	Feb	Mar	Apr	May	Jun	Jul	Aug	Sep	Oct	Nov	Dec	Total
2009	45	147	207	165	240	348	408	266	265	236	307	337	2,971
2010	194	326	228	230	189	184	193	287	221	206	303	193	2,754
2011	150	166	201	162	201	198	190	173	218	207	223	211	2,300
2012	193	156	224	178	204	163	243	213	245	289	328	309	2,745
2013	444	946	848	861	788	766	752	575	693	863	713	574	8,823
2014	590	621	740	796	883	857	841	785	998	882	964	853	9,810
2015	634	743	807	633	661	686	595	563	673	682	572	467	7,716
2016	399	553	647	665	647	597	561	587	683	640	530	436	6,945
2017	339	536	698	455	531	462	487	453	595	620	512	477	6,165
2018	363	476	467	374	456	385	393	353	385	351	387	268	4,658
2019	9	0	0	0	0	0	0	0	0	0	0	0	9
<b>Total</b>	<b>3,360</b>	<b>4,670</b>	<b>5,067</b>	<b>4,519</b>	<b>4,800</b>	<b>4,646</b>	<b>4,663</b>	<b>4,255</b>	<b>4,976</b>	<b>4,976</b>	<b>4,839</b>	<b>4,125</b>	<b>54,896</b>