

Business Energy Upgrades Scheme

Contractor Info Form –Fabric Wall

Introduction

This form has been compiled to assist you as the Nominated Company/Contractor to ensure you are aware, have the ability and agree to comply with the minimum requirements of the Business Energy Upgrades Scheme for the above measure.

Minimum requirements

The minimum requirements of the scheme are also outlined. Ensure you are satisfied you and your associated installer can commit to all requirements prior to accepting your nomination. Failure to achieve any of these requirements will cause a cancellation of your clients grant offer.

Installer requirements

Min. Qualifications

NSAI or equivalent registration ID

Associated current material manufacturer training

Technical requirements

All components and works in line with current EN standards.

Agreement Certification (as required)

CE Certification

Minimum efficiency standards of scheme (see associated details)

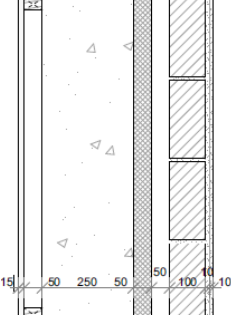
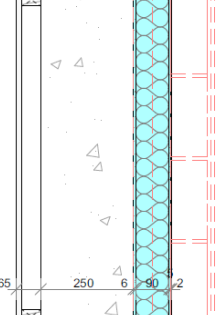
Due to complexity of fire strategies in non-residential buildings, only non-combustible solutions permitted

Standard Details

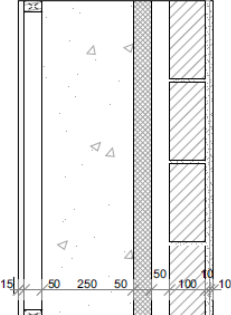
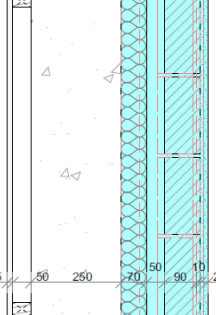
The details below outline the assumed interventions on which the grant values for each option are based. Where the level of intervention differs from that outlined the grant value will be reduced accordingly to reflect same.

Hollow Core Cavity Block (External Render)	
Existing	New
<p>Insulation: Generic EPS</p>	<p>Removal of external brickwork skin and existing combustible insulation. Allows install of non-combustible insulation and effective implementation of fire barriers as per TGD B. U – Value Achieved Min. 0.33W/m²K</p>
Hollow Core Cavity Block (Cavity Fill)	
Existing	New
<p>Insulation: Generic EPS</p>	<p>Removal of external skin and existing combustible insulation. Allows install of non-combustible insulation and effective implementation of fire barriers as per TGD B. External facade to be rebuilt using brick salvaged from demo. U – Value Achieved Min. 0.35W/m²K</p>

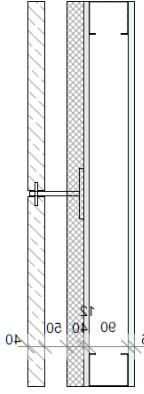
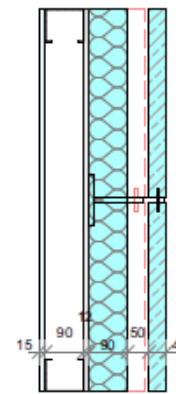
Reinforced Cavity Wall (External Render)

Existing	New
	
<p>Insulation: Generic EPS</p>	<p>Removal of external brickwork skin and existing combustible insulation. Allows install of non-combustible insulation and effective implementation of fire barriers as per TGD B. U – Value Achieved Min. 0.34W/m²K</p>

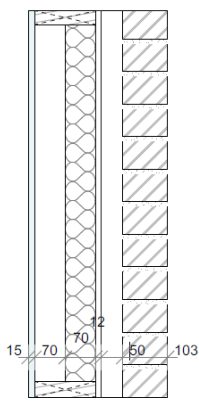
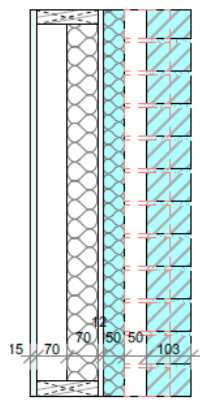
Hollow Core Cavity Block (Cavity Fill)

Existing	New
	
<p>Insulation: Generic EPS</p>	<p>Removal of external skin and existing combustible insulation. Allows install of non-combustible insulation and effective implementation of fire barriers as per TGD B. External facade to be rebuilt using brick salvaged from demo. U – Value Achieved Min. 0.34W/m²K</p>

Metal Stud with Rainscreen Facade

Existing	New
	
<p>Insulation: PIR</p>	<p>Removal of external cladding and existing combustible insulation. Allows install of non-combustible insulation and effective implementation of fire barriers as per TGD B.</p> <p>External facade to be rebuilt using cladding salvaged from demo, if in good condition, or new cladding to match existing.</p> <p>U – Value Achieved Min. 0.32W/m²K</p>

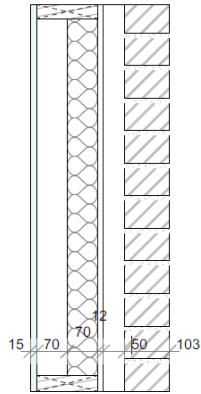
Timber Frame Wall (Cavity Fill)

Existing	New
	
<p>Insulation: PIR</p>	<p>Removal of external skin. Allows install of non-combustible insulation and effective implementation of fire barriers as per TGD B.</p>

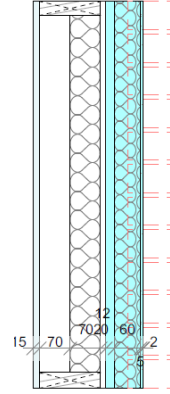
External facade to be rebuilt using brick salvaged from demo. U -Value Achieved
 U – Value Achieved Min. 0.26W/m²K

Timber Frame Wall (External Render)

Existing



New



Insulation: PIR

Removal of external brickwork skin.
 Allows install of non-combustible insulation and effective implementation of fire barriers as per TGD B.
 Note: Drained cavity required when used on timber stud as per BBA certification.
 U – Value Achieved Min. 0.26W/m²K

Payment documentation

All completion documentation must be uploaded by your client for review and sign off prior to release of grant payment.

Failure by you to provide a full and compliant set of all documentation to them in a timely could cause a cancellation of their grant offer.

Documentation

Dimensioned Drawing of installation area and section of build up

Equipment Data Sheets Incl. Certification (Agreement Cert as appropriate)

Declaration of Works (incl. U Value Calcs.)

Invoice of Works (including thickness and square meter coverage of material)

Photographs of the Installation

De-Minimus Declaration (where applicable)

GBER requirements verification (where applicable)

Photographs

Installation Location (Before) - All Spaces/Facades

Installation Location (After) - All Spaces/Facades

New Equipment - Labelling

Staged sections to indicate compliances with standard details

Company & installer registration

We do not require an applicant to select a company from a register. This allows applicants to use their preferred company to complete the works and allows more of the supply chain to participate in the scheme.

However, in order to monitor quality within the supply chain for the scheme we do require that all companies and their associated installers carry out a registration process the first time they are nominated under the scheme. This is a simple process and you do not have to be registered to commence the works but rather before your client makes an application for payment.

Please note as part of the registration you can decide whether you wish to be on the published register of companies and installers or not. If you opt out of this list, you will remain in the application portal in case you want certain clients to select you on future applications. If you decide to remain visible on the register you will be exposed to a strong line of prospects through the scheme.

It is important that prior to commencing the works you and your associated installer download the registration forms for your respective roles and satisfy yourselves you can comply with all Terms and Conditions outlined therein.

Please follow the link below to complete the simple Business Energy Upgrades registration process, if this is your first involvement with the scheme. You can register for a number of measures through in a single application once you possess all the relevant requirements:

<https://www.seai.ie/register-with-seai/>